

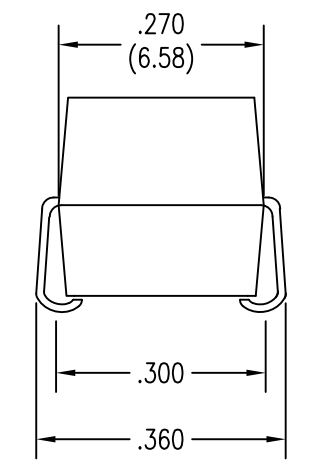
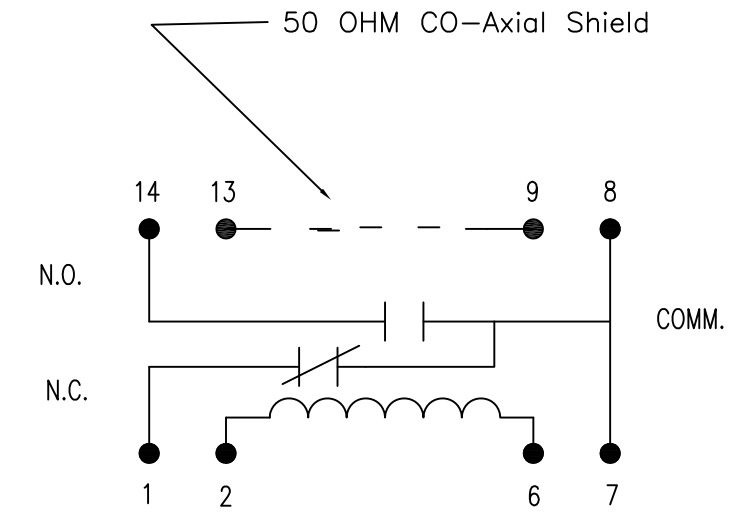
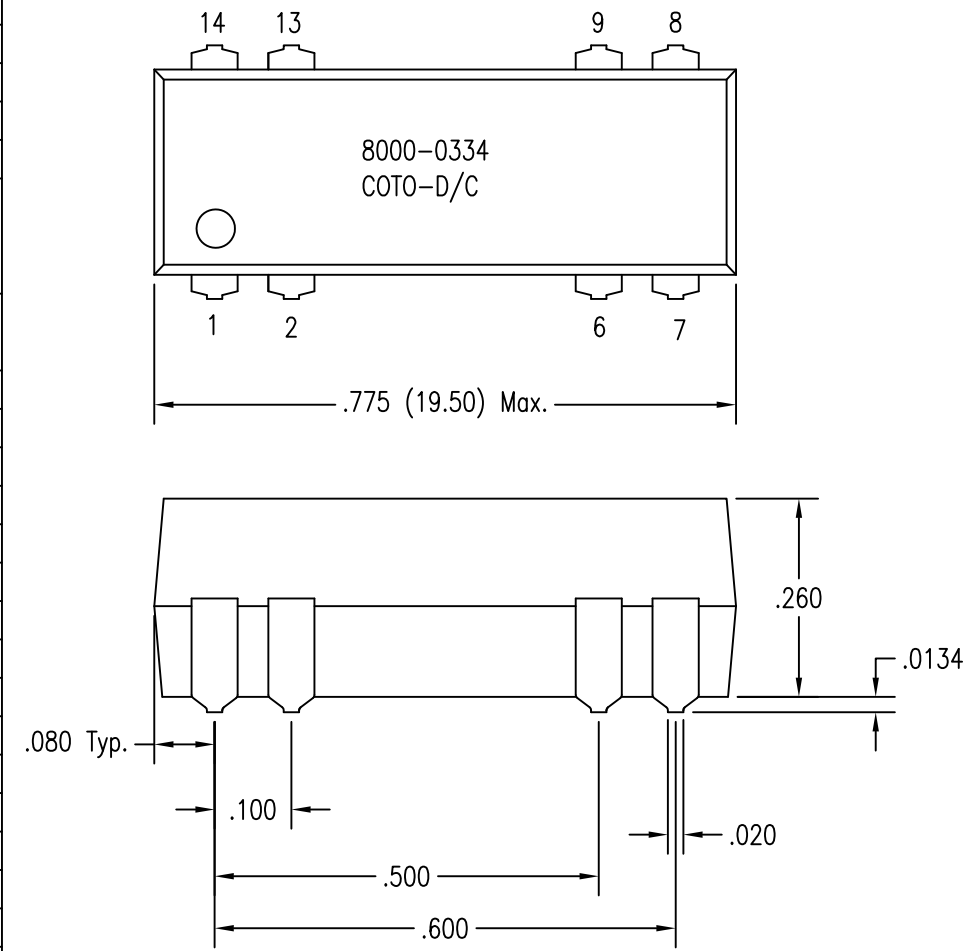
DESCRIPTION: Reed relay, 1 form C dry (SMD), 5.0 vdc, 150 ohm coil with Co-axial Shield.

Relay is designed to operate from -40°C to +125°C

REVISION HISTORY					
ZONE	REV	ECN	DESCRIPTION	DATE	REV BY
XX	A	XX-XXXX	Updated to new format, no other changes	05MAR14	LMC
XX	B	XX-XXXX	Lowered operate & storage temperature to -40°C	25MAR14	LMC

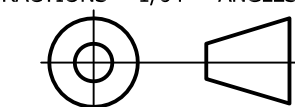
ELECTRICAL

TEST PARAMETERS		TEST CONDITIONS (note 1)	MIN.	NOM.	MAX.	UNITS
COIL RESISTANCE			135	150	165	OHMS
NOMINAL VOLTAGE				5.0		VOLTS
MUST OPERATE		@ 25 deg. C			2.5	VOLTS
MUST RELEASE			0.4			VOLTS
SWITCHING VOLTAGE					150	VOLTS
SWITCHING CURRENT					0.250	AMPS
CARRY CURRENT					1.0	AMPS
CONTACT RATING (SWITCHING)					3.0	WATTS
LIFE EXPECTANCY	SIGNAL LOAD	1 VOLT 10 mAMPS		100E6		OPERATIONS
	MEDIUM LOAD	CONTACT FACTORY		N/A		OPERATIONS
	HIGH LOAD	CONTACT FACTORY		N/A		OPERATIONS
STATIC CONTACT RESISTANCE		0.050 VOLTS , 10 Ma 50 mSec AFTER COIL ENERG.			0.150	OHMS
DYNAMIC CONTACT RESISTANCE		0.50 VOLTS , 50 Ma 100 Hz 1.5 mSec.			0.200	OHMS
INSULATION RESISTANCE	ACROSS OPEN CONTACTS	AT 100 VDC	10E11			OHMS
	CONTACT TO COIL		10E11			OHMS
	COIL TO SHIELD		10E11			OHMS
	CONNTACT TO SHIELD		10E11			OHMS
CAPACITANCE	CONTACT GAP			2.0	pF	
CAPACITANCE	CONTACTS TO COIL			1.0	pF	
CAPACITANCE					pF	
DIELECTRIC STRENGTH	CONTACT GAP	DC/ PEAK AC	200			VOLTS
	CONTACT TO COIL	DC/ PEAK AC	1500			VOLTS
						VOLTS
OPERATE TIME (INCLUDING BOUNCE)		AT NOMINAL VOLTAGE 30 Hz SQUARE WAVE		1.0		mSEC
RELEASE TIME (UNSUPPRESSED)				2.0		mSEC
ENVIRONMENTAL						
STORAGE TEMPERATURE			-40		+125	° C
OPERATING TEMPERATURE			-40		+125	° C



NOTES:

- All parameters specified per EIA/NARM standards for dry reed relays NO RS-421 & RS-436 unless otherwise noted, all parameters specified @ 25 deg. C & 40% R.H.
- Solder process temperature: +260°C maximum, for one minute dwell time. Temperature measured on leads where lead exits molded package.

APPROVALS REQUIRED		UNLESS OTHERWISE SPECIFIED ALL DIMENSIONS ARE IN INCHES XX = ± .010 XXX = ± .005 XXXX = ± .001 FRACTIONS = 1/64 ANGLES = ± 1/2°  THIRD ANGLE PROJECTION DO NOT SCALE THIS DRAWING	66 Whitecap Drive North Kingstown, RI 02852 USA PH:401.943.2686 www.COTORELAY.com	
DRAWN BY LMC	DATE 05MAR14		COTO DWG NAME Reed Relay, SPDT W/ ES Shield	
CHECKED BY	DATE		COTO DWG# 8000-0334	REV B
QA APPROVAL BY	DATE		CUST./SUPL. NAME	CUST./SUPL. DWG#
MFG APPROVAL BY	DATE		SIZE B	SCALE FOR SERIES
ENG APPROVAL BY	DATE	SHEETS 1 OF 1		
MATERIAL	FINISH			