



**NP5-6
NP5-6FR**

*Sealed Rechargeable
Lead-Acid Battery*

6V, 5Ah

Specifications

- **NOMINAL VOLTAGE:** 6V
- **NOMINAL CAPACITY:**

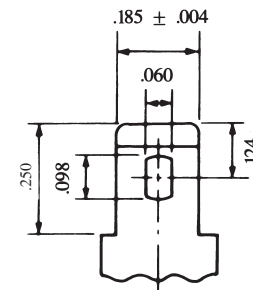
20 hr. rate of .25A to 5.25V	5.0Ah
10 hr. rate of .45A to 5.25V	4.5Ah
5 hr. rate of .80A to 5.10V	4.0Ah
1 hr. rate of 3.0A to 4.80V	3.0Ah
- **WEIGHT (approx.):** 2.05 pounds (0.93 kgs.)
- **ENERGY DENSITY (20 hr. rate):** 1.48 WH/cubic inch (90.1 WH/liter)
- **SPECIFIC ENERGY (20 hr. rate):** 14.6 WH/pound (32.3 WH/kg)
- **INTERNAL RESISTANCE OF CHARGED BATTERY:** 18 milliohms (approx.)
- **MAXIMUM DISCHARGE CURRENT WITH STANDARD TERMINALS:** 50 amperes
- **MAXIMUM SHORT-DURATION DISCHARGE CURRENT:** 150 amperes
- **OPERATING TEMPERATURE RANGE:**

CHARGE	5°F to 122°F
	(-15°C to 50°C)
DISCHARGE	-4°F to 140°F
	(-20°C to 60°C)
- **CHARGE RETENTION (shelf life) at 68°F (20°C):**

1 month	97%
3 months	91%
6 months	85%
- **LIFE EXPECTANCY:**

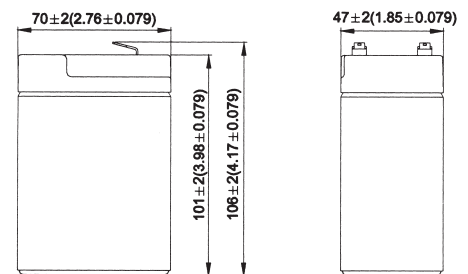
STANDBY USE	3 to 5 years
CYCLE USE (approx.):	
100% depth of discharge	250 cycles
50% depth of discharge	550 cycles
30% depth of discharge	1200 cycles
- **SEALED CONSTRUCTION:** Can be operated, charged or stored in any position without leakage.
- **STANDARD TERMINAL:** Quick Disconnect .187 or Optional .250
- **HOUSING MATERIAL:** ABS Resin
- **OPTIONAL:** Container and cover made from Flame Retardant ABS (UL94-V0/L.O.I.>28%)
- Approved for shipping as non-hazardous, non-spillable

Terminal



INCH = MM	
.250	6.35
.185	4.70
.124	3.15
.098	2.49
.060	1.52
.031	0.79
.020	0.51
.004	0.10

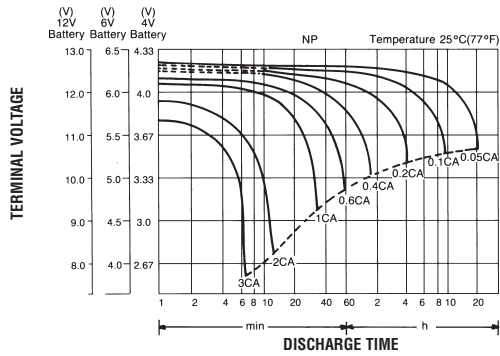
Dimensions



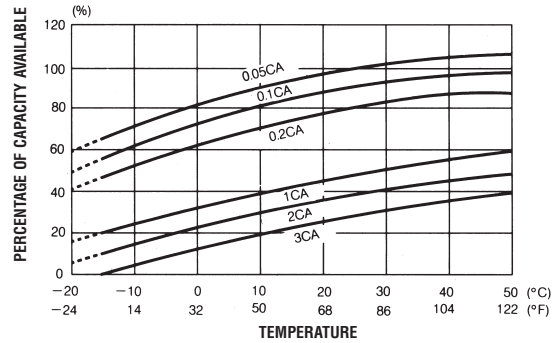
UL listing pending - File No MH16464



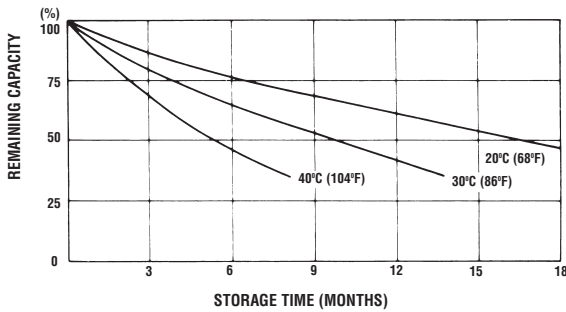
DISCHARGE CHARACTERISTIC CURVES AT 25°C (77°F)



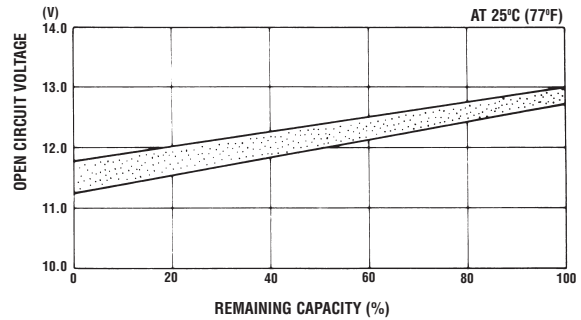
TEMPERATURE EFFECTS IN RELATION TO BATTERY CAPACITY



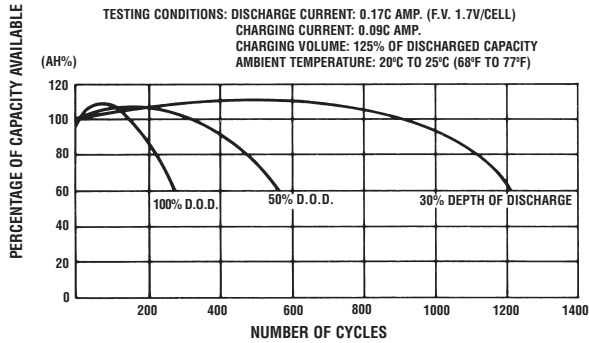
SELF DISCHARGE CHARACTERISTICS



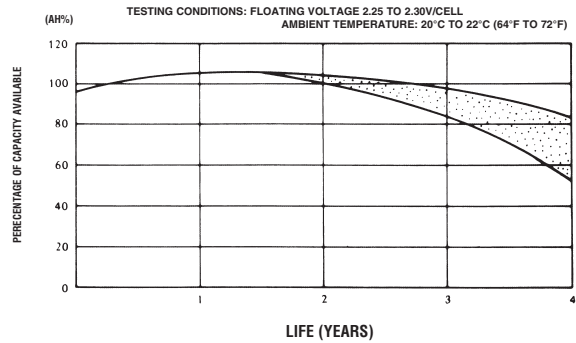
OPEN CIRCUIT VOLTAGE VS REMAINING CAPACITY



CYCLE SERVICE LIFE IN RELATION TO DEPTH OF DISCHARGE



FLOAT SERVICE LIFE



When the battery will be used by current in excess of 3C, consult with EnerSys prior to use.

CHARGING METHODS (At 20°C)

Cycle use: Maximum charging current 1.1A
Charging voltage 7.2 to 7.5V
Standby use: Float charging voltage 6.75 to 6.90V

CAUTION

- Avoid short circuit
- Do not charge in a sealed container.



EnerSys
P.O. Box 14145
Reading, PA 19612-4145
USA
Tel: +1-610-208-1991
+1-800-538-3627

EnerSys EMEA
Brussels, Belgium
Tel: +32 (0)2 247 94 47
EnerSys Asia
Guangdong, China
Tel: +86 755 2689 3639

Represented by:

