

Keysight Technologies

M9380A PXIe CW Source

1 MHz to 3 GHz or 6 GHz

Configuration Guide



Overview

This configuration guide provides instructions to help you configure the M9380A PXIe CW Source and expand the system to meet your requirements. Product upgrades, related products and physical connection schematics are also featured.

For more detailed product and specification information refer to the following literature and web pages:

- M9380A data sheet (literature no. 5991-0283EN)
- M9018A PXIe 18 slot Chassis data sheet (literature no. 5990-6583EN)
- M9036A PXIe Embedded Controller data sheet (literature no. 5990-8465EN)
- M9037A PXIe High Performance Embedded Controller data sheet (literature no. 5991-3661EN)
- M9300A data sheet (literature no. 5991-0898EN)
- M9381A data sheet (literature no. 5991-0279EN)



Figure 1. Keysight Technologies, Inc. M9380A PXIe CW Source (includes M9310A and M9301A), pictured with the M9300A frequency reference and M9036A embedded controller in M9018A 18-slot chassis with Y1212A slot blockers and Y1213A filler panels.

A. Select Options for M9380A PXIe CW Source

Step 1. Start with M9380A base configuration

The M9380A PXIe CW Source (occupies 2 slots) includes:

| | | |
|--------|--------------------|--|
| M9301A | PXIe synthesizer | – Frequency range 1 MHz - 3 GHz |
| M9310A | PXIe source output | – One day startup assistance |
| | | – Modular interconnect cables |
| | | – Software, example programs and product information on CD |
| | | – Return to Keysight warranty – 3 years |

Step 2. Choose a frequency range

| | | | |
|----------------------------------|------------|-------------------------------|--------------------------------|
| <input checked="" type="radio"/> | M9380A-F03 | Frequency range 1 MHz – 3 GHz | Included in base configuration |
| <input type="radio"/> | M9380A-F06 | Frequency range 1 MHz – 6 GHz | |

Step 3. Add high output power (optional)

Minimizes need for external amplification to overcome power loss

| | | | |
|-----------------------|------------|-------------------|--|
| <input type="radio"/> | M9380A-1EA | High output power | Max output power +18 dBm across the frequency range. |
|-----------------------|------------|-------------------|--|

B. Add a M9300A PXIe Frequency Reference

Step 1. Add a PXIe frequency reference (occupies 1 slot)

Required to meet datasheet specifications. It has five 100 MHz outputs which can support up to five CW sources.

| | | | |
|-----------------------|------------|--------------------------------------|---|
| <input type="radio"/> | M9380A-300 | Adds M9300A PXIe Frequency Reference | Five 100 MHz outputs One 10 MHz output Internal 10 MHz OCXO timebase output |
|-----------------------|------------|--------------------------------------|---|

C. Select Controller (either Embedded Controller or via PC)¹

Step 1. If selecting an embedded controller, select either M9036A or M9037A²

- M9036A Mid-Performance Embedded Controller
Intel i5-520E dual-core, 2.4 GHz, 4 thread, 4GB RAM

Select the M9036A for mid-performance, lower cost or, if your application requires XP operating system



- M9037A High-Performance Embedded Controller
Intel i7-4700EQ quad-core processor, 2.4 GHz, 8 thread, 4GB RAM

Select M9037A for the best performance if you have memory intensive applications, multiple applications running in parallel or if a lot of data is sent to the PC from the PXIE chassis. Features removable SSD drive for security and x8 connector from front for connection to second chassis



Step 2. Upgrade from standard memory size (optional)

For M9036A

- M9036A-M08 Memory upgrade from 4 GB to 8 GB RAM

For M9037A

- M9037A-M08 Memory upgrade from 4 GB to 8 GB RAM
- M9037A-M16 Memory upgrade from 4 GB to 16 GB RAM

Step 3. Select an operating system

For M9036A

- M9036A-WE3 Microsoft Windows Embedded Standard 7 (32-bit)
- M9036A-WE6 Microsoft Windows Embedded Standard 7 (32-bit)
- M9036A-WXP Downgrade to Microsoft Windows XP (32-bit)

For M9037A

- M9037A-WE3 Microsoft Windows Embedded Standard 7 (32-bit)
- M9037A-WE6 Microsoft Windows Embedded Standard 7 (32-bit)

- For list of qualified external controllers, please see Test Computer List Technical Note literature no. [5990-7632EN](#). The M9021A is used for both PC controllers and can only be used in the M9018A chassis.
- The M9018A 18-slot chassis includes empty space to the left of the 1st functional slot. The embedded controller occupies that empty space and the 1st functional slot.

To use your laptop PC as a controller

M9045B PCIe ExpressCard Adaptor



Y1200B PCIe Cable



M9021A PCIe Cable Interface³: 1 slot



To use your desktop PC as a controller

M9048A PCIe Desktop Adaptor



Y1202A PCIe Cable



M9021A PCIe Cable Interface³: 1 slot

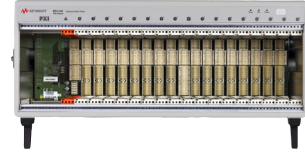


3. The M9021A is used for either PC control option and can only be used with the Keysight M9018A 18-slot chassis.

D. Select a Chassis and Accessories

Step 1. Select a Chassis

- M9018A 18-slot PXIe chassis



Step 2. Choose enough slot blocker kits and EMC filler panels to fill every open slot Recommended to achieve datasheet specifications

- Y1212A Slot blocker kit: 5 slots

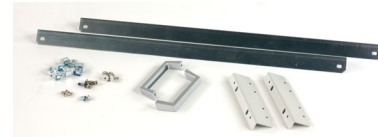


- Y1213A PXI EMC filler panel kit: 5 Slots



Step 3. Choose a rack mount kit (optional)

- Y1215A Rack mount kit for M9018A 18-slot PXIe chassis



Step 4 Choose an air inlet kit¹ (optional)

Recommended for rack mounted systems with less than 1U space below chassis.

- Y1214A Air Inlet kit: M9018A 18-slot chassis¹



1. Available in 1-slot, 2-slot or 3-slot options depending on the chassis configuration. For more information, please visit www.keysight.com/find/m9018a

Physical Connections

Physical connection diagram for controllers

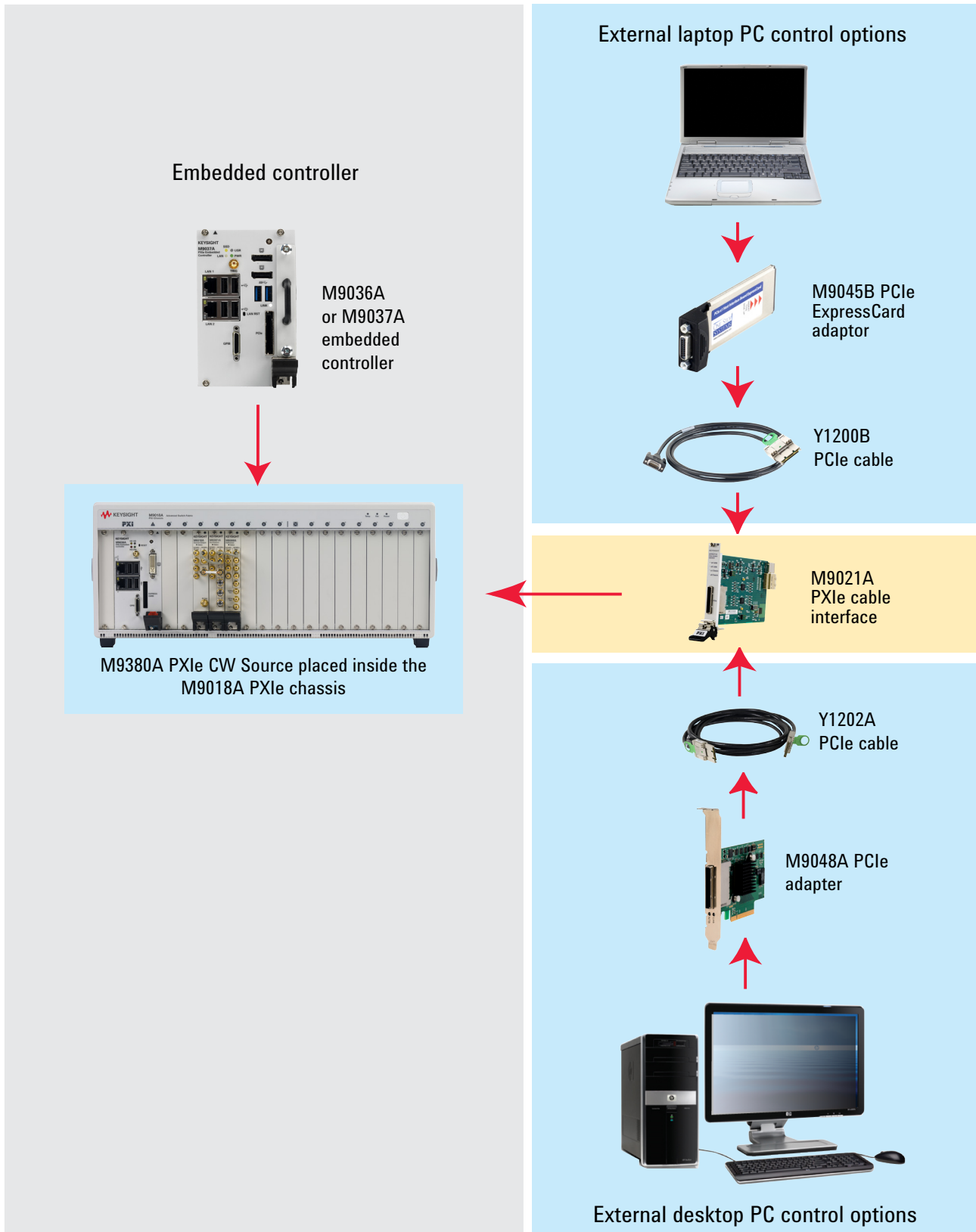


Figure 2. Embedded controller and external PC controller connections.

E. Select Software

Step 1. Start with M9380A base configuration

- The M9380A comes standard with the following software:
 - Keysight IO Libraries Suite including Connection Expert ¹
 - Instrument software, soft front panel, drivers for use with LabVIEW, Visual Studio (including VB Net, C#, C/C++), Keysight VEE ²
 - Programming examples

Step 2. Download free Keysight command expert software³ (optional)

FREE software that provides fast and easy instrument control for the PC. Command Expert combines instrument command sets, command sequences, documentation, syntax checking and command execution in one simple interface. Command Expert helps you to:

- Find instrument commands
- Access command documentation
- Verify command syntax
- Build instrument command sequences
- Execute instrument command sequences
- Integrate sequences in MATLAB, Visual Studio, Excel, LabVIEW, Keysight VEE or Keysight SystemVue PC application environment
- Generate code for command sequences in MATLAB, Visual C#, Visual Basic.NET and Visual C/C++
- Profile command execution time
- Debug command sequences using breakpoints and single stepping

1. Both IO library (version 16.2 or newer) and Connection Expert software need to be installed on the PC controlling the equipment.
2. Find latest versions of this software at www.keysight.com/find/m9380a.
3. To download or get more information on Command Expert, please visit www.keysight.com/find/commandexpert.

F. Select Services-warranty, Calibration, Startup Assistance

| | | |
|---|----------------------------|--|
| ● | One day startup assistance | Included in base configuration |
| ● | Included | 3-year warranty (return to Keysight), standard |
| ○ | R-51B-001-5Z | 5-year return to Keysight warranty assurance plan |
| ○ | M9380A-UK6 | Commercial calibration certificate with test data for M9380A (M9301A, M9310A) |
| ○ | M9300A-UK6 | Commercial calibration certificate with test data for M9300A |
| ○ | R1280X | Express Warranty - 5 day turnaround For 3 years |
| | | Calibration certificate with measurement results available only at time of purchase. |
| | | Calibration certificate with measurement results available only at time of purchase. |
| | | Available in the US, Japan, China and many EU countries |

Global warranty

Keysight Technologies provides an excellent warranty service with all of its test and measurement equipment. It provides the peace of mind that today's high tech industry requires. Your investment is protected by Keysight's global reach in more than 100 countries (either directly or through distributors). The warranty gives you convenient standard coverage for the country in which the product is used, eliminating the need to ship equipment back to the country of purchase. Keysight's warranty service provides:

- All parts and labor necessary to return your investment to full specified performance
- Recalibration for products supplied originally with a calibration certificate
- Return shipment

Express warranty

Reduce downtime with the fastest repair service in the industry. The express warranty upgrades the global warranty to provide:

- 5 day typical turnaround repair service in the US, Japan, China and many EU countries or up to a 10 day improvement in turnaround time in the rest of the world.
- Priority return shipment

One day startup assistance

A Keysight Technologies applications engineer will get you started quickly by helping you install the modules in a chassis, configure the controller, load software and start making measurements.

Calibration services

The modular products are factory calibrated and shipped with an ISO-9002, NIST-traceable calibration certificate. A one year calibration cycle is recommended. The M9380A is supported by the Keysight N7800A Calibration Software to perform calibrations that test all product specifications and is compliant with ISO 17025:2005, ANSI/NCCL Z540.3-2006 and Measurement Uncertainty per ISO Guide to Expression of Measurement Uncertainty 1995.

Product Information: www.keysight.com/find/contactus
Or call: 1 800 829-4444 US

Repair and Calibration: www.keysight.com/find/infoline
Parts and Accessories: www.parts.keysight.com
For all modular products: www.keysight.com/find/modular

G. Upgrades

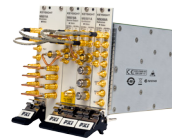
Your product can be easily upgraded after the initial purchase. All PXIe CW Source options are controlled by a licensing key and can be quickly upgraded.

How to upgrade your PXIe CW source:

1. Contact your Keysight representative to place an order for an option upgrade.
2. You will receive your hardware entitlement certificate via email.
3. Redeem the certificate online by following the instructions provided to receive a license key file.
4. Install the license key file using the Keysight License Manager.
5. Begin using the new capability.

H. Related Product

- M9381A PXIe Vector Signal Generator
See Configuration Guide
(literature no. 5991-0897EN)



Cable Connections for a Single M9380A CW Source

The following table and images describe the cables and required connections. Torque specification for all SMA connectors is 8 lb-in (0.904 Nm). An SMA 5/16 socket wrench and SMB/MMCX removal tool are provided with the M9380A.

All of the following parts are included with the M9380A. Replacement parts can be ordered separately.

| Reference Tag | Product Number | Connection | Cable description |
|---------------|----------------|---|---|
| Not shown | 8121-2063 | External reference into M9300A Ref In | Coaxial BNC (male) - SMB (female), right angle, 1200 mm |
| A1 | 8120-5091 | M9300A 100 MHz Out 1 to M9301A 100 MHz In | Coaxial SMB (female) - SMB (female) |
| A2 | 8120-5091 | M9301A 100 MHz Out to M9310A 100 MHz In | Coaxial SMB (female) - SMB (female) |
| B1 | W1312-20237 | M9301A RF/LO Out 1A to M9310A RF In | Semi-rigid, SMA (male) - SMA (male) |

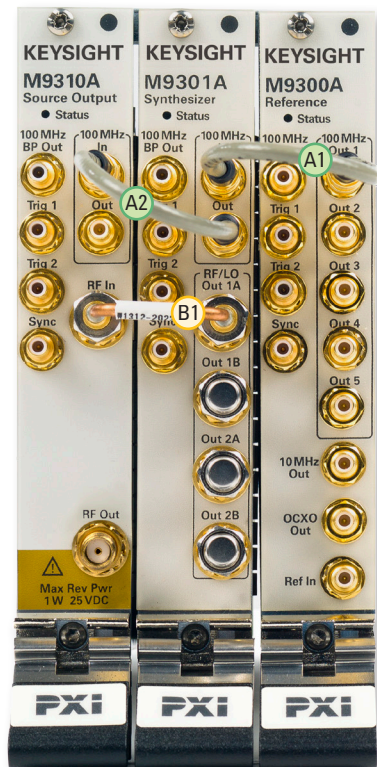


Figure 3. Cable connections for the M9380A and M9300A.

Using a M9380A in a Non-Keysight Chassis

The M9380A (with M9300A Frequency Reference) can be successfully installed in a non-Keysight chassis. Please use the following guidelines.

- Ensure that the chassis has 3 consecutive PXIe or PXI-H slots which can be used by the M9380A and M9300A.
- Ensure that the chassis and controller supports peer-to-peer PXI Express I/O switch topology.
- Ensure that controller selected is compatible with chassis.

For technical assistance with non-Keysight equipment, please refer to the equipment manufacturer's website.

PC Requirements for M9380A Control¹

| | Windows 7 and Vista | Windows XP |
|-----------------------------------|---|---|
| Operating system | Windows 7 (32 & 64 bit) Windows Vista, SP 1 & 2 (32 & 64 bit) | Windows XP, SP 3 |
| Processor speed | 1.5 GHz Dual Core (x86 or x64) minimum, 2.4 GHz recommended No support for Itanium64 | 1.5 GHz Dual Core minimum, 2.4 GHz recommended |
| Available memory | 4 GB minimum 8 GB recommended | 3 GB minimum |
| Available disk space ³ | 1.5 GB available hard disk space includes: 1 GB for Microsoft.NET Framework 3.5 SPI ² 100 MB for Keysight IO Libraries Suite | |
| Video | Support for DirectX 9 graphics with 128 MB graphics recommended (SuperVGA supported) | SuperVGA (800 x 600) 256 colors or more |
| Browser | Microsoft Internet Explorer 7.0 or greater | Microsoft Internet Explorer 6.0 or greater |

1. For a list of computers compatible with Keysight Technologies PXIe M9018A Chassis, refer to Tested Computer Technical Overview (literature no. 5990-7632EN).
2. .NET Framework Runtime Components are installed by default with Windows Vista and Windows 7. Therefore, you may not need this amount of available disk space.
3. Because of the installation procedure, less memory may be required for operation than is required for installation.

myKeysight

myKeysight

www.keysight.com/find/mykeysight

A personalized view into the information most relevant to you.



www.axiestandard.org

AdvancedTCA® Extensions for Instrumentation and Test (AXIe) is an open standard that extends the AdvancedTCA for general purpose and semiconductor test. Keysight is a founding member of the AXIe consortium. ATCA®, AdvancedTCA®, and the ATCA logo are registered US trademarks of the PCI Industrial Computer Manufacturers Group.



www.lxistandard.org

LAN eXtensions for Instruments puts the power of Ethernet and the Web inside your test systems. Keysight is a founding member of the LXI consortium.



www.pxisa.org

PCI eXtensions for Instrumentation (PXI) modular instrumentation delivers a rugged, PC-based high-performance measurement and automation system.



Three-Year Warranty

www.keysight.com/find/ThreeYearWarranty

Keysight's commitment to superior product quality and lower total cost of ownership. The only test and measurement company with three-year warranty standard on all instruments, worldwide.



Keysight Assurance Plans

www.keysight.com/find/AssurancePlans

Up to five years of protection and no budgetary surprises to ensure your instruments are operating to specification so you can rely on accurate measurements.



www.keysight.com/quality

Keysight Technologies, Inc.
DEKRA Certified ISO 9001:2008
Quality Management System

Keysight Channel Partners

www.keysight.com/find/channelpartners

Get the best of both worlds: Keysight's measurement expertise and product breadth, combined with channel partner convenience.

www.keysight.com/find/modular

www.keysight.com/find/m9380a

For more information on Keysight Technologies' products, applications or services, please contact your local Keysight office. The complete list is available at: www.keysight.com/find/contactus

Americas

| | |
|---------------|------------------|
| Canada | (877) 894 4414 |
| Brazil | 55 11 3351 7010 |
| Mexico | 001 800 254 2440 |
| United States | (800) 829 4444 |

Asia Pacific

| | |
|--------------------|----------------|
| Australia | 1 800 629 485 |
| China | 800 810 0189 |
| Hong Kong | 800 938 693 |
| India | 1 800 112 929 |
| Japan | 0120 (421) 345 |
| Korea | 080 769 0800 |
| Malaysia | 1 800 888 848 |
| Singapore | 1 800 375 8100 |
| Taiwan | 0800 047 866 |
| Other AP Countries | (65) 6375 8100 |

Europe & Middle East

| | |
|----------------|---------------|
| Austria | 0800 001122 |
| Belgium | 0800 58580 |
| Finland | 0800 523252 |
| France | 0805 980333 |
| Germany | 0800 6270999 |
| Ireland | 1800 832700 |
| Israel | 1 809 343051 |
| Italy | 800 599100 |
| Luxembourg | +32 800 58580 |
| Netherlands | 0800 0233200 |
| Russia | 8800 5009286 |
| Spain | 0800 000154 |
| Sweden | 0200 882255 |
| Switzerland | 0800 805353 |
| | Opt. 1 (DE) |
| | Opt. 2 (FR) |
| | Opt. 3 (IT) |
| United Kingdom | 0800 0260637 |

For other unlisted countries:
www.keysight.com/find/contactus
(BP-07-10-14)