

Keysight Technologies

EXF Wireless Test Set for Femtocell

E6650A



Accelerate Femtocell Manufacturing

As small cells gain momentum, keeping pace with growing demand and aggressive schedules is easier when you have access to deeper resources. It starts with the new Keysight EXF wireless test set.

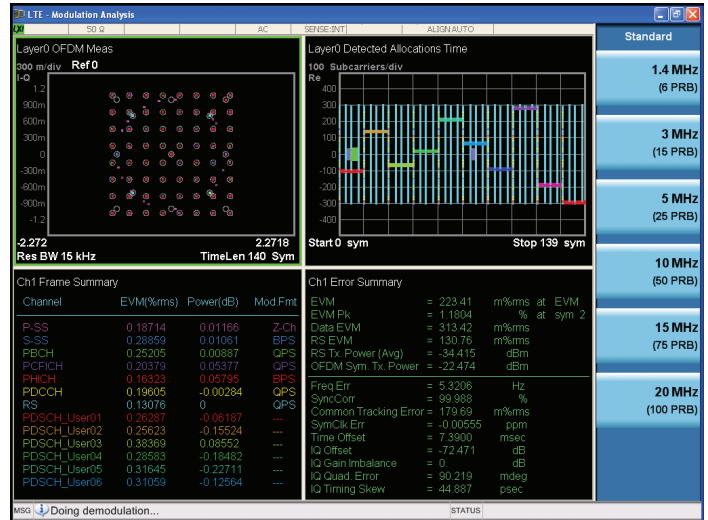
The EXF is the industry's first one-box tester dedicated to femtocell manufacturing, and it's validated with the latest cellular and WLAN chipsets. It also delivers the speed, performance and scalability you need to ramp up rapidly and lower your cost of test.

- Reduce overall test time with hardware and software elements optimized for speed
- Easily test multi-format femtocell designs that include 2G, 3G, 4G and WLAN
- Migrate faster through compatibility with X-Series signal analyzers and signal generators
- Get up and running rapidly with validated cellular and WLAN chipsets
- Preserve your investment and evolve with changing requirements

Access our expertise in base-station and high-volume testing and accelerate femtocell manufacturing—with the EXF.

Reduce overall test time with hardware and software elements optimized for speed

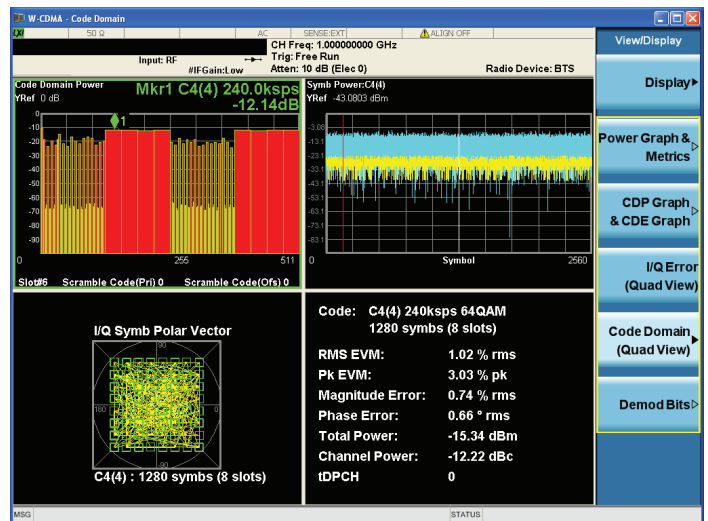
- Handle high volumes with multi-DUT testing and parallel, sequential and hybrid methods in one chassis
 - Accelerate testing with up to four transmit/receive (TRX) channels: each is a complete vector signal analyzer/vector signal generator (VSA/VSG)
 - Create high-density multi-port test stations with two full-duplex and two half-duplex ports per TRX
- Get ultra-fast processing and data transfers with a quad-core controller and high-bandwidth PXIe backplane
- Test faster with advanced sequencing and single-acquisition multiple measurements (SAMM)



LTE FDD modulation analysis measurement

Easily test multi-format femtocell designs that include 2G, 3G, 4G and WLAN

- Cover cellular and WLAN up to 6 GHz with 160-MHz bandwidth in each TRX
 - Test LTE FDD, LTE TDD, W-CDMA/HSPA/HSPA+, GSM/EDGE-Evo and TD-SCDMA
 - Verify 802.11a, b, g, n and ac
- Install one set of measurement applications in the main controller for use with up to four TRX per chassis



W-CDMA transmitter measurement

Migrate faster through compatibility with the X-Series signal analyzers and signal generators used in R&D

- Transition seamlessly to manufacturing with repeatable results from common measurement applications
- Gain efficiency by leveraging our experience in macro base-station testing and high-volume manufacturing

Get up and running rapidly with validated cellular and WLAN chipsets

- Quickly ramp up from NPI to volume manufacturing with proven results from cellular and WLAN chipsets
- Simplify test automation with standardized SCPI commands and reference drivers
- Tune the EXF to your needs through the expertise of our local application engineers

Preserve your investment and easily evolve with changing requirements

- Easily add more TRX or upgrade frequency coverage and analysis bandwidth
- Scale up with one or more test stations in the same footprint

For more information on Keysight Technologies' products, applications or services, please contact your local Keysight office. The complete list is available at: www.keysight.com/find/contactus

www.keysight.com/find/EXF
www.keysight.com/find/E6650A

This information is subject to change without notice.
 © Keysight Technologies, 2014
 Published in USA, September 10, 2014
 5991-4992EN
www.keysight.com