

Keysight E5063A Network Analyzer

NOTICE: This document contains references to Agilent Technologies. Agilent's former Test and Measurement business has become Keysight Technologies. For more information, go to www.keysight.com.



Notices

© Keysight Technologies 2014

No part of this manual may be reproduced in any form or by any means (including electronic storage and retrieval or translation into a foreign language) without prior agreement and written consent from Keysight Technologies as governed by United States and international copyright laws.

Manual Printing History

The manual's printing date and part number indicate its current edition. The printing date changes when a new edition is printed (minor corrections and updates that are incorporated at reprint do not cause the date to change). The manual part number changes when extensive technical changes are incorporated.

April 2014 First Edition
November 2014 Second Edition

Manual Part Number

E5063-90100

Edition

Edition 2, November 2014

Printed in Malaysia

Keysight Technologies
1-3-3 Higashikawasaki-cho, Chuo-ku Kobe
Hyogo Japan

Warranty

The material contained in this document is provided "as is," and is subject to being changed, without notice, in future editions. Further, to the maximum extent permitted by applicable law, Keysight disclaims all warranties, either express or implied, with regard to this manual and any information contained herein, including but not limited to the implied warranties of merchantability and fitness for a particular purpose. Keysight shall not be liable for errors or for incidental or consequential damages in connection with the furnishing, use, or performance of this document or of any information contained herein. Should Keysight and the user have a separate written agreement with warranty terms covering the material in this document that conflict with these terms, the warranty terms in the separate agreement shall control.

Technology Licenses

The hardware and/or software described in this document are furnished under a license and may be used or copied only in accordance with the terms of such license

Restricted Rights Legend

If software is for use in the performance of a U.S. Government prime contract or sub-contract, Software is delivered and licensed as "Commercial computer software" as defined in DFAR 252.227-7014 (June 1995), or as a "commercial item" as defined in FAR 2.101(a) or as "Restricted computer software" as defined in FAR 52.227-19 (June 1987) or any equivalent agency regulation or contract clause. Use, duplication or disclosure of Software is subject to Keysight Technologies' standard commercial license terms, and non-DOD

Departments and Agencies of the U.S. Government will receive no greater than Restricted Rights as defined in FAR 52.227-19(c)(1-2) (June 1987). U.S. Government users will receive no greater than Limited Rights as defined in FAR 52.227-14 (June 1987) or DFAR 252.227-7015 (b)(2) (November 1995), as applicable in any technical data.

Safety Notices

CAUTION

A **CAUTION** notice denotes a hazard. It calls attention to an operating procedure, practice, or the like that, if not correctly performed or adhered to, could result in damage to the product or loss of important data. Do not proceed beyond a **CAUTION** notice until the indicated conditions are fully understood and met.

WARNING

A **WARNING** notice denotes a hazard. It calls attention to an operating procedure, practice, or the like that, if not correctly performed or adhered to, could result in personal injury or death. Do not proceed beyond a **WARNING** notice until the indicated conditions are fully understood and met.

NOTE

A **NOTE** notice denotes important information. It calls attention to a procedure, practice, or condition that is essential for the user to understand.

Caution



Do not exceed the operating input power, voltage, and current level and signal type appropriate for the instrument being used, refer to your instrument's Function Reference.



Electrostatic discharge (ESD) can damage the highly sensitive microcircuits in your instrument. ESD damage is most likely to occur as the test fixtures are being connected or disconnected. Protect them from ESD damage by wearing a grounding strap that provides a high resistance path to ground. Alternatively, ground yourself to discharge any static charge built-up by touching the outer shell of any grounded instrument chassis before touching the test port connectors.

Safety Summary

When you notice any of the unusual conditions listed below, immediately terminate operation and disconnect the power cable.

Contact your local Keysight Technologies sales representative or authorized service company for repair of the instrument. If you continue to operate without repairing the instrument, there is a potential fire or shock hazard to the operator.

- Instrument operates abnormally.
- Instrument emits abnormal noise, smell, smoke or a spark-like light during operation.
- Instrument generates high temperature or electrical shock during operation.
- Power cable, plug, or receptacle on instrument is damaged.
- Foreign substance or liquid has fallen into the instrument.

Manufacturer's Declaration

Herstellerbescheinigung

GERA- USCHEMISSION

LpA < 70 dB

am Arbeitsplatz

normaler Betrieb

nach DIN 45635 T. 19

Manufacturer's Declaration

ACOUSTIC NOISE EMISSION

LpA < 70 dB

operator position

normal operation

per ISO 7779

Regulatory Compliance Information

This product complies with the essential requirements of the following applicable European Directives, and carries the CE marking accordingly:

- The Low Voltage Directive 2006/95/EC
- The EMC Directive 2004/108/EEC

To obtain Declaration of Conformity, please contact your local Keysight Technologies sales office, agent or distributor.

Safety Notice Supplement

- This equipment complies with EN/IEC61010-1:2001.
- This equipment is of MEASUREMENT CATEGORY I (CAT I). Do not use for CAT II, III, or IV.
- Do not connect the measuring terminals to mains.
- This equipment is a POLLUTION DEGREE 2, INDOOR USE product.
- This equipment is tested in stand-alone condition and in combination with the accessories supplied by Keysight Technologies against the requirement of the standards described in the Declaration of Conformity. If it is used as a system component, compliance of related regulations and safety requirements are to be confirmed by the builder of the system.

General Safety Precautions

The following general safety precautions must be observed during all phases of operation, service, and repair of this instrument. Failure to comply with these precautions or with specific WARNINGS elsewhere in this manual may impair the protection provided by the equipment. Such noncompliance would also violate safety standards of design, manufacture, and intended use of the instrument. Keysight Technologies assumes no liability for the customer's failure to comply with these precautions.

NOTE

The E5093A complies with INSTALLATION CATEGORY II as well as POLLUTION DEGREE 2 in IEC61010-1. The E5093A is an INDOOR USE product.

NOTE

The LEDs in the E5093A are Class 1 in accordance with IEC60825-1, CLASS 1 LED PRODUCT.

- **Ground the Instrument**

To avoid electric shock, the instrument chassis and cabinet must be grounded with the supplied power cable's grounding prong.

- **DO NOT Operate in an Explosive Atmosphere**

Do not operate the instrument in the presence of inflammable gasses or fumes. Operation of any electrical instrument in such an environment clearly constitutes a safety hazard.

- **Keep Away from Live Circuits**

Operators must not remove instrument covers. Component replacement and internal adjustments must be made by qualified maintenance personnel. Do not replace components with the power cable connected. Under certain conditions, dangerous voltage levels may remain even after the power cable has been disconnected. To avoid injuries, always disconnect the power and discharge circuits before touching them.

- **DO NOT Service or Adjust the Instrument Alone**

Do not attempt internal service or adjustment unless another person, capable of rendering first aid and resuscitation, is present.

- **DO NOT Substitute Parts or Modify the Instrument**

To avoid the danger of introducing additional hazards, do not install substitute parts or perform unauthorized modifications to the instrument. Return the instrument to an Keysight Technologies Sales and Service Office for service and repair to ensure that safety features are maintained in operational condition.

- Dangerous Procedure Warnings










Warnings, such as the example below, precede potentially dangerous procedures throughout this manual. Instructions contained in the warnings must be followed.

WARNING

Dangerous voltage levels, capable of causing death, are present in this instrument. Use extreme caution when handling, testing, and adjusting this instrument.

Safety Symbols

General definitions of safety symbols used on the instrument or in manuals are listed below.

-  Instruction Manual symbol: the product is marked with this symbol when it is necessary for the user to refer to the instrument manual.
-  Alternating current.
-  Direct current.
-  On (Supply).
-  Off (Supply).
-  In-position of push-button switch.
-  Out-position of push-button switch.
-  A chassis terminal; a connection to the instrument's chassis, which includes all exposed metal structure.
-  Standby.

Certification

Keysight Technologies certifies that this product met its published specifications at the time of shipment from the factory. Keysight Technologies further certifies that its calibration measurements are traceable to the United States National Institute of Standards and Technology, to the extent allowed by the Institution's calibration facility or by the calibration facilities of other International Standards Organization members.

Documentation Warranty

The material contained in this document is provided "as is," and is subject to being changed, without notice, in future editions. Further, to the maximum extent permitted by applicable law, Keysight disclaims all warranties, either express or implied with regard to this manual and any information contained herein, including but not limited to the implied warranties of merchantability and fitness for a particular purpose. Keysight shall not be liable for errors or for incidental or consequential damages in connection with the furnishing, use, or performance of this document or any information contained herein. Should Keysight and the user have a separate written agreement with warranty terms covering the material in this document that conflict with these terms, the warranty terms in the separate agreement will control.

Exclusive Remedies

The remedies provided herein are Buyer's sole and exclusive remedies. Keysight Technologies shall not be liable for any direct, indirect, special, incidental, or consequential damages, whether based on contract, tort, or any other legal theory.

Assistance

Product maintenance agreements and other customer assistance agreements are available for Keysight Technologies products.

For any assistance, contact your nearest Keysight Technologies Sales and Service Office. Addresses are provided at the back of this manual.

Manuals for E5063A

Keysight provides the following three manuals for E5063A. The latest version of all documentations can be downloaded from <http://www.keysight.com/find/e5063a-manual>.

Installation Guide

The installation guide provides start up setup information when you use the E5063A for the first time, system recovery procedures and troubleshooting information when Windows cannot boot up. See this manual first when you use the E5063A for the first time.

Troubleshooting Guide

The troubleshooting guide (this manual) provides troubleshooting information when operational problems are encountered on the E5063A. See this manual when you need to troubleshoot the E5063A.

Online Help

The online help provides the information about the quick start, measurement operation, programming, built-in VBA, I/O interface and error messages. This is pre-installed in the E5063A. Press the **[Help]** hard key on the front panel to open. Quick Start helps in understanding the E5063A operation quickly.

The latest version of online help is available at:
<http://ena.tm.keysight.com/e5063a/manuals/webhelp/eng/>

The online help has context sensitive help, which is a great feature of the E5063A help. It allows you to get information about the selected softkey by pressing the **Help** key in the E5063A or by pressing **F1** in a keyboard attached to the E5063A or by clicking the help button in a dialog box. With context sensitive help, users can receive information quickly about the area the user is working in the firmware of the E5063A. It provides information relevant to the task that needs to be accomplished and reduces the time to search relevant information required to complete a task.

In This Guide...

The following shows the contents of this manual.

Chapter 1, "Troubleshooting"

This chapter provides the procedure to isolate a faulty assembly in the E5063A.

Chapter 2, "Post Repair Procedure"

This chapter lists the procedures required to verify the E5063A operation after an assembly is replaced with a new one.

Contents

Regulatory Compliance Information 6

Safety Notice Supplement 7

1 Troubleshooting

Introduction 18

How to exit from the E5063A Measurement View 19

To Troubleshoot the Instrument 20

Primary Trouble Isolation 20

No Display Troubleshooting 22

Booting Process Troubleshooting 27

Troubleshooting Using Diagnostic Test 32

Diagnostic Test 32

Diagnostic Test Failure Troubleshooting 34

Function Specific Troubleshooting 35

To Check the Front Panel 36

To Check the Touch Panel 37

To Check the LCD 38

To Check the External Keyboard 38

To Check the Mouse 39

To Check the External Monitor Output Port 39

To Check the External Trigger Input 39

To Check the GPIB 40

To Check the USB 40

Performance Test failure Troubleshooting 41

Recommended Adjustment for Performance Test failure 41

Adjustment failure Troubleshooting 43

Performance Test failure Troubleshooting 43

2 Post Repair Procedure

Post Repair Procedures 46

License file 46

Regional Sales and Support Offices

1 Troubleshooting

Introduction	18
How to exit from the E5063A Measurement View	19
To Troubleshoot the Instrument	20
No Display Troubleshooting	22
Booting Process Troubleshooting	27
Troubleshooting Using Diagnostic Test	32
Function Specific Troubleshooting	35
Performance Test failure Troubleshooting	41

This chapter provides the procedure to isolate a faulty assembly in the E5063A.

Introduction

WARNING

These servicing instructions are for use by qualified personnel only. To avoid possible electrical shock, do not perform any servicing unless you are qualified to do so.

WARNING

The opening of covers or removal of parts are likely to expose dangerous voltages. Disconnect the instrument from its power supply beforehand.

CAUTION

Many of the assemblies in the instrument are very susceptible to damage from ESD (electrostatic discharge). Perform the following procedures only at a static-safe workstation and wear a grounding strap.

CAUTION

DO NOT operate without following instructions. Program or files in the instrument may be broken.

How to exit from the E5063A Measurement View

Some troubleshooting procedures require you to exit from the E5063A Measurement View. The following procedure describes the steps to to exit from the E5063A Measurement View.

Step 1. Connect a mouse to the connectors on the E5063A rear panel.

Step 2. Turn the instrument on.

Step 3. Press **System** key.

Step 4. Click **Service**.

Step 5. Click **Exit**.

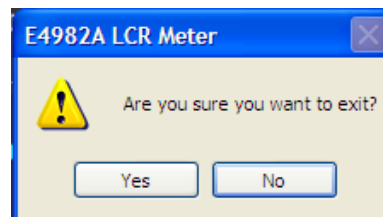


Figure 1 Exit dialog box

Step 6. Click **Yes** in **Exit** menu. The E5063A exits from Measurement View to Windows desktop.

NOTE

If you want to return to the Measurement View, double-click the "E5063A" icon on the desktop.

NOTE

if you need to shut down the E5063A, press the standby switch on the front panel.

To Troubleshoot the Instrument

This section describes the basic troubleshooting procedural flow when servicing the E5063A. The primary procedural tool in this section is the flowchart. The flowchart contains the entire troubleshooting path from the failure symptom to the isolation of faulty assembly, and will direct you through the repair in an orderly manner through the possible failure symptoms. Reference letters (Yes/No) on the flowchart point to procedural steps that briefly explain the next troubleshooting method to be performed.

Primary Trouble Isolation

The primary trouble isolation procedure can be performed without disassembling the E5063A. [Figure 2](#) shows the trouble isolation flow chart.

Step 1. Turn the instrument power on.

A few minutes after the E5063A is turned on, the measurement view is displayed on the screen. The display screen should be similar to [Figure 11, “E5063A application,” on page 31](#).

Step 2. Check the display.

- If no display appears on the LCD after the E5063A is turned on, go to [“No Display Troubleshooting” on page 22](#).
- If the E5063A stops during booting process despite something being displayed on the LCD, go to [“Booting Process Troubleshooting” on page 27](#).

Step 3. Check the basic function.

If the front-panel/keyboard/mouse controls, LCD display, data storage, remote interface or other function (except the measurement function) does not work correctly, go to [“Function Specific Troubleshooting” on page 35](#).

Step 4. Check the measurement function.

If the instrument fails performance test, go to [“Performance Test failure Troubleshooting” on page 41](#).

If the measurement function does not work correctly, perform the diagnostic tests provided in the E5063A’s service function. If the diagnostic tests fail, go to [“Troubleshooting Using Diagnostic Test” on page 32](#).

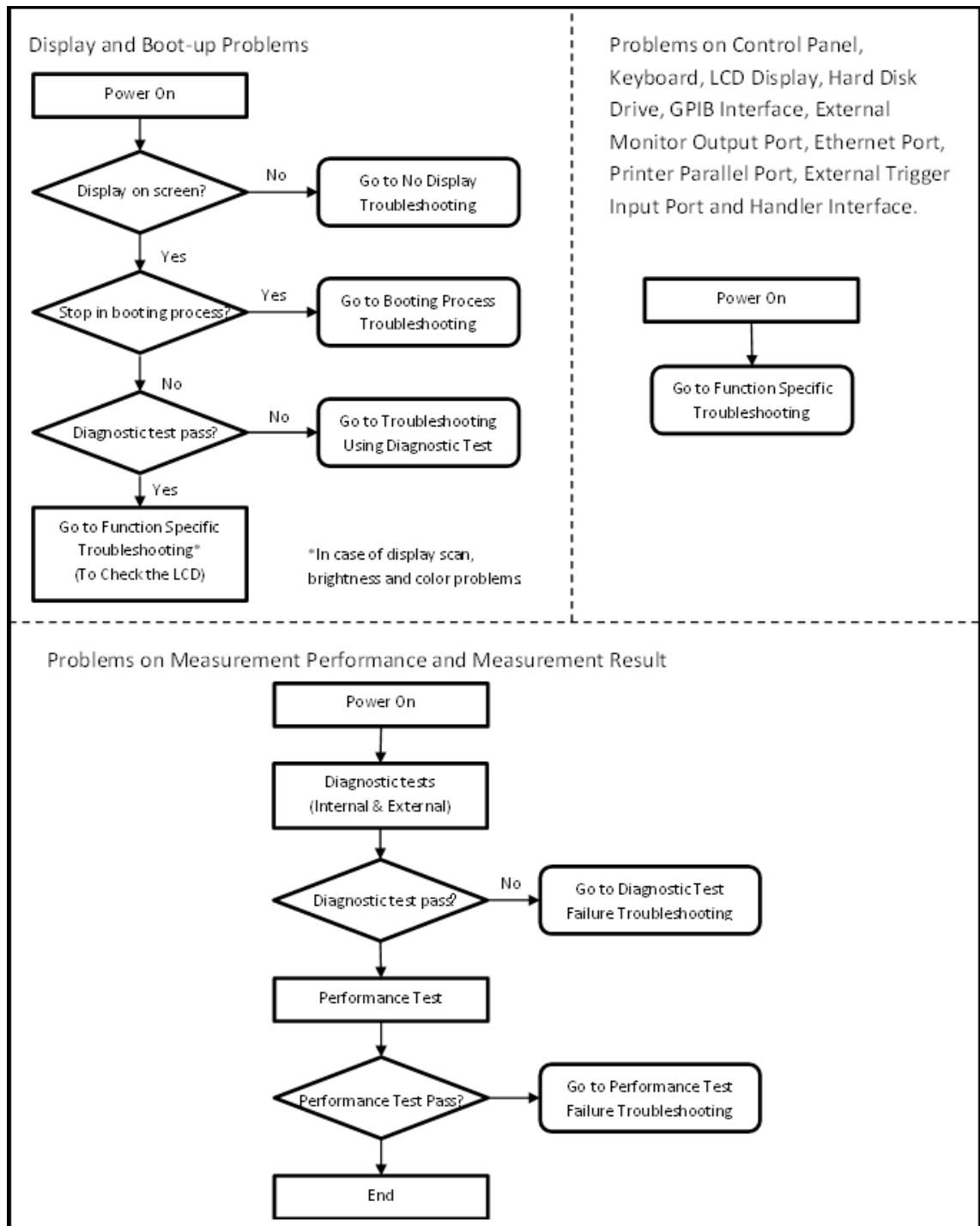


Figure 2 Primary trouble isolation flowchart

No Display Troubleshooting

If the E5063A displays nothing despite being powered from proper ac power line, isolate the failure in accordance with the procedure shown in [Figure 3](#).

Connect the keyboard to the E5063A rear panel connector and start trouble isolation. The methods of trouble isolation are described in the procedural step 1 to 6.

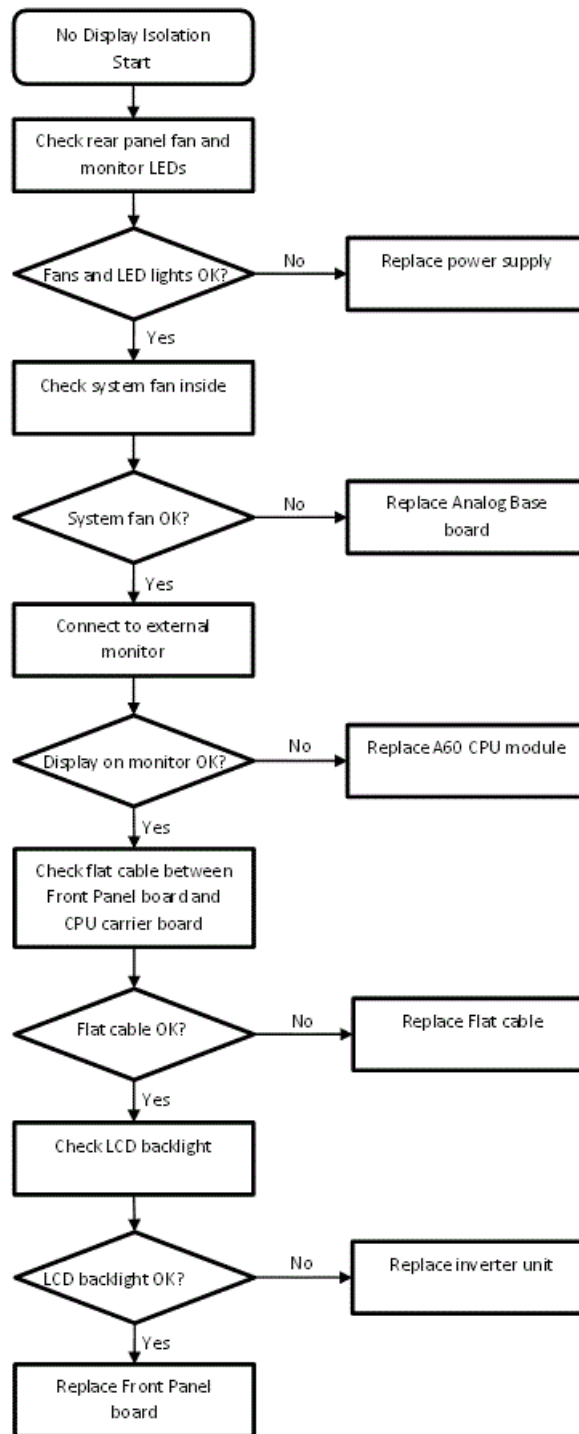


Figure 3 No display trouble isolation procedure

1 Troubleshooting

Step 1. Check fan operation and DC monitor LED.

If the rear panel fan (blower) doesn't run, a failure in power supply is assumed. Remove the E5063A outer cover and check if the following LEDs light:

- +3.3 V and +5 V DC monitor LEDs on A60 CPU module as shown in [Figure 4](#).
- LEDs on A51 DSP module as shown in [Figure 5](#).

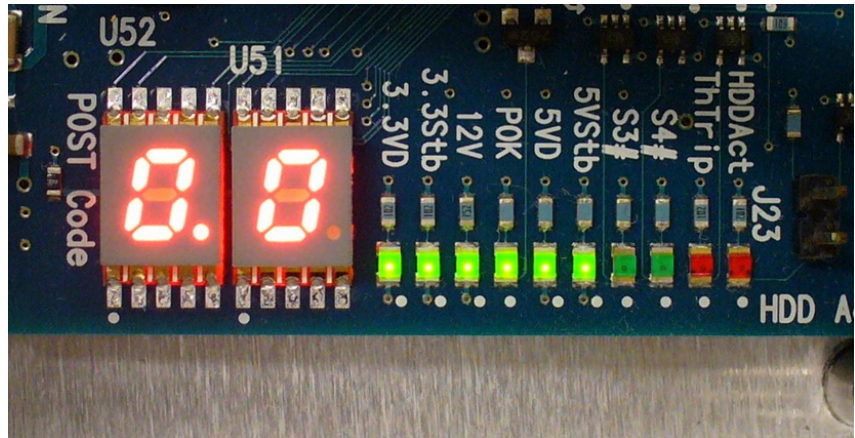


Figure 4 LEDs on CPU module

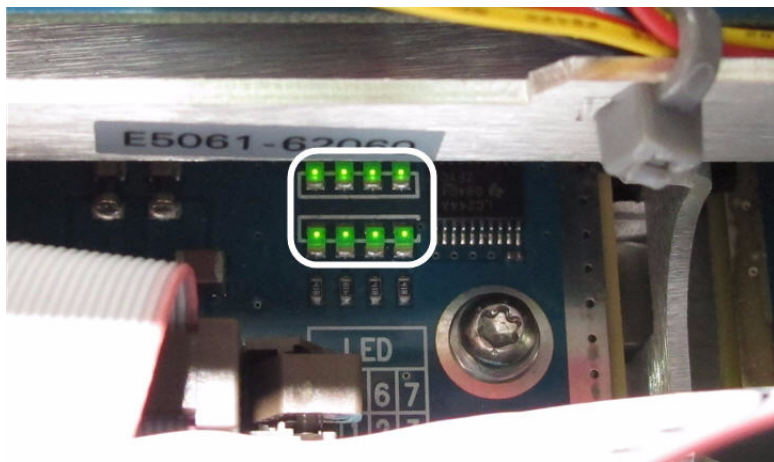


Figure 5 LEDs on DSP module

Step 2. Check system fan inside.

If the system fan, located on the left side of the chassis inside the E5063A, does not run, the problem seems to be in the A51 DSP board or the flat cable between the A51 DSP board and A60 CPU module. In this case, remove the E5063A outer cover and determine if the fan runs or not.

If a beep and power shutdown occurs immediately after the power is turned on, there is a possibility that the fan would not run. The power shutdown occurs the moment the system fan stops by any anomaly. In this case, check the fan.

If the power shutdown occurs without a beep, the problem seems to be with the A51 DSP board or the A60 CPU module.

Step 3. Check LED of “Num Lock” key.

Press the **Num Lock** key on the keyboard. If the LED on the keyboard does not light as shown in **Figure 6**, a problem seems to be in the A60 CPU module.

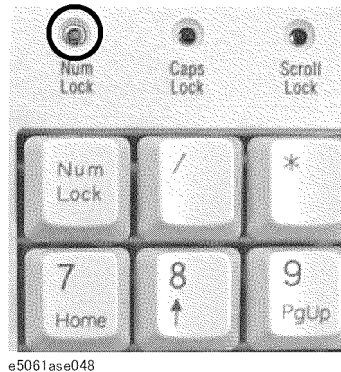


Figure 6 LED of the Num Lock key

Check the following before replacing the A60 CPU module.

- Connections to the A60 CPU Module are normal
- There are no disconnections or loose connections

Step 4. Check the external monitor

Connect an external VGA monitor to the External Monitor Output Port on the E5063A rear panel.

- If something is displayed on the external monitor, the problem seems to be related to the LCD display. Also, check the A52 Front Panel I/F board because the ON/OFF setting of the LCD backlight is controlled by the A52 Front Panel I/F board.
- If nothing is displayed even on the external monitor, the problems seems to be in the A60 CPU module.

Step 5. Check the flat cable

Check the flat cable between the A60 CPU Module and A52 Front Panel I/F board.

Step 6. Check around the backlight

Check the inverter board and the cable between the inverter board and A52 Front Panel I/F board. Also check the cables between the LCD and A52 Front Panel I/F board. If the cables are normal, check the LCD display.

Booting Process Troubleshooting

Figure 7 represents the booting process flow in the E5063A. If the E5063A stops in the booting process, troubleshoot using the following step-by-step procedure.

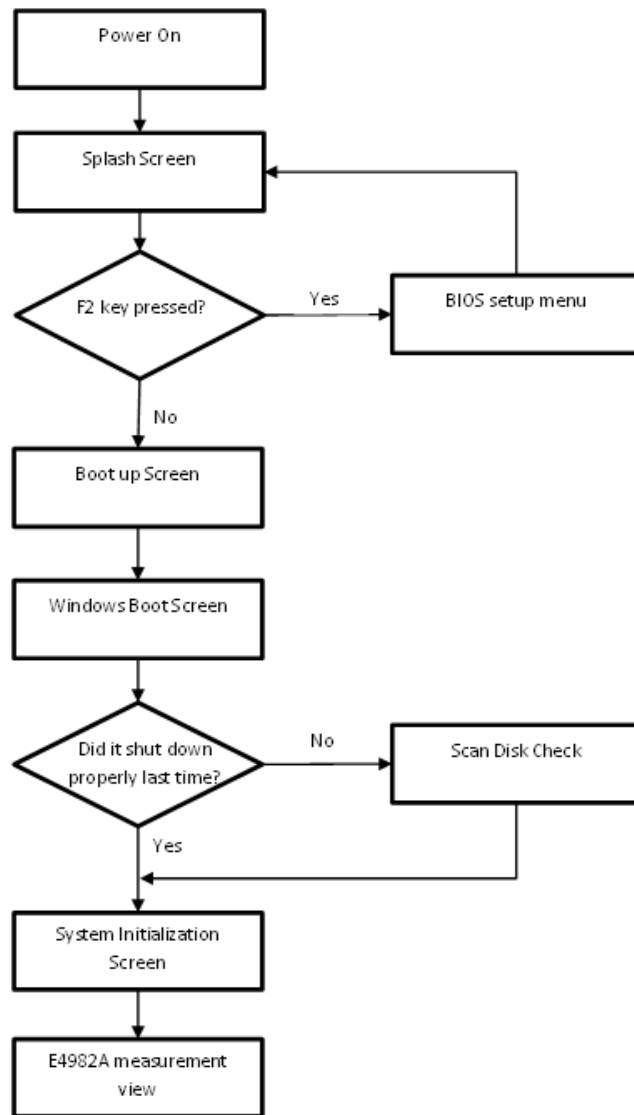


Figure 7 Booting process flowchart

Step 1. Splash Screen.

The splash screen is displayed with Keysight logo as shown in [Figure 8](#).

If the splash screen is displayed, you can assume that the A60 CPU Module is functioning correctly.

NOTE

While the splash screen is displayed, if you want to run the BIOS setup utility, push F2 key on the attached external keyboard as soon as you see the splash screen. The password to enter BIOS setup utility is agtOnly (0 is Zero).

Changing BIOS setting may cause malfunction or lower performance of the instrument.

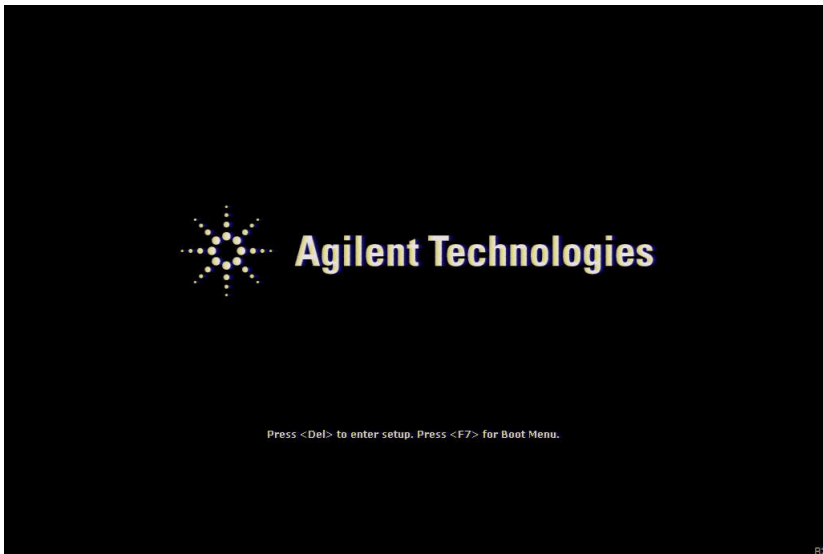


Figure 8 Splash Screen

Step 2. Boot up Screen.

The boot up screen is displayed as shown in [Figure 9](#).

If no selection is made, the system will continue the boot up process after 3 seconds.

NOTE

While the Boot up screen is displayed, if you want to perform system recovery, select **Keysight Recovery System** as soon as the **Windows Boot Manager** screen is displayed. For details of the system recovery, refer to the **Installation Guide**.

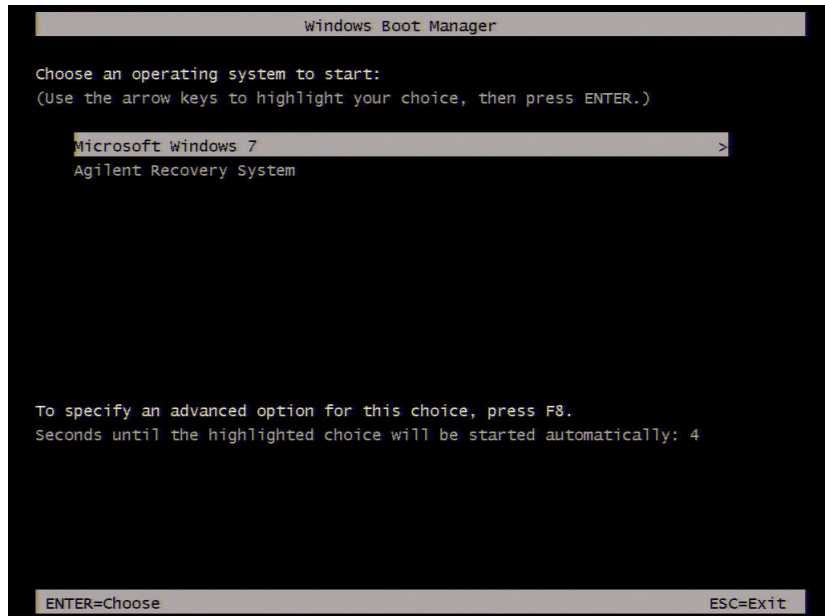


Figure 9 Boot up Screen

Step 3. Windows boot screen.

The Windows boot screen is displayed as shown in **Figure 10**. If the Windows boot screen is displayed, it is assumed that the HDD works and the Windows operating system is starting up.

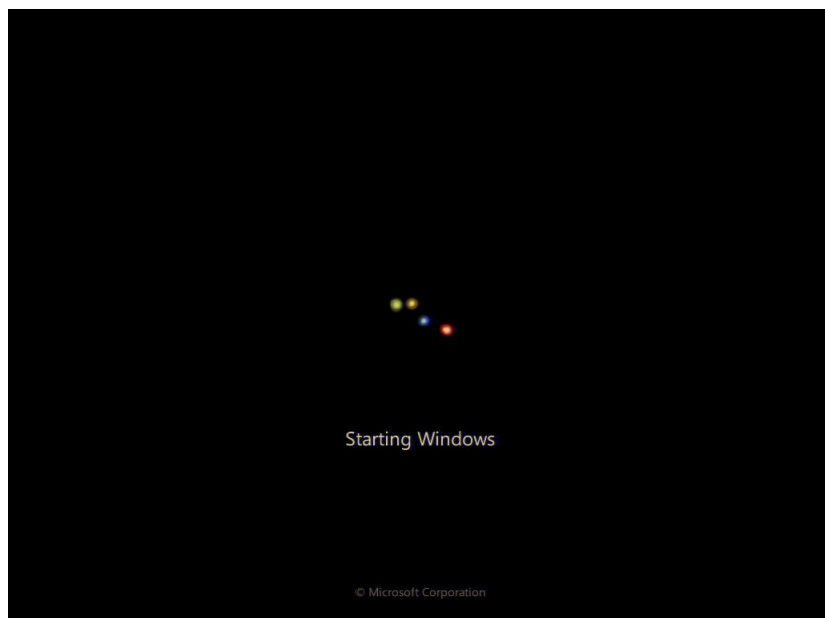


Figure 10 Windows boot screens

If you encounter the following problems, try to execute the system recovery before replacing the HDD.

- “xxx file is missing” message is displayed on DOS screen.
- The window boot screen is not displayed after the splash screen.
- Windows always boots up in Safe Mode.

NOTE

If the E5063A was turned off without proper shutdown process, **Microsoft Scandisk** runs while the windows boot screens are displayed. If a serious problem is found during the scan, execute the system recovery. For details on executing the system recovery, refer to the **Installation Guide**. If the operating system still does not boot up properly after reinstallation, replace the HDD.

NOTE

The operating system automatically checks the device drivers which are necessary for use in the E5063A and are installed in the system before the E5063A is shipped from Keysight factory. If the operating system does not detect them, a message box is displayed. In this case, install the device driver.

Step 4. System Initialization Screen.

The system initialization screen is displayed. If the display whites out, is entirely blue or a dialog box appears, a mass storage problem is suspected. Try to perform the mass storage recovery procedure.

NOTE

If the message “Will Shut Down in Five Seconds” is displayed and shutdown occurs, the A51 DSP board has failed to start up. The following messages may be displayed before the shutdown occurs:

“Fatal Error: Failed to Initialize DSP Driver”

or “Fatal Error: Failed to Initialize DSP”

This message indicates that the DSP board does not work or is not properly connected to the DSP DSP board.

“Fatal Error: Failed to Update DSP Code”

If this happens, the DSP board has failed to write the DSP program into the flash ROM when the firmware was first installed or after being updated to the latest version. A problem with the A51 DSP board or A60 CPU Module is suspected.

Step 5. E5063A Application view.

The E5063A application is executed as shown in **Figure 11** after

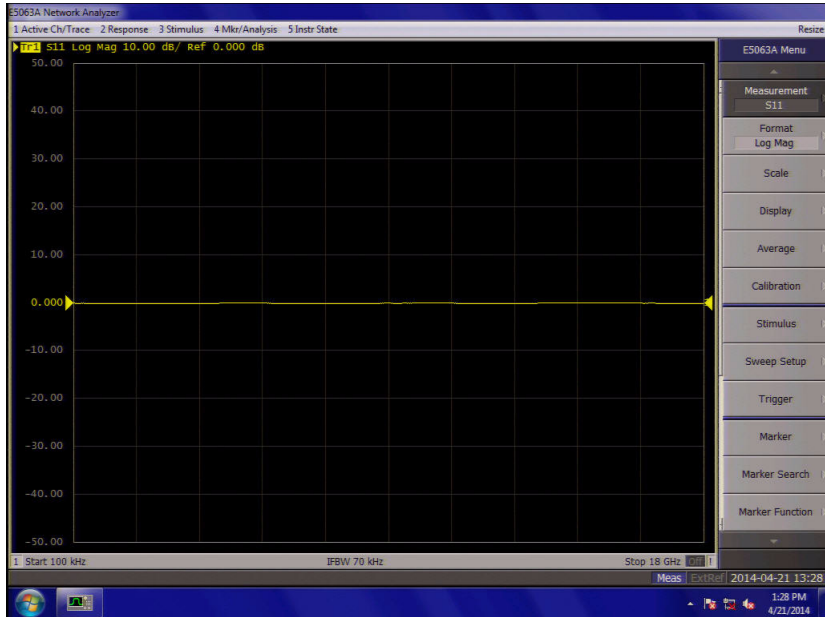


Figure 11 E5063A application

the system initialization is completed without problem.

Troubleshooting Using Diagnostic Test

The E5063A has diagnostic test function to diagnose the analog measurement section and internal dc power supply voltages. The diagnostic tests make it possible to isolate a faulty board assembly. The following paragraphs describe the procedure to perform the diagnostic tests.

Diagnostic Test

To execute the diagnostic test

To isolate faulty board assembly modules, execute the diagnostic test in accordance with the following procedure.

NOTE

To perform the diagnostic test properly, the following conditions must be met:

Environmental temperature: $23^{\circ}\text{C} \pm 5^{\circ}\text{C}$

Warm up time: > 30 minutes

NOTE

Do not operate front panel keys, keyboard and mouse during the diagnostic test. Changing the instrument setting while the diagnostic test is in progress will cause incorrect test results.

Step 1. Press **System** key.

Step 2. Click **Service Menu > Test Menu > Diagnostic Test**.

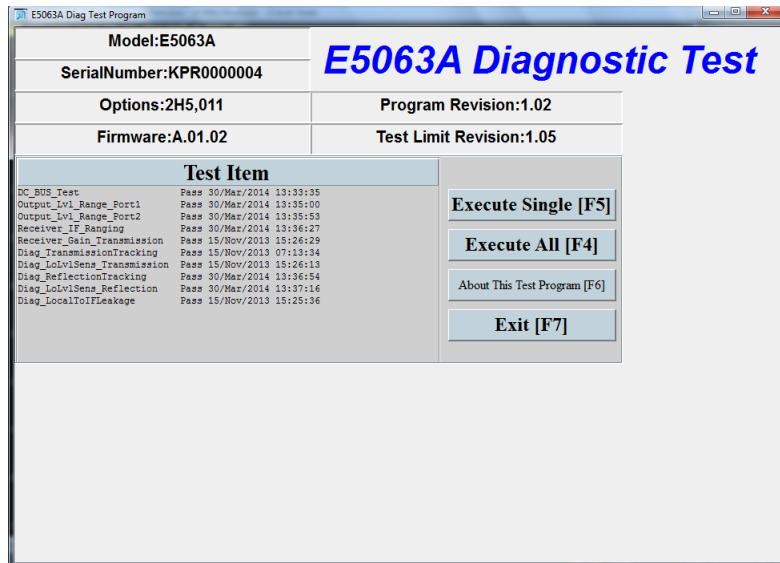


Figure 12 Diagnostic Test 1/3

Step 3. Select Execute All.

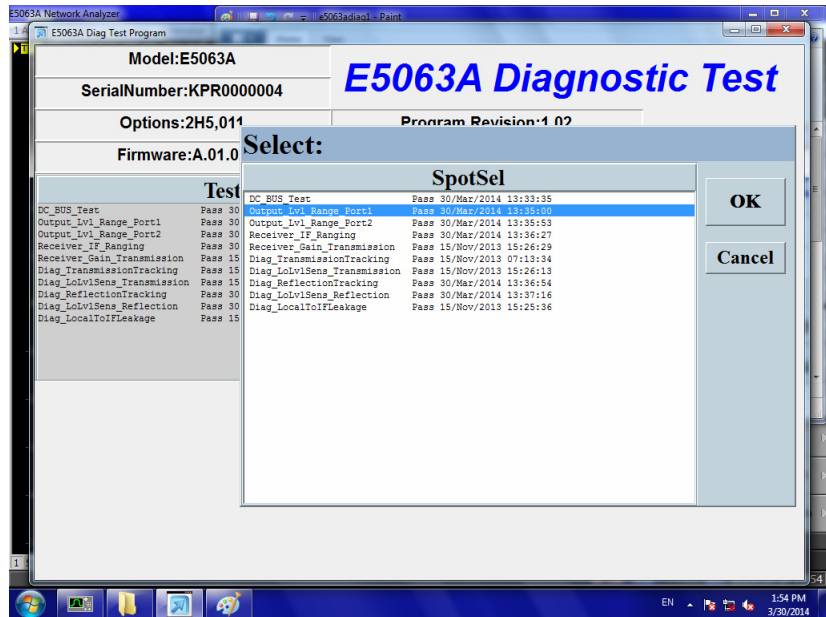


Figure 13 Diagnostic Test 2/3

1 Troubleshooting

Follow the instruction for connection, then click OK to execute the test.

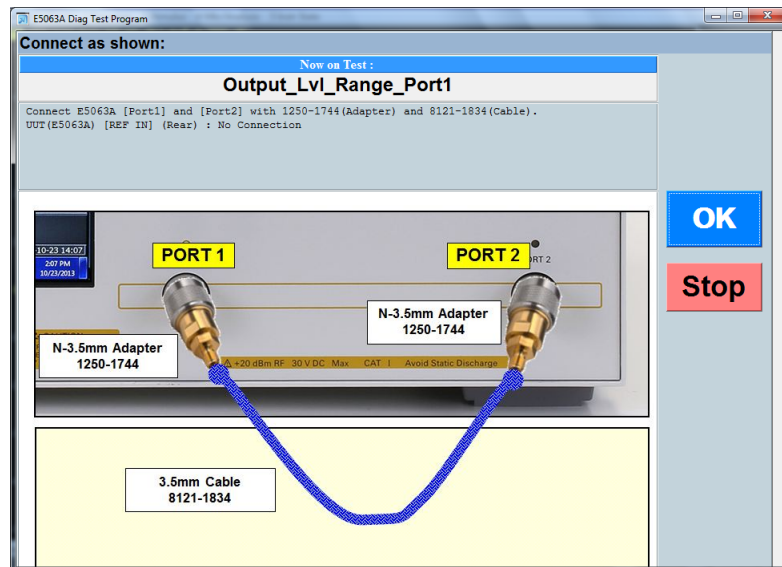


Figure 14 Diagnostic Test 3/3

Step 4. Click **Exit** to exit the diagnostic test.

Diagnostic Test Failure Troubleshooting

Replace the A1 Analog Module when any test in diagnostic test is failed as the A1 module is only one analog board which include both source and receiver in the E5063A.

Function Specific Troubleshooting

If the E5063A exhibits a failure symptom that is related to a specific function or control such as a front panel key control, data storage, remote control interface, external trigger, external keyboard or mouse, isolate the trouble using the Function Specific Troubleshooting procedures described below. The major functions of the E5063A and the troubleshooting procedure for each function are shown in [Table 1](#).

Table 1 Major functions and troubleshooting procedures

Function	Description	Troubleshooting
Front panel keys	All E5063A functions can be set and controlled via the front panel keys.	Refer to “To Check the Front Panel” on page 36
Touch panel	The touch screen display on the E5063A allows all functions in the menu bars, setup windows and dialog boxes to be set by a touch to the screen panel.	Refer to “To Check the Touch Panel” on page 37
LCD display	Almost all the information including the measurement value, setup state, result data processing, menu bar, softkey label and others are indicated on the 10.4-inch color LCD display.	Refer to “To Check the LCD” on page 38
External keyboard	The external keyboard can be used for the entry of numerical and character data when it is connected to the USB connector on the front or rear panel.	Refer to “To Check the External Keyboard” on page 38
Mouse	The mouse can be used to move the pointer on the LCD display, select functions and change settings, when it is connected to the USB connected on the front or rear panel.	Refer to “To Check the Mouse” on page 39
External monitor	An external color monitor can be used to display the same information as the E5063A LCD display, when it is connected to the External Monitor Output Port (15-pin VGA connector) on the rear panel.	Refer to “To Check the External Monitor Output Port” on page 39

1 Troubleshooting

Table 1 Major functions and troubleshooting procedures

GPIB Interface	The GPIB compatibility allows the E5063A to be operated as a talker/listener on IEEE 488 interface bus.	Refer to “To Check the GPIB” on page 40
Handler Interface	The Handler Interface port can be used to transfer comparator decision output data and perform timing synchronization with an external handler.	Refer to “To execute the diagnostic test” on page 32 and “To execute the diagnostic test” on page 32

To Check the Front Panel

Procedure

Step 1. Press **System** key.

Step 2. Click **Service Menu - Test Menu - Front Panel**. This opens the Front Panel Test window as shown in **Figure 15**.

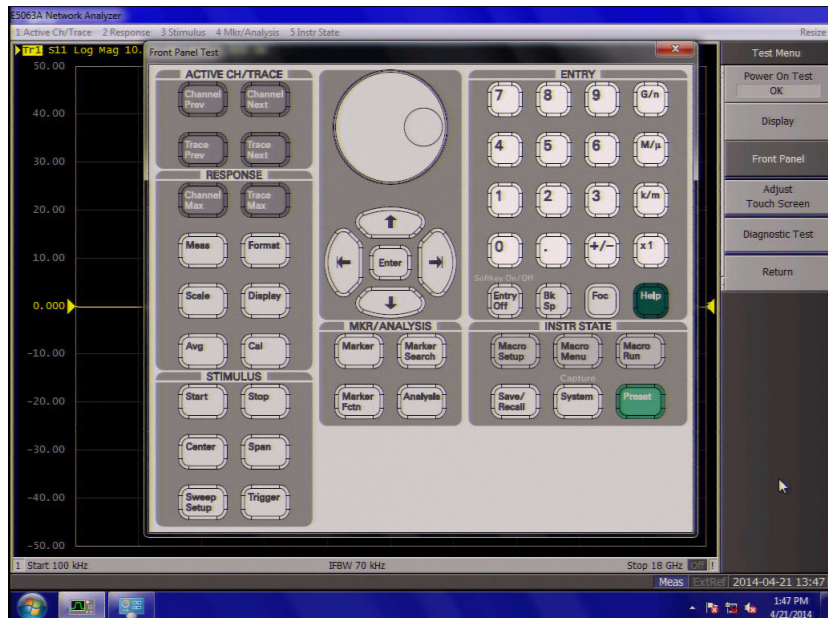


Figure 15 Front Panel Test window 1/2

Step 3. Press the front panel keys. Red ticks will appear on the Front Panel Test window whenever the corresponding key on the front panel is pressed as shown in **Figure 16**. Turn the rotary knob clockwise or counterclockwise. Red ticks will

appear on the left of the rotary knob on the Front Panel Test window when you turn counterclockwise and on the right of the rotary knob when you turn clockwise.

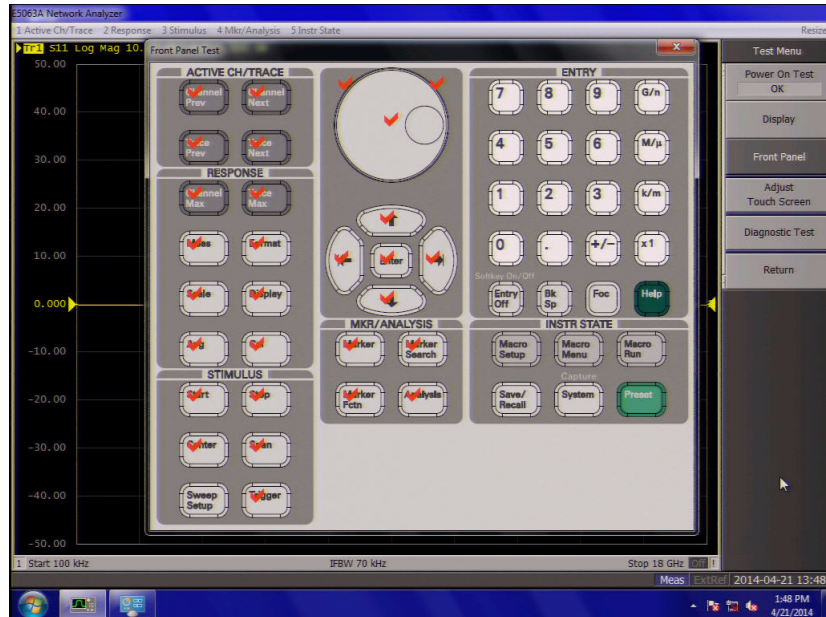



Figure 16 Front Panel Test window 2/2

Step 4. To exit the front panel test, click the  button.

- If multiple keys fail to work, a problem in the A52 Front Panel I/F board or A60 CPU Module is suspected. Also, check the flat cable between the A52 Front Panel I/F board and A60 CPU Module.
- If only a specific key fails to work, check first if the key is subsided in the panel.
- If the rotary knob fails to work, check the A52 Front Panel I/F board involving the RPG.

To Check the Touch Panel

Procedure

Using the LCD display panel, select or change the setting of a function in the softkey menu and then, perform the same operation using the hardkeys.

- If the touch panel does not work correctly when the hardkeys function normally, a failure seems to be in the touch screen controller assembly or touch-panel LCD assembly. (The touch panel is not replaceable independently of the LCD.)
- Check the cable between the touch screen controller and the serial interface connector on the A60 CPU module.
- If no problem is found in the above checks, a failure in the A60 CPU Module is suspected.

To Check the LCD

Procedure

Step 1. Press **System** key.

Step 2. Click **Service - Display Test**. The whole LCD screen turns RED.

Step 3. Tap anywhere on the LCD to go through the color test screen of RED, GREEN, BLUE, WHITE and BLACK. You can also use the rotary knob turned clockwise or press the **ENTRY** keys on the E5063A front panel.

If the color test screen does not appear, perform Step 4.

Step 3. Connect an external VGA monitor to the External Monitor Output Port on the E5063A rear panel.



- If the monitor screen view is the same as the LCD display, the problem seems to be in the A60 CPU module.
- If only the LCD display has a problem, check the flat cable between the A52 Front Panel I/F board and A60 CPU Module.
- If the cables are normal, check the A51 LCD module.

To Check the External Keyboard

Procedure

Step 1. Connect an external keyboard to the E5063A rear panel USB port.

Step 2. Press **Meas** key.

Step 3. Press  and  keys on the external keyboard, and verify that the cursor on the menu bar moves up and down. If it doesn't work, the external keyboard or the A60 CPU Module may be faulty.

To Check the Mouse

Procedure

Step 1. Connect a mouse to the E5063A rear panel USB port.

Step 2. Verify that the mouse buttons work normally. If any button does not work or the mouse pointer does not move, a failure in the mouse or the A60 CPU Module is suspected.

To Check the External Monitor Output Port

Procedure

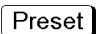
Step 1. Connect an external VGA color monitor to the External Monitor Output Port on the E5063A rear panel.

Step 2. Turn the external monitor on.

Step 3. Verify that the monitor screen view is the same as the display on the LCD. If the monitor screen view is abnormal, a failure seems to be in the A60 CPU module.

To Check the External Trigger Input

Procedure

Step 1. Press  key.

Step 2. Press **Trigger Mode** key.

Step 3. Click **External** in the menu bar to set the trigger mode to External.

Step 4. Connect a BNC Short or 50 ohm termination to the External Trigger Input Port on the rear panel and disconnect it. A measurement trigger should be generated and a measurement result should be refreshed.

Step 5. If no trigger occurs, a failure in the A51 DSP board is suspected.

To Check the GPIB

Procedure

Perform the E5063A Performance Test program. If the controller cannot detect the E5063A, the problem seems to be in the A60 CPU module.

To Check the USB

Procedure

Connect a USB cable between controller PC and USB Interface port (USBTMC) on the rear panel of the E5063A. Turn the controller PC on. If the E5063A cannot detect the controller PC, the problems seems to be in the CPU module. Keysight I/O Library should be installed on the PC.

Performance Test failure Troubleshooting

This section describes the adjustment and troubleshooting procedures used when the E5063A fails the performance tests. If the performance of the instrument is critical for the test limits and seems adjustable, perform first the adjustment(s) related to the failed test. When the test result are far from the tolerance of the test or the performance is not adjustable, isolate the faulty assembly in accordance with the “Performance Test failure Troubleshooting” procedure.

Recommended Adjustment for Performance Test failure

Table 2 shows the recommended adjustments when the performance test fails. Select the adjustment program corresponding to the recommended adjustment and perform the adjustment.

You can execute the adjustment for Option 2H5 only. When the performance test fails on the unit with option 245 or 285, replace A1 board.

Table 2 Recommended adjustment for performance test failure

Failed Performance test item	Recommended Adjustment
Frequency Accuracy	PLL Sub-band Reference Frequency
RF Output Level Accuracy Test	PLL Sub-band Reference Frequency Source Max. Output Power Check Synthesizer Gain Source Output Power
RF Output Level Linearity Test	PLL Sub-band Reference Frequency Source Max. Output Power Check Synthesizer Gain Source Output Power

Table 2 Recommended adjustment for performance test failure

<p>Crosstalk & System Dynamic Range Test</p>	<p>PLL Sub-band Reference Frequency Source Max. Output Power Check Mixer Local Input Level Synthesizer Gain Receiver IF Flatness Source Output Power Receiver IF Range Receiver Port Characteristics Virtual Bridge Coefficient Receiver Absolute Gain</p>
<p>Trace Noise Test</p>	<p>PLL Sub-band Reference Frequency Source Max. Output Power Check Mixer Local Input Level Synthesizer Gain Receiver IF Flatness Source Output Power Receiver IF Range Receiver Port Characteristics Virtual Bridge Coefficient Receiver Absolute Gain</p>
<p>Uncorrected System Performance Test</p>	<p>PLL Sub-band Reference Frequency Source Max. Output Power Check Mixer Local Input Level Synthesizer Gain Receiver IF Flatness Source Output Power Receiver IF Range Receiver Port Characteristics Virtual Bridge Coefficient Receiver Absolute Gain</p>
<p>Dynamic Accuracy Test(1)</p>	<p>PLL Sub-band Reference Frequency Mixer Local Input Level Receiver IF Flatness Receiver IF Range Receiver Port Characteristics Virtual Bridge Coefficient Receiver Absolute Gain</p>

Table 2 Recommended adjustment for performance test failure

Dynamic Accuracy Test(2)	PLL Sub-band Reference Frequency Mixer Local Input Level Receiver IF Flatness Receiver IF Range Receiver Port Characteristics Virtual Bridge Coefficient Receiver Absolute Gain
Noise Floor	PLL Sub-band Reference Frequency Source Max. Output Power Check Mixer Local Input Level Synthesizer Gain Receiver IF Flatness Receiver IF Range Receiver Port Characteristics Virtual Bridge Coefficient Receiver Absolute Gain

Adjustment failure Troubleshooting

Replace the A1 Analog Module when any adjustment in diagnostic test is failed as the A1 module is only analog board which includes both source and receiver in the E5063A.

Performance Test failure Troubleshooting

Replace the A1 Analog Module when any adjustment in diagnostic test is failed as the A1 module is only one analog board which includes both source and receiver in the E5063A.

1 Troubleshooting

2 Post Repair Procedure

Post Repair Procedures 46

This chapter lists the procedures required to verify the E5063A operation after an assembly is replaced with a new one.

Post Repair Procedures

Table 3 lists the required procedures that must be performed after the replacement of an assembly. These are the recommended minimum procedures to ensure that the replacement is successfully completed.

Table 3 Post Repair Procedures

Replaced Assembly or Part	Required Adjustment Correction Constants (CC)	Verification
A11 Source Board	When you replace defective board with E5063-63001 or E5063-69001, it is not necessary to performing the adjustment. The boards are adjusted at factory. Correction Constant data is stored in A11 itself and uploaded to SSD automatically.	Troubleshooting Using Diagnostic Test 32 Perform all of the Performance Test.
A51 DSP Board	Perform the following required adjustments using "A51 DSP Board" in Spot Adjustment of the program.	Troubleshooting Using Diagnostic Test 32 Inspect the Booting Process
SSD (Solid State Drive)	Perform the following required adjustments using "HDD" in Spot Adjustment in the program. Copy from license file (.lic) under E:/license	Inspect the Booting Process

License file

The license code for the frequency option (either 245, 285 or 2H5) and generation ID (G01) must be installed in E:/license, or the error message will be displayed.

The license code can be downloaded from the Keysight Software Manager (ASM) or Keysight Software Licensing (ASL).

This information is subject to change without notice.

© Keysight Technologies 2014

Edition 2, November 2014



E5063-90100
www.keysight.com