

Agilent V3500A Handheld RF Power Meter

User's Guide



Agilent Technologies

Notices

© Agilent Technologies, Inc., 2010–2013

No part of this manual may be reproduced in any form or by any means (including electronic storage and retrieval or translation into a foreign language) without prior agreement and written consent from Agilent Technologies, Inc. as governed by United States and international copyright laws.

Manual Part Number

V3500-90001

Edition

Fifth Edition, April 5, 2013

Agilent Technologies, Inc.
5301 Stevens Creek Blvd.
Santa Clara, CA 95052 USA

Trademark Acknowledgements

Microsoft, Visual Studio, and Windows are U.S. registered trademark of Microsoft Corporation.

Pentium is a U.S. registered trademark of Intel Corporation.

Warranty

The material contained in this document is provided “as is,” and is subject to being changed, without notice, in future editions. Further, to the maximum extent permitted by applicable law, Agilent disclaims all warranties, either express or implied, with regard to this manual and any information contained herein, including but not limited to the implied warranties of merchantability and fitness for a particular purpose. Agilent shall not be liable for errors or for incidental or consequential damages in connection with the furnishing, use, or performance of this document or of any information contained herein. Should Agilent and the user have a separate written agreement with warranty terms covering the material in this document that conflict with these terms, the warranty terms in the separate agreement shall control.

Technology Licenses

The hardware and or software described in this document are furnished under a license and may be used or copied only in accordance with the terms of such license.

Restricted Rights Legend

U.S. Government Restricted Rights. Software and technical data rights granted to the federal government include only those rights customarily provided to end user customers. Agilent provides this customary commercial license in Software and technical data pursuant to FAR 12.211 (Technical Data) and 12.212 (Computer Software) and, for the Department of Defense, DFARS 252.227-7015 (Technical Data - Commercial Items) and DFARS 227.7202-3 (Rights in Commercial Computer Software or Computer Software Documentation).

Safety Notices

CAUTION









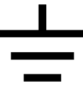



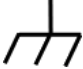
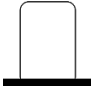


A **CAUTION** notice denotes a hazard. It calls attention to an operating procedure, practice, or the like that, if not correctly performed or adhered to, could result in damage to the product or loss of important data. Do not proceed beyond a **CAUTION** notice until the indicated conditions are fully understood and met.

WARNING

A **WARNING** notice denotes a hazard. It calls attention to an operating procedure, practice, or the like that, if not correctly performed or adhered to, could result in personal injury or death. Do not proceed beyond a **WARNING** notice until the indicated conditions are fully understood and met.

Safety Symbols

The following symbols on the instrument and in the documentation indicate precautions which must be taken to maintain safe operation of the instrument.

	Direct current (DC)		Equipment protected throughout by double insulation or reinforced insulation
	Alternating current (AC)		Off (supply)
	Both direct and alternating current		On (supply)
	Three-phase alternating current		Caution, risk of electric shock
	Earth (ground) terminal		Caution, risk of danger (refer to this manual for specific Warning or Caution information)
	Protective conductor terminal		Caution, hot surface
	Frame or chassis terminal		Out position of a bi-stable push control
	Equipotentiality		In position of a bi-stable push control

General Safety Information

The following general safety precautions must be observed during all phases of operation, service, and repair of this instrument. Failure to comply with these precautions or with specific warnings elsewhere in this manual violates safety standards of design, manufacture, and intended use of the instrument. Agilent Technologies assumes no liability for the customer's failure to comply with these requirements.

WARNING

- **Observe all markings on the instrument before connecting any wiring to the instrument.**
- **Do not operate the instrument in an explosive atmosphere or in the presence of flammable gases or fumes.**
- **Do not service or perform adjustments alone. Under certain condition, hazardous voltages may exist, even with the equipment switched off. To avoid dangerous electric shock, service personnel must not attempt internal service or adjustment unless another person, capable of rendering resuscitation or first aid, is present.**
- **Do not substitute parts or modify equipment to avoid the danger of introducing additional hazards. Return the instrument to Agilent Sales Office for service and repair to ensure the safety features are maintained.**
- **Do not operate damaged equipment as the safety protection features built into this instrument may have been impaired, either through physical damage, excessive moisture, or any other reason. Remove power and do not use the instrument until safe operation can be verified by service-trained personnel. If necessary, return the instrument to Agilent Technologies Sales and Service Office for service and repair to ensure the safety features are maintained.**

CAUTION

- Ensure proper insertion of battery in the power meter, and follow the correct polarity.
-

Environmental Conditions



This instrument is designed for indoor use and in an area with low condensation with use of standard or compatible test probes. The table below shows the general environment requirements for this instrument.

Environment conditions	Requirements
Operating environment	0°C to 50°C
Operating relative humidity	80% RH for temperature up to 35 °C, non-condensing
Storage environment	–10 °C to 70 °C
Altitude	Up to 2000 meters
Pollution degree	Pollution Degree 2

CAUTION

- The Agilent V3500A complies with the following safety and EMC requirements:
 - IEC 61326-2-1:2005/ EN 61326-2-1:2006
 - Canada: ICES-001:2004
 - Australia/New Zealand: AS/NZS CISPR11: 2004
- Degradation of some instrument specifications can occur in the presence of ambient electromagnetic (EM) fields and noise that are coupled to the powerline or I/O cables of the instrument. The instrument will self-recover and operate to all specifications when the source of ambient EM field and noise are removed or when the instrument is protected from the ambient EM field or when the instrument cabling is shielded from the ambient EM noise.

Regulatory Markings

	<p>The CE mark is a registered trademark of the European Community. This CE mark shows that the product complies with all the relevant European Legal Directives.</p>		<p>The C-tick mark is a registered trademark of the Spectrum Management Agency of Australia. This signifies compliance with the Australia EMC Framework regulations under the terms of the Radio Communication Act of 1992.</p>
<p>ICES/NMB-001</p>	<p>ICES/NMB-001 indicates that this ISM device complies with the Canadian ICES-001. Cet appareil ISM est conforme a la norme NMB-001 du Canada.</p>		<p>This instrument complies with the WEEE Directive (2002/96/EC) marking requirement. This affixed product label indicates that you must not discard this electrical or electronic product in domestic household waste.</p>

Waste Electrical and Electronic Equipment (WEEE) Directive 2002/96/EC

This instrument complies with the WEEE Directive (2002/96/EC) marking requirement. This affixed product label indicates that you must not discard this electrical or electronic product in domestic household waste.

Product Category:

With reference to the equipment types in the WEEE directive Annex 1, this instrument is classified as a "Monitoring and Control Instrument" product.

The affixed product label is as shown below.



Do not dispose in domestic household waste

To return this unwanted instrument, contact your nearest Agilent Technologies, or visit:

www.agilent.com/environment/product

for more information.

In This Guide...

1 Getting Started

This chapter introduces the key features of the V3500A Handheld RF Power Meter and prepares the power meter for initial setup.

2 Knowing your Instrument

This chapter specifies the characteristics, environmental conditions, and specifications of the V3500A Handheld RF Power Meter. This chapter contains a brief description of the instrument outlook, front panel operation, and front panel procedure.

3 Driver Installation and Commands

This chapter provides you the step-by-step programming driver installation procedure, remote USB operation, and basic drive commands of the V3500A Handheld RF Power Meter.

4 RF Measurement Basics

This chapter describes the RF measurement basics of the V3500A Handheld RF Power Meter.

5 Characteristics and Specifications

This chapter describes the instrument characteristics and specifications of the V3500A Handheld RF Power Meter.

Declaration of Conformity (DoC)

The Declaration of Conformity (DoC) for this instrument is available on the Web site. You can search the DoC by its instrument model or description.

<http://regulations.corporate.agilent.com/DoC/search.htm>

NOTE

If you are unable to search for the respective DoC, please contact your local Agilent representative.

THIS PAGE HAS BEEN INTENTIONALLY LEFT BLANK.

Contents

1 Getting Started

Introduction	2
Key features	3
Initial Inspection	3
Standard purchase items	3
Optional purchase items	4
Handling Precaution	4
Setting-up your Instrument	5
Connectivity	5
Power supply	8

2 Knowing your Instrument

Product at a Glance	10
Product dimensions	10
The front panel keypad	11
How to navigate the menu system	13
How to power on the V3500A	16
Front panel operations	17
Measuring power	17
Zeroing the power meter	18
Setting the input frequency	18
Setting the measurement speed	19
Enabling and disabling high-speed mode	19
Saving the instrument state	20
Recalling the instrument state	20
Setting units: dBm or watts	21
Controlling the backlight	22
Setting the backlight auto-shutoff interval	22

Using relative offset function 23

3 Driver Installation and Commands

System Requirements 26

Driver Installation 27

Installing USB driver 27

Installing USB driver (Windows 7) 33

Confirming USB driver installation 36

Uninstalling USB driver 37

Installing programming driver 38

Instrument Address 42

Remote USB Operation 43

Introduction 43

Bus connections 43

Remote USB commands 44

Basic driver commands 45

Basic V3500A commands 51

Averaging control commands 52

Measurement speed control commands 53

Unit of measurement commands 54

Relative Offset Commands 55

Miscellaneous commands 56

Examples 57

4 RF Measurement Basics

Power Definition 78

Units of Measurement 80

Watts 80

Decibels 80

RF power measurement 81

Low frequency method 81

High frequency method	81
Power of various types of signals	83
Measurement accuracy	85

5 Characteristics and Specifications

Product Characteristics	90
Product Specifications	92
SWR	94

THIS PAGE HAS BEEN INTENTIONALLY LEFT BLANK.

List of Figures

- Figure 1-1 V3500A Handheld RF Power Meter with backlight turned on 2
- Figure 1-2 V3500A with Type-N connector nut 5
- Figure 1-3 Full serial number, USB type mini-B port, and external power connector 7
- Figure 2-1 V3500A dimensions 10
- Figure 2-2 V3500A front panel keypad 11
- Figure 2-3 Menu map structure 13
- Figure 4-1 Low frequency power measurement 81
- Figure 4-2 High frequency power measurement 82
- Figure 4-3 Example of pulse-modulated signals 84
- Figure 4-4 Mismatch in power measurements 86
- Figure 5-1 Typical SWR performance 94

THIS PAGE HAS BEEN INTENTIONALLY LEFT BLANK.

List of Tables

Table 2-1	V3500A keypad functions	11
Table 2-2	Menu map structure description	14
Table 3-1	SETAVG command values	52
Table 5-1	SWR performance for different frequency band	94

THIS PAGE HAS BEEN INTENTIONALLY LEFT BLANK.



1 Getting Started

Introduction	2
Key features	3
Initial Inspection	3
Standard purchase items	3
Optional purchase items	4
Handling Precaution	4
Setting-up your Instrument	5
Connectivity	5
RF connector	5
USB port	7
Power supply	8

This chapter introduces the key features of the V3500A Handheld RF Power Meter and prepares the power meter for initial setup.



Introduction

The Agilent V3500A Handheld RF Power Meter, 10 MHz to 6 GHz is a compact handheld instrument designed for making RF power measurements in both the field as well as research and development (R&D) laboratory environments. In the laboratory, the V3500A can be used as an RF power data logger by transferring data through its built-in USB interface to a computer, allowing you to perform trend or drift analysis. For use in the field, the compact size of the V3500A allows it to be placed in a toolkit. You do not have to carry both a power meter and a separate sensor module (the V3500A has a built-in sensor) when conducting measurement in the field.



Figure 1-1 V3500A Handheld RF Power Meter with backlight turned on

Key features

- Easy to use interface with LCD display
- Economical single-function instrument
- Wideband (10 MHz to 6 GHz) average RF power measurements
- Compact size with a built-in display and sensor
- Universal Serial Bus (USB) control interface
- Flexibility of drawing operating power from an on-board battery, an optional external power supply, or a computer via the USB interface

Initial Inspection

When you receive your instrument, inspect the instrument for any obvious damage such as broken terminals or cracks, dents, and scratches on the casing that may occur during shipment.

If any damage is found, notify the nearest Agilent Sales Office immediately. The front of this manual contains the warranty information.

Standard purchase items

Verify that you have received the following items with your V3500A instrument. If anything is missing or damaged, please contact the nearest Agilent Sales Office.

- ✓ USB interface cable (Standard-A to Type-B), 2.5 meter
- ✓ Printed Agilent V3500A Handheld RF Power Meter, 10 MHz to 6 GHz User's Guide (English)
- ✓ Agilent V3500A Product Reference CD-ROM

Optional purchase items

- ✓ Power supply (V3500A-PWR)
- ✓ Holster carrying case with shoulder strap (V3500A-SHL)
- ✓ USB interface cable (Standard-A to Type-B), 2.5 meter (V3500A-CA1)
- ✓ Printed Agilent V3500A Handheld RF Power Meter, 10 MHz to 6 GHz User's Guide (Japanese) (V3500A-ABJ)
- ✓ Printed Agilent V3500A Handheld RF Power Meter, 10 MHz to 6 GHz User's Guide (Simplified Chinese) (V3500A-AB2)
- ✓ Printed Agilent V3500A Handheld RF Power Meter, 10 MHz to 6 GHz User's Guide (English) (V3500A-ABA)

Keep the original packaging in case the V3500A has to be returned to Agilent in the future. Also, include a brief description of the problem.

Handling Precaution

To maintain high-impedance isolation, ensure that the V3500A is handled carefully to avoid contamination from foreign materials such as body oil. Such contamination can reduce isolation resistance.

To avoid possible contamination, do not touch connector insulators. If the instrument becomes contaminated, it should be thoroughly cleaned. Refer to *Agilent V3500A Handheld RF Power Meter, 10 MHz to 6 GHz Service Guide* for more information.

Setting-up your Instrument

Connectivity

You need to set-up the RF connector and USB port connections properly before making any measurements.

RF connector

Use the Type-N male RF connector with $50\ \Omega$ characteristic impedance (see [Figure 1-2](#)) to make RF signal connections.



Figure 1-2 V3500A with Type-N connector nut

Be sure to follow the following guidelines when making connections.

- ✓ **Maximum input power limitations**

Do not connect or apply any power level that is outside of the V3500A specifications. See “[Product Specifications](#)” on page 92 for a complete list of specifications.

- ✓ **Connection for a power measurement**

While holding the body of the power meter in one hand, turn the Type-N male connector nut to tighten the connection (do not turn the body of the V3500A). Continue to do so until the connection is hand-tight. It is important to turn the nut of the connector rather than the body of the power meter when tightening the connection.

NOTE

When connecting the Type-N connector of the V3500A to a Type-N female connector for a power measurement, observe proper practice for tightening the connection.

USB port

The V3500A has a USB 2.0 interface with mini-B port (see [Figure 1-3](#)). The V3500A can be remotely programmed over this USB interface.

In addition to remote programming, the V3500A can be powered by the USB port regardless of whether the batteries are present or connected to the external power supply (V3500A-PWR).

NOTE

The interface is USB 2.0 compatible with an interface speed of 12 Mbps.

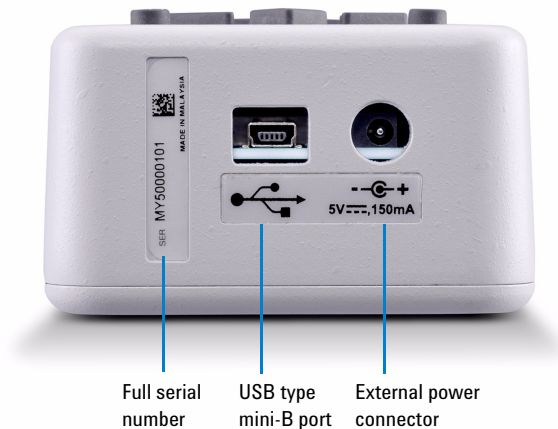


Figure 1-3 Full serial number, USB type mini-B port, and external power connector

Power supply

You can use either the battery power or the external power connector to power on your V3500A.

- Battery power

The V3500A can be powered by two AA batteries. If installed, the batteries will power the V3500A only if the external power supply and USB are not connected.

Refer to *Agilent V3500A Handheld RF Power Meter, 10 MHz to 6 GHz Service Guide* for more information.

- External power connector

The external power connector provides a connection for the optional external power supply (Model V3500A-PWR) (see [Figure 1-3](#)). If the external power supply is connected, the V3500A will be powered by the external power supply – regardless of whether the USB power or batteries are present.

CAUTION

Only connect the optional external power supply (V3500A-PWR) recommended to this connector. Instrument damage may result if improper power is applied.

The power supply is equipped with an AC line filter and provides a conditioned +5 VDC, 150 mA power source for the V3500A.



2 Knowing your Instrument

Product at a Glance	10
Product dimensions	10
The front panel keypad	11
How to navigate the menu system	13
How to power on the V3500A	16
Front panel operations	17
Measuring power	17
Zeroing the power meter	18
Setting the input frequency	18
Setting the measurement speed	19
Enabling and disabling high-speed mode	19
Saving the instrument state	20
Recalling the instrument state	20
Setting units: dBm or watts	21
Controlling the backlight	22
Setting the backlight auto-shutoff interval	22
Using relative offset function	23

This chapter specifies the characteristics, environmental conditions, and specifications of the V3500A Handheld RF Power Meter. This chapter contains a brief description of the instrument outlook, front panel operation, and front panel procedure.



Product at a Glance

Product dimensions



Figure 2-1 V3500A dimensions




The front panel keypad

Figure 2-2 shows the location of the front panel keypad. Refer to Table 2-1 for front panel key description and usage.







Figure 2-2 V3500A front panel keypad

Table 2-1 V3500A keypad functions

Key	Description
ZERO 	Press ZERO to measure the offset voltages in the signal path and zero the V3500A. This allows a more accurate measurement at low power levels. The V3500A RF input may be left disconnected when it is zeroed, or it may be connected to other hardware, but make sure that no signals are present on the RF input as this results in inaccurate readings. For example, if the V3500A is connected to a signal generator, turn off the signal generator's output before pressing the ZERO keypad. When the V3500A is zeroed, the display will show "Zeroing.....". The entire operation will take approximately 30 seconds.
FREQUENCY 	Press FREQUENCY to set the V3500A to the frequency of the input signal. There are two keypads for adjusting the frequency. The left arrow key decrements the present frequency in 10 MHz steps. Likewise, the right arrow key increments the present frequency in 10 MHz steps. The present frequency is displayed on the second line of the display. Pressing and holding one of the frequency keys down will change the frequency setting rapidly.
ON/OFF 	Press ON/OFF to turn on or turn off the V3500A.

2 Knowing your Instrument

Table 2-1 V3500A keypad functions (continued)

Key	Description
	<p>Press MENU to enter the menu mode. The four arrow keypads are active in menu mode only. When the V3500A is in normal mode, the four arrow keypads are inactive.</p> <p>The up and down menu keypads select different menus. For example, these keypads can be used to change from the "Averaging" menu to "Units" menu.</p> <p>The left and right menu keypads allow users to adjust the settings in a given menu. For example, in the "Averaging" menu, these keys are used to select the number of averages performed by the V3500A.</p>
<p>HOLD</p> 	<p>Under normal mode, the V3500A power reading is updated continuously. In some cases, this may be undesirable. For example, the V3500A might be connected to a signal source in a location that makes it difficult to read the display. Press HOLD for the most recent reading to be frozen on the display and is no longer updated. This allows the user to disconnect the V3500A from the source and then read the display. Press HOLD again to disable the hold function and the display will once again be updated continuously. When the hold function is enabled, the letter "H" is displayed on the upper right-hand corner of the display.</p>
	<p>Press MENU to access any functions that are not available to the user directly from the front panel keypad. It also allows users to enter or exit the V3500A menus. Press MENU once causes the power display to be replaced with the menu display. The menu can be navigated with the menu navigation keypads. Press MENU again to exit the menu mode and the display will return to normal mode.</p>
<p>BACKLIGHT</p> 	<p>The V3500A display and keypads are backlit to allow visibility in dark environments.</p> <p>Press BACKLIGHT to turn on and off the LCD backlight display and keypads. In order to conserve battery power, the backlight will automatically be turned off after one minute delay (default setting). You can change the delay setting using the V3500A menus.</p>

How to navigate the menu system

NOTE

There is no “enter” keypad to activate a particular menu selection. Once the left or right menu keypads are used to select one of the choices in a menu, that choice is automatically activated.

Press **MENU** to toggle the display between normal and menu mode. Use the four arrow keypads surrounding the **MENU** keypad to navigate and make selections while in menu mode. Use the up and down menu arrow keypads to scroll through the available menus and make a selection.

The left and right menu arrow keypads are used to select available choices in menu mode. All menu commands are executed immediately when the choice is selected.

The menu map structure is shown in [Figure 2-3](#) and the description is shown in [Table 2-2](#). The menu items in <> brackets are the default menu values.

Averaging	<Off> 2 4 8 16 32
Units	<dBm> Watts
Shutdown	1m 5m 30m 1hr <Never>
BacklightOff	<1m> 5m 10m 20m Never
Contrast	0% 10% 20% 30% 40% <50%> 60% 70% 80% 90% 100%
Save State	<No> Save
Recall State	<No> Recall
Meas mode	<Norm> Fast
Firmware Rev	V1.0.8
Serial Num	12345678
Rel Offset	<Off> On

Figure 2-3 Menu map structure

2 Knowing your Instrument

Table 2-2 Menu map structure description

Menu	Description	Available Values	Default values
Averaging	Sets the averaging value.	Off, 2, 4, 8, 16, 32	Off
Units	Sets the measurement unit. Refer to “Setting units: dBm or watts” on page 21.	dBm, Watts	dBm
Shutdown	Sets the auto-shutoff interval. Refer to “Setting the backlight auto-shutoff interval” on page 22.	1m, 5m, 30m, 1hr, Never	Never
BacklightOff	Sets the duration prior to the backlight turning off automatically. Refer to “Controlling the backlight” on page 22.	1m, 5m, 10m, 20m, Never	1m (1 minute)
Contrast	Sets the LCD display contrast.	0%, 10%, 20%, 30%, 40%, 50%, 60%, 70%, 80%, 90%, 100%	50%
Save State	Enables or disables the save state. Refer to “Saving the instrument state” on page 20.	No, Save	No
Recall State	Enables or disables the recall state. Refer to “Recalling the instrument state” on page 20.	No, Recall	No
Meas mode	Selects between normal or fast mode. Refer to “Enabling and disabling high-speed mode” on page 19.	Norm, Fast	Norm
Firmware Rev	Shows the firmware revision used in the instrument.	–	–
Serial Num ^[1]	Shows the numerical serial number of the instrument (without prefix).	–	–
Rel Offset	Allows users to apply an offset value to the measurement. Refer to “Using relative offset function” on page 23.	Off, On	Off

^[1] The numerical serial number displayed on the instrument is for reference only. For full serial number (with prefix), please refer to the printed label shown in [Figure 1-3](#) on page 7.

Examples on how to navigate the menu system

- 1 Press down arrow keypad to change the active menu from “AVERAGING” to “UNITS” menu.
- 2 In the “AVERAGING” menu, the left and right menu keypads can turn averaging “Off” or select 2, 4, 8, 16, or 32 averages. If the present selection is <2>, and the right menu key is pressed, the active selection will be changed to <4> immediately.

How to power on the V3500A

Use the **ON/OFF** keypad to turn on or turn off the V3500A. While operating on battery power, the V3500A has a power auto-shutoff feature to preserve battery life. This feature automatically turns the power meter off after a certain duration. By default, the auto-shutoff feature time is disabled.

NOTE

The “SHUTDOWN” menu allows you to change the auto-shutoff interval.

Setting the power auto-shutoff interval

- 1 Press **MENU** to enter menu mode.
- 2 The menu system map as shown in [Figure 2-3](#) will be shown.
- 3 Scroll using the down arrow key until “Shutdown” is displayed.
- 4 Select your desired time-out interval using the left or right menu keypads.

NOTE

To disable the auto-shutoff function, select **<Never>** for the time-out interval under “Shutdown” menu.

Front panel operations

The V3500A Handheld RF Power Meter can be operated and programmed using the front panel. All commands and functions accessible through USB can also be accessed from the front panel.

Measuring power

Use the following procedure to measure the power of a signal with the best accuracy.

- 1 Set frequency reading.
Press left or right **FREQUENCY** keypads as needed to set an appropriate frequency. The V3500A can be set from 10 MHz to 6000 MHz in 10 MHz increments.

NOTE

The instrument returns to the default frequency value setting of 500 MHz after the instrument is turned off.

- 2 Zero the V3500A.
Refer to [“Zeroing the power meter”](#) on page 18 for more information.
- 3 Connect the V3500A RF input port to the signal to be measured. Refer to [“RF connector”](#) on page 5 for more information.

The top line of the display shows the measured power of the signal. The measured power will be updated continuously and displayed accordingly.

In the upper right-hand corner of the display, an “at” symbol (@) is displayed whenever a new measurement is completed and the results have been displayed. If this symbol changes to the letter “H”, the V3500A will hold the present reading (the instrument is in hold mode). Press **HOLD** to return to normal mode.

Zeroing the power meter

Zeroing the power meter improves the measurement accuracy of the V3500A significantly, especially at low power levels. After the power meter is turned on, you should always perform zeroing prior to making any measurements. The V3500A should be zeroed when it warms up, and periodically when the ambient temperature changes.

- 1 Prior to zeroing the V3500A, make sure all the RF power is removed from the V3500A RF input port. This can be done by disconnecting the RF input, or by disabling the output of any signal sources connected to V3500A.
- 2 Once all RF power is removed from the V3500A RF input port, press **ZERO**. The V3500A will display the message “Zeroing...” during the zeroing process. When the display returns to normal mode, zeroing is complete and measurements can be made.

Setting the input frequency

NOTE

The instrument returns to the default frequency value setting of 500 MHz after the instrument is turned off.

The V3500A has an internal calibration table that corrects for frequency response variations of its circuitry. For best accuracy, set the input signal frequency correctly.

- 1 Press **FREQUENCY** to set the input frequency. The left arrow decreases the frequency, and the right arrow increases the frequency value. The present frequency setting is displayed on the second line of the display when the display is in normal mode.
- 2 Holding either the left or right keypad down will cause the frequency to decrease or increase rapidly, allowing the user to quickly set the frequency to the desired value.

Setting the measurement speed

In normal operation speed, the V3500A will complete a power measurement in about 1 second (± 0.5 second depending on the power level of the input signal). Lower level signals take longer to measure than higher level signals. This is due to the fact that more filtering is required to get a good signal-to-noise ratio when measuring low-level signals.

If faster measurements are required, set the V3500A to high-speed mode. In this mode (for measurements greater than -30 dBm) the V3500A can make approximately 23 measurements per second.

In most cases, the normal measurement speed is the best choice. Measurement data filtering is greatly reduced in high-speed mode, resulting in significantly higher measurement noise than in normal mode.

Enabling and disabling high-speed mode

NOTE

The instrument returns to the default “Meas mode” setting of <Norm> when the instrument is turned off.

- 1 Press **MENU** to enter menu mode.
- 2 Scroll using the down menu arrow keypad until “Meas mode” menu is displayed.
- 3 Press the left or right menu arrow keypad to select the desired measurement speed mode. There are two available options:
 - <Norm>: Selects normal measurement speed mode
 - <Fast>: Selects high-speed mode

Saving the instrument state

NOTE

- The default “Save State” menu setting is <No>. Saving the state of the instrument places all menu values in the memory of the instrument so that it can be recalled after the cycling power. Frequency settings are not saved or recalled.
 - The “Save State” feature is only functional when the batteries are stored in the instrument.
-

- 1 Press **MENU** to enter menu mode.
- 2 Scroll using the down menu arrow keypad until “Save State” menu is displayed.

CAUTION

All menu commands are executed immediately when the choice is selected. Therefore, the Save State command is implemented as soon as the <Save> menu item is highlighted. There is no undo option— as soon as the <Save> menu item is selected, the current menu setting overwrite the previously saved settings.

- 3 Use the right arrow menu keypad to select <Save>. This will save the instrument state in the non-volatile memory of the V3500A.

Recalling the instrument state

NOTE

The default “Recall State” menu setting is <No>. Recalling the instrument state restores all stored menu values in the V3500A non-volatile memory. Frequency settings are not recalled.

- 1 Press **MENU** to enter menu mode.
- 2 Scroll using the down menu arrow keypad until “Recall State” menu is displayed.

CAUTION

All menu commands are executed immediately when the choice is selected. Therefore, the Recall State command is implemented as soon as the <Recall> menu item is highlighted. There is no undo option — as soon as the <Recall> menu item is selected, the saved menu setting overwrite the present settings.

- 3 Use the right arrow menu keypad to select <Recall>. This will recall the instrument state in the non-volatile memory of the V3500A.

Setting units: dBm or watts

NOTE

- When operating the V3500A in Watts mode using the front panel, it will display nW, μ W, mW, or W accordingly.
 - The instrument returns to the default dBm instrument after the instrument is turned off.
-

Refer to “Units of Measurement” on page 80 for information on dBm and watts.

- 1 Press **MENU** to enter menu mode.
- 2 Scroll using the down menu arrow keypad until “Units” menu is displayed.
- 3 Use the left or right arrow menu keypad to select your desired units, either <dBm> or <Watts>.

Controlling the backlight

The V3500A LCD display and keypads are backlit to allow visibility in dark environments. Press **BACKLIGHT** to turn on and off the backlight LCD display and keypads. The backlight will automatically be turned off after a certain length of time to preserve the battery life. The default time is one minute.

Setting the backlight auto-shutoff interval

NOTE

The instrument returns to the default “BacklightOff” menu setting of <1m> when the instrument is turned off.

- 1 Press **MENU** to enter menu mode.
- 2 Scroll using the down menu arrow keypad until “BacklightOff” menu is displayed.
- 3 Use the left or right arrow menu keypad to select your desired time interval. Select <Never> to disable the backlight’s auto-shutoff.

Using relative offset function

The relative offset function allows you to apply an offset value to the measurement. The relative offset values range from -99.99 dB to +99.99 dB with 0.01 dB resolution. When the relative offset function is turned on, the displayed power is limited to ± 99.99 dBm and 999.99 W.

Turning on the relative offset function

When “Rel Offset” is enabled, a flashing letter “O” is displayed on the upper right-hand corner of the V3500A.

- 1 Press **MENU** to enter menu mode.
- 2 Scroll using the down menu arrow until “Rel Offset” menu is displayed.
- 3 Use the right arrow menu keypad to select the <On> function from the submenu. Enter a relative offset value using steps shown in [Entering a relative offset value](#).
- 4 Press **MENU** to exit.

Entering a relative offset value

- 1 From the “Rel Offset” menu, use the right arrow menu keypad to select <Edit>. Notice that the up, down, left, and right arrow keypads are enabled.
- 2 Use any of the up, down, left, or right arrow keypads to edit the individual digits of the relative offset value and store the value.
- 3 Use the up and down arrow keypads to change the sign of the relative offset positive (+) or negative (-) value.
- 4 Press **MENU** to exit and store the relative offset value entered. The relative offset value entered will be applied to the measurement reading on the V3500A.

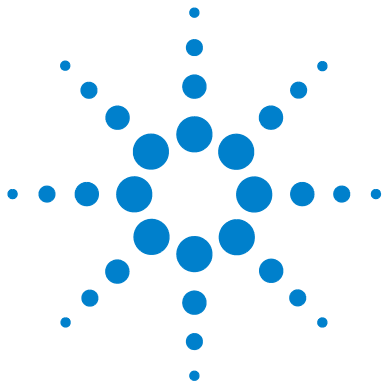
When the relative offset value function is enabled and the value is stored in the V3500A, the letter “O” will flash on the upper right-hand corner of the display. When the relative offset value is entered as 0.0, the “@” character will flash on the upper right-hand corner of the display, indicating that the relative offset function is not enabled.

NOTE

Powering the V3500A on or off erases any relative offset values entered.

Turning off the relative offset function

- 1 Press **MENU** to enter menu mode.
- 2 Scroll using the down menu arrow until “Rel Offset” menu is displayed.
- 3 Use the right arrow menu keypad to select the <Off> function.
- 4 Press **MENU** to exit. The “@” character will flash on the upper right-hand corner of the display, indicating that the relative offset function is turned off.



3 Driver Installation and Commands

System Requirements	26
Driver Installation	27
Installing USB driver	27
Installing USB driver (Windows 7)	33
Confirming USB driver installation	36
Uninstalling USB driver	37
Installing programming driver	38
Instrument Address	42
Remote USB Operation	43
Introduction	43
Bus connections	43
Remote USB commands	44
Basic driver commands	45
Basic V3500A commands	51
Averaging control commands	52
Measurement speed control commands	53
Unit of measurement commands	54
Relative Offset Commands	55
Miscellaneous commands	56
Examples	57

This chapter provides you the step-by-step programming driver installation procedure, remote USB operation, and basic drive commands of the V3500A Handheld RF Power Meter.



System Requirements

Prior to any installation, please ensure that your PC meets the following minimum system requirements.

Processor	1.6 GHz Pentium® IV or higher
Operating System	Any one of the following Microsoft® Windows® versions: <ul style="list-style-type: none">• Windows 2000 Professional (Service Pack 4) or later• Windows XP Professional or Home edition (Service Pack 1) or later• Windows Vista• Windows 7
Browser	Microsoft® Internet Explorer 5.01 or higher
Available Hard Disk Space	1 GB
Available RAM	512 MB or higher is recommended
Video	Super VGA (800x600) 256 colors or higher

Driver Installation

The V3500A drivers support the following Microsoft® operating systems:

- Windows® 7
- Windows Vista
- Windows XP
- Windows 2000

Verify that your PC meets the minimum system requirements as stated under “[System Requirements](#)” on page 26. Follow the steps below to install the V3500A programming drivers.

NOTE

The **setup.exe** file will automatically checks and installs the Microsoft.Net Framework if it is not installed in your PC.

Installing USB driver

USB driver installation allows you to install the low-level drivers that set-up the physical communication link between the V3500A and the PC.

- 1 Execute the file name **setup.exe** to install the V3500A software driver.
- 2 Connect the USB cable between the V3500A instrument and your PC. Then, connect the V3500A instrument to the required AC power and turn the instrument on.

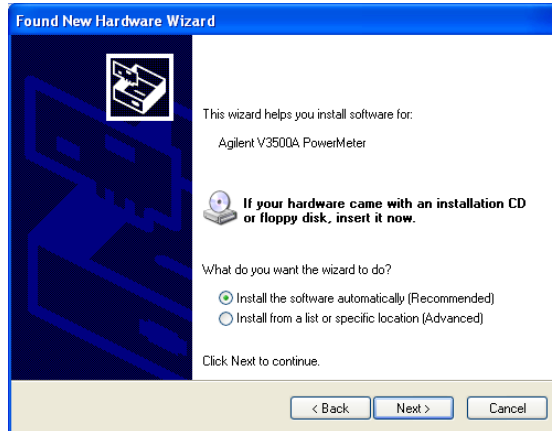
- 3 Your PC will automatically detect the connected instrument and the **Welcome to the Found New Hardware Wizard** window will appear. Select **No, not this time** and click **Next** to proceed.



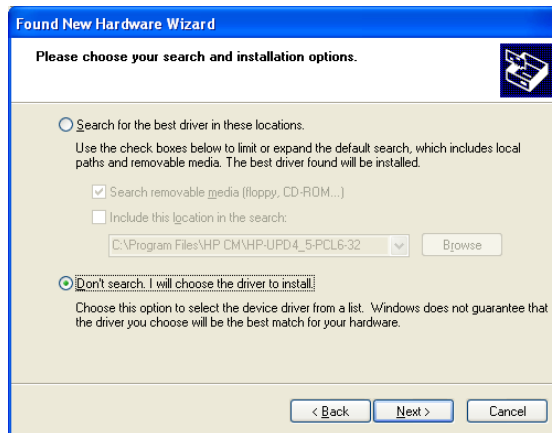
NOTE

- The V3500A should automatically be turned on when connected to the USB port of the PC. Turn the instrument on manually if it is not powered on.
- If the **Welcome to the Found New Hardware Wizard** window does not appear, cycle the power of the V3500A.
- For Windows 7, the PC will not be able to automatically detect the connected instrument. Refer to “[Installing USB driver \(Windows 7\)](#)” on page 33 for more information on installing the driver in Windows 7.

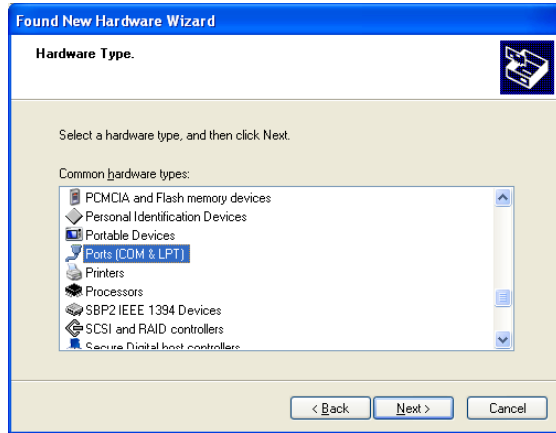
- 4 Select **Install from a list or specific location (Advanced)** and click **Next**.



- 5 Select **Don't search, I will choose the driver to install.** and click **Next**.



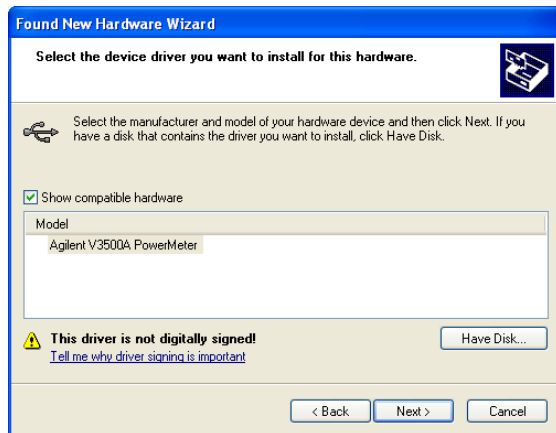
- 6 Scroll down and select **Ports (COM & LPT)** for the Hardware Type and click **Next**.



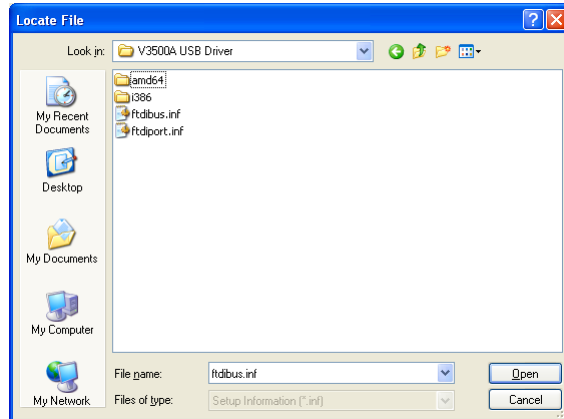
NOTE

The above screen may not be displayed on every install. If you do not see this screen, skip to the next step.

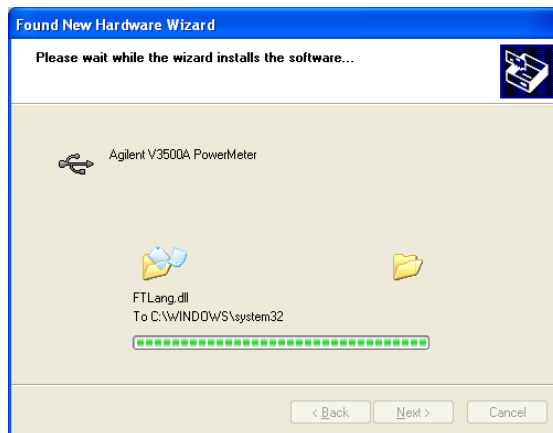
- 7 Click **Have Disk...**



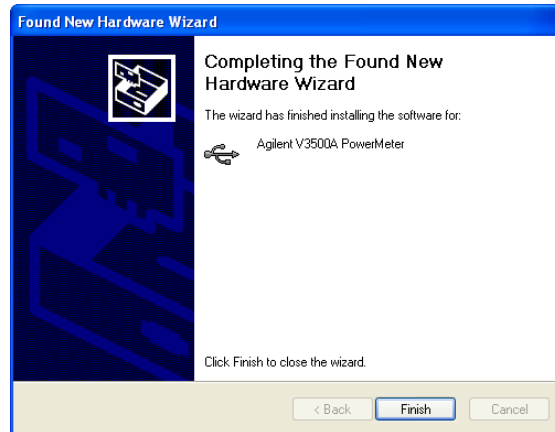
- 8 Click **Browse** to locate the **V3500A USB Driver** folder. Select the file name **ftdibus.inf**, and then click **Open**.



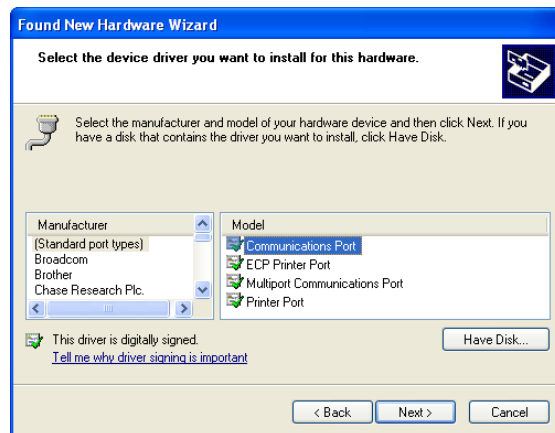
- 9 Click **OK**. Then, ensure that the name of your Agilent instrument is selected before you click **Next**.
- 10 A warning message will appear on the **Hardware Installation** window. Click **Continue Anyway** to proceed with the installation.
- 11 If you get a series of following screens, click **No** so that you do not overwrite newer files.
- 12 You will see the installation progress window.



- 13 Once the installation is completed, you will see the **Completing the Found New Hardware Wizard** window. Click **Finish** to complete the installation.



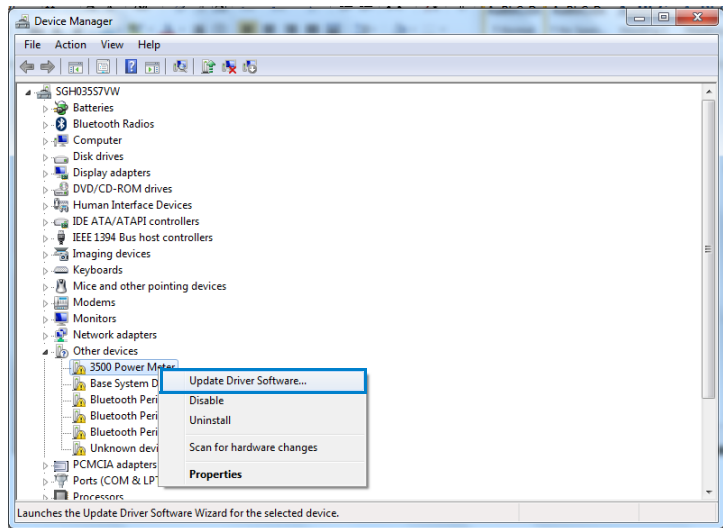
- 14 To install the USB driver that works like a COM port (virtual COM port), repeat [step 3](#) to [step 6](#). Then, click **Have Disk...**



- 15 Click **Browse** to locate the **V3500A USB Driver** folder. Select the file name **ftdiport.inf**, and then click **Open**.
- 16 Repeat [step 9](#) to [step 12](#) to complete the virtual COM port driver installation.

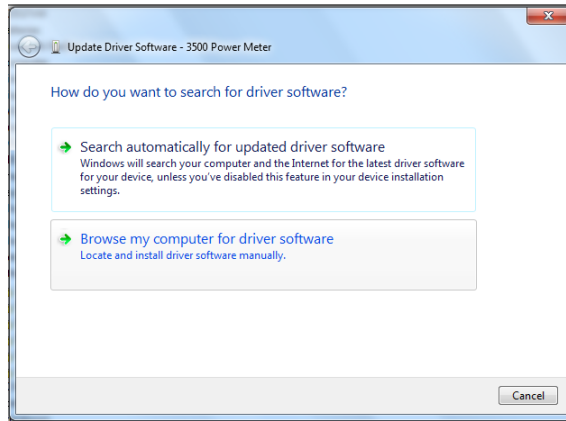
Installing USB driver (Windows 7)

- 1 To install the driver for the connected instrument, go to **Run** (search from the Windows Start menu) and type `devmgmt.msc`. Click **OK**.
- 2 The Device Manager window will appear. Select **Other devices** and right-click **3500 Power Meter** as shown below.

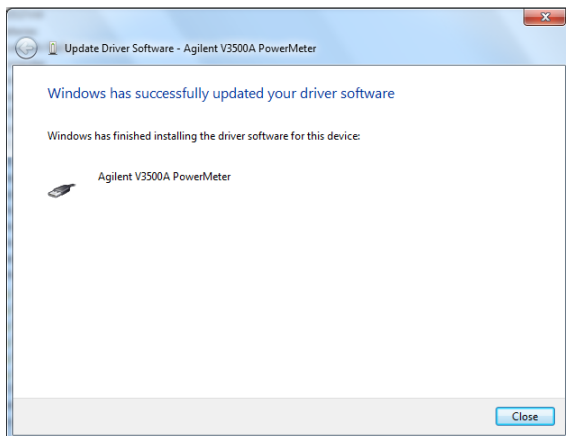


- 3 Click **Update Driver Software...** and the **Update Driver Software** window will appear.

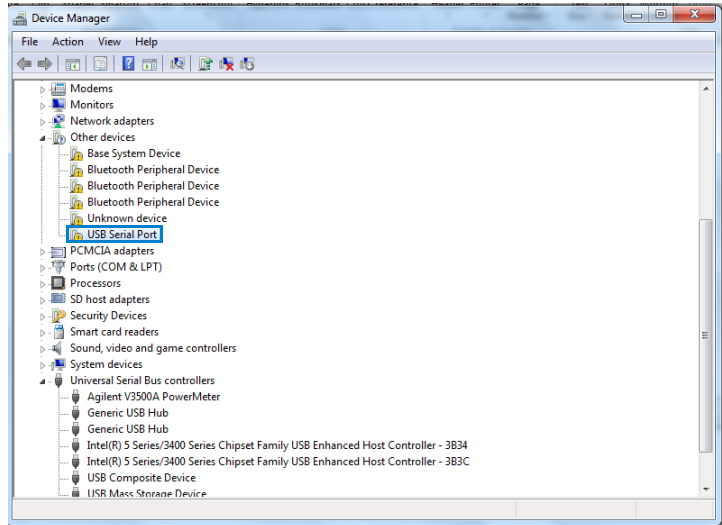
3 Driver Installation and Commands



- 4 Click **Browse the computer for driver software** to locate the V3500A USB Driver folder. Select the folder **KI RF Instruments USB Driver**, and then click **OK**.
- 5 A warning message will appear on the **Windows Security** window. Click **Install this driver software anyway** to proceed with the installation.
- 6 Once the installation is completed, you will see the **Windows has successfully updated your driver software** window. Click **Close** to complete the installation.

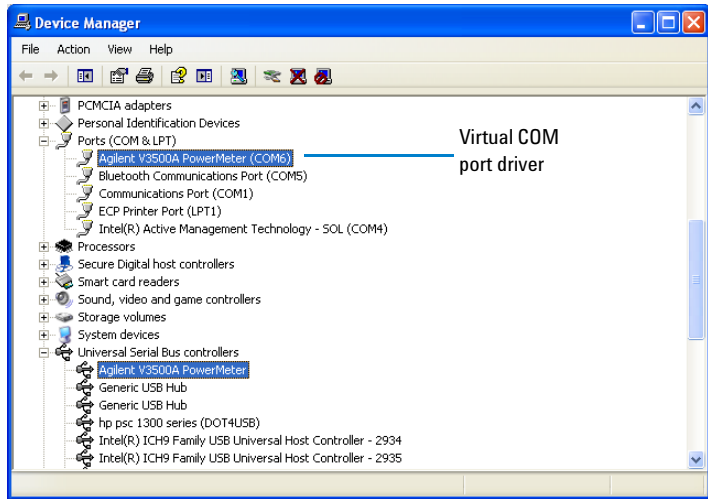


- 7 Go to the Device Manager window. Select **Other devices** and right-click **USB Serial Port**. Repeat [step 3](#) to [step 6](#) for the driver installation.



Confirming USB driver installation

- 1 To confirm the USB driver installation is complete, go to **Start > Run** (on the Windows Start menu) and type `devmgmt.msc`. Click **OK**.
- 2 The Device Manager window will appear. Scroll down to **Ports (COM & LPT)** and **Universal Serial Bus controllers** to confirm the drivers are installed and present.

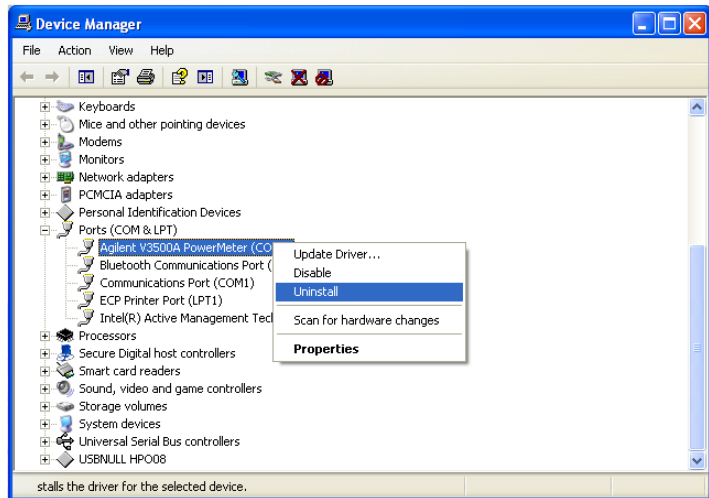


NOTE

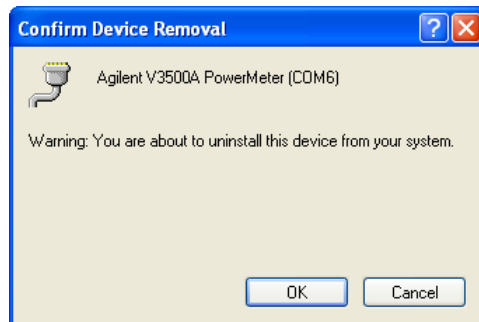
If you are using multiple Agilent instruments, you may wish to unplug all but one, to ascertain the COM port number used by a particular instrument. You may also differentiate similar instruments by right-clicking on the device, viewing the Properties and the serial number of the instrument.

Uninstalling USB driver

- 1 To uninstall the USB driver, go to **Start > Run** (on the Windows Start menu) and type `devmgmt.msc` Click **OK**.
- 2 To uninstall the USB driver for the virtual COM port, scroll down to **Ports (COM & LPT)** and find the device for your instrument.
- 3 Right-click on the device and select **Uninstall**.



- 4 The **Confirm Device Removal** window will appear. Click **OK** to remove the driver.



- 5 To uninstall the USB driver for the Universal Serial Bus controller, scroll down to **Universal Serial Bus controllers** and find the device for your instrument.
- 6 Right-click on the device and select **Uninstall**.
- 7 The **Confirm Device Removal** window will appear. Click **OK** to remove the driver.

Installing programming driver

Programming driver installation allows you to install the high-level drivers that manage the USB interface and facilitate programming of the V3500A.

In order for your program to be able to communicate with the programming driver, it must be able to find the appropriate DLL. The method used to find the appropriate DLL is dependent on the software used to create your programs. Refer to the relevant sections below for further information.

- [When using Microsoft Visual Studio.NET](#)
- [When using Microsoft Visual Studio 6.0](#)

When using Microsoft Visual Studio.NET

In the installation directory, find the file name “**AgilentV3500A.dll**” and add a reference to this file in your project. The default setup places the AgilentV3500A.dll file in the following folder: C:\Program Files\Agilent\Agilent V3500A Driver. Refer to [Adding a reference \(Microsoft Visual Studio.NET\)](#) for more information.

NOTE

An alternative method would be to place a local copy of the AgilentV3500A.dll in your project directory and add a reference to this copy. If this alternative method is used, and an updated driver for the V3500A is later installed, the local copy in the project directory will not be updated (it will remain the earlier version of the driver).

- Advantage: when updating the V3500A driver, this method removes the risk that updating the V3500A driver that will break your software.
- Disadvantage: when updating the V3500A driver, this method requires manual replacement of a copy of the new AgilentV3500A.dll in your project directory and also rebuilding code to take advantage of the new driver.

Adding a reference (Microsoft Visual Studio.NET)

The following procedure outlines how to add a reference while using Microsoft Visual Studio.NET. Adding a reference in other programming languages is similar.

- 1** In Microsoft Visual Studio.NET, select the desired project.
- 2** Under **View** menu, select **Solution Explorer** (alternatively, press **Ctrl-Alt-L**).
- 3** In the **Solution Explorer**, click + sign next to the project to expand the project if necessary.
- 4** Right click **References** and click **Add References** to add the Reference.
- 5** In the **Add Reference** window, use **Browse** to locate the directory where the V3500A programming driver AgilentV3500A.dll is stored.
- 6** Double-click the AgilentV3500A.dll component.
- 7** Click on **OK** in the **Add Reference** window. AgilentV3500A should now appear under **References** in the **Solution Explorer** window.

When using Microsoft Visual Studio 6.0

The procedures for referencing the DLL differ for Visual Basic 6.0 and Visual C++ 6.0.

NOTE

In Microsoft Visual Studio 6.0, the AgilentV3500A.tlb file must be referenced in its install location — a reference to a local copy placed in your project directory cannot be used.

Adding a reference (Visual Basic 6.0)

- 1 Select **Reference** menu in your Visual Basic 6.0 project under **Project** menu. The References dialog box will open.

NOTE

The default setup places the AgilentV3500A.tlb file in the following folder:
C:\Program Files\Agilent\Agilent V3500A Driver.

- 2 Use **Browse** to locate the installation directory.
- 3 Select “**AgilentV3500A.tlb**”.
- 4 Click **Open**.
- 5 Verify that the V3500A driver has been added (is checked).
- 6 Click **OK**.

Adding a reference (Microsoft Visual C++ 6.0)

To add the reference in Visual C++ 6.0, make sure the program contains the following line (no other special steps are required to add the reference):

```
#import "C:\Program Files\Agilent\Agilent  
V3500A Driver\AgilentV3500A.tlb"  
  
no_namespace named_guids
```

NOTE

The above line is correct for an installation in the default directory. If installed in a different directory, modify the statement accordingly.

Instrument Address

When performing remote programming, the V3500A serial number is used as the unique address of the instrument. You can find the serial number of your instrument using one of the following methods:

- 1** Find the serial number on the back label of the V3500A. Look for an integer number in the range of 1 to 99,999,999.
- 2** Press **MENU** to enter menu mode and scroll using the down menu arrow until “Serial Num” menu is displayed. The number shown is the serial number of your instrument.
- 3** Retrieved from the firmware using the `SerialNumber` driver command.

Remote USB Operation

Introduction

The V3500A is USB programmable. Commands and functions accessible from the front panel are also available over USB, except the following:

- On and off
- Save state
- Recall state
- Shutdown time setting
- Backlight off time setting

The driver for the V3500A is not complicated – a few commands are necessary to initiate a connection and read and write from the instrument. Device programming is accomplished by sending and receiving strings over the USB. This programming model is very similar to GPIB programming.

Bus connections

You need to install the required drivers (See [“Driver Installation”](#) on page 27) before using the V3500A remotely. Then, connect the USB connector on the bottom side of the V3500A to the USB connector of the controller (see [“USB port”](#) on page 7).

Remote USB commands

You need to perform the following steps in order to perform remote USB commands with the V3500A.

- 1 Set the serial number in the software. The numerical serial number of the V3500A will be used as the instrument unique address for communication and can be found underneath the barcode on the back panel of the V3500A or displayed using the menu button (see [“How to navigate the menu system”](#) on page 13).
2. Initialize the V3500A.

NOTE

Refer to [“Basic V3500A commands”](#) on page 51 for more information.

Basic driver commands

In each driver command usage section, myPM is an instance of a power meter class that has been created. Refer to “[Basic V3500A commands](#)” on page 51 for language-specific sample applications.

Command Name	SerialNumber
Description	SerialNumber is a property used to control which specific V3500A instrument is accessed. SerialNumber is a 32-bit signed integer (1 to 99,999,999).
Usage	<p>C#.NET</p> <pre>int SN = 10973300; myPM.SerialNumber=SN;</pre> <p>Visual Basic.NET</p> <pre>Dim SN As Integer SN=10973300 myPM.SerialNumber=SN</pre> <p>Visual C++.NET</p> <pre>int SN=10973300; myPM->SerialNumber=SN;</pre> <p>Visual Basic 6.0</p> <pre>Dim SN As Long SN=10973300 myPM.SerialNumber=SN</pre> <p>Visual C++ 6.0</p> <pre>int SN=10973300; myPM->SerialNumber=SN;</pre>
Parameters	<p>myPM refers to the created V3500A object.</p> <p>SN is the serial number (32-bit signed integer) of the V3500A being checked.</p>

Command Name	IsDeviceAvailable()
Description	This int function checks the status of the device pointed to by SerialNumber.
Usage	<p>C#.NET</p> <pre>int SN=10973300; int MeterAvailable=myPM.IsDeviceAvailable(SN);</pre> <p>Visual Basic.NET</p> <pre>Dim SN As Integers SN=10973300 Dim MeterAvailable As Integer MeterAvailable = myPM.IsDeviceAvailable(SN)</pre> <p>Visual C++.NET</p> <pre>int SN=10973300; int MeterAvailable=myPM->IsDeviceAvailable(SN);</pre> <p>Visual Basic 6.0</p> <pre>Dim SN As Long SN=10973300 Dim MeterAvailable As Integer MeterAvailable=myPM.IsDeviceAvailable(SN)</pre> <p>Visual C++ 6.0</p> <pre>int SN = 10973300; int MeterAvailable=myPM.IsDeviceAvailable(SN);</pre>
Parameters	<p>myPM refers to the created V3500A object.</p> <p>SN is the serial number (32-bit signed integer) of the V3500A being checked.</p> <p>MeterAvailable is the integer variable created containing the device status.</p>
Return Value	<p>Returns a 32-bit integer with one of the following values:</p> <ul style="list-style-type: none">• 0: Unavailable – the device may have been opened by another program.• 1: Available.• -1: Absent—the device was not found.

Command Name	Initialize()
Description	This void function opens the link between the V3500A and the PC. The SerialNumber property must be set prior to executing.
Usage	<p>C#.NET</p> <pre>myPM.SerialNumber=10973300; myPM.Initialize();</pre> <p>Visual Basic.NET</p> <pre>myPM.SerialNumber=10973300 myPM.Initialize()</pre> <p>Visual C++.NET</p> <pre>myPM->SerialNumber=10973300; myPM->Initialize();</pre> <p>Visual Basic 6.0</p> <pre>myPM.SerialNumber=10973300 myPM.Initialize</pre> <p>Visual C++ 6.0</p> <pre>myPM.SerialNumber=10973300; myPM->Initialize();</pre>
Parameters	myPM refers to the created V3500A object.

Command Name	SendString
Description	Use this command to send and receive string messages from the V3500A – all communication with the V3500A is accomplished using this command.
Usage	<p>C#.NET</p> <pre>string Reply=myPM.SendString("*RST\n");</pre> <p>Visual Basic.NET</p> <pre>Dim Reply As String Reply=myPM.SendString("*RST" & vbLf)</pre> <p>Visual C++.NET</p> <pre>String * Reply; Reply=myPM->SendString("*RST\n");</pre> <p>Visual Basic 6.0</p> <pre>Dim Reply As String Reply = myPM.SendString("*RST" & vbCrLf)</pre> <p>Visual C++ 6.0</p> <pre>BSTR Reply; Reply=myPM->SendString("*RST\n");</pre>
Parameters	myPM refers to the created V3500A object.

Command Name	Close()
Description	This command disconnects the program connection to the V3500A. After the connection is disconnected, the V3500A is available for use with other programs.
Usage	<p>C#.NET</p> <pre>myPM.Close();</pre> <p>Visual Basic.NET</p> <pre>myPM.Close()</pre> <p>Visual C++.NET</p> <pre>myPM->Close();</pre> <p>Visual Basic 6.0</p> <pre>myPM.Close</pre> <p>Visual C++ 6.0</p> <pre>myPM->Close();</pre>
Parameters	myPM refers to the created V3500A object.

Command Name	FindUninitializedDevices()
Description	Use this command to return a string containing a listing of serial numbers of all uninitialized ^[1] V3500A (comma-delimited). If no un-initialized V3500A are present, the string is empty.
Usage	C#.NET <pre>string List; List=myPM.FindUninitializedDevices();</pre> Visual Basic.NET <pre>Dim List As String List = myPM.FindUninitializedDevices()</pre> Visual C++.NET <pre>String * List; List = myPM->FindUninitializedDevices();</pre> Visual Basic 6.0 <pre>Dim List As String List=myPM.FindUninitializedDevices()</pre> Visual C++ 6.0 <pre>BSTR List; List=myPM->FindUninitializedDevices();</pre>
Parameters	myPM refers to the created V3500A object. List is the string variable containing the returned serial number(s).

[1] The statement “uninitialized V3500A” refers to power meters which are connected to your computer, but have not had the Initialize() function called on them. Also, when Close() is called on initialized devices, they return to the uninitialized state and are visible to the FindUninitializedDevices() command.

Basic V3500A commands

Command Name	Reset
Description	This command resets the V3500A to its factory power-on state.
Syntax	*RST<LF>
Response	OK
Command Name	Triggered power read
Description	This is the basic measurement command for the V3500A.
Syntax	*TRG<LF>
Response	<Value>
Return value	Returns the present V3500A reading.
Comments	The present read cycle of the V3500A is interrupted, and a new one is started. The measurement from the new cycle is returned.
Command Name	Non-triggered power read
Description	This command returns the present reading of the V3500A.
Syntax	PWR? <LF>
Response	<Value>
Comments	This is a non-triggered measurement. If the input power has changed during the present measurement cycle, the measured power may be unpredictable.
Command Name	Zero command
Description	This command zeroes the V3500A.
Syntax	ZERO<LF>
Response	OK
Comments	This internal correction routine removes offset errors in the measurement. This is necessary to preserve accuracy when measuring low-level signals.

Command Name	Set frequency
Description	This command sets the operating frequency of the V3500A.
Syntax	FREQ<Value><LF>
Response	OK
Comments	The instrument of measurement is Megahertz (MHz).

Averaging control commands

Command Name	Set averaging factor
Description	This command sets how many averages are taken before returning a power measurement.
Syntax	SETAVG<Value><LF>
Response	OK
Comments	The valid range of <Value> is 0 through 5 (see Table 3-1).

Table 3-1 SETAVG command values

<Value>	Number of averages taken
0	1 ^[1]
1	2
2	4
3	8
4	16
5	32

[1] Equivalent to averaging disabled.

NOTE

Sending a value using this command results in taking averages of 2^x measurements (where $x = \langle \text{Value} \rangle$).

For example:

- Sending `SETAVG<1><LF>` causes the average factor to take 2^1 or 2 measurements
- Sending `SETAVG<2><LF>` causes the average factor to take 2^2 or 4 measurements
- Sending `SETAVG<3><LF>` causes the average factor to take 2^3 or 8 measurements

When $\langle \text{Value} \rangle = 0$, (sending `SETAVG 0`), the number of measurements is set to 1, and is equivalent to averaging disabled.

Command Name	Get averaging factor
Description	This command reads and returns the averaging factor, which is equal to \log_2 (number of measurements per average).
Syntax	<code>AVG?<LF></code>
Response	<code><Value></code>
Comments	A value of 0 is equivalent to having averaging turned off.

Measurement speed control commands

Command Name	Set normal speed mode
Description	This command sets the V3500A to normal speed mode.
Syntax	<code>NMODE<LF></code>
Response	OK
Comments	Normal speed mode is the default mode of operation. The V3500A accuracy specifications apply in normal mode. Measurement speed is level-dependent.

Command Name	Set high speed mode
Description	This command sets the V3500A to high speed mode.
Syntax	HSMODE<LF>
Response	OK
Comments	High speed mode turns off all internal averaging and filtering. Measurement noise is higher (especially at low signal levels), but the measurement speed is much faster.

Unit of measurement commands

Command Name	dBm mode
Description	This command sets the V3500A to dBm mode.
Syntax	UDBM<LF>
Response	OK
Comments	Send this command to express the remote and front panel measurements in dBm.

Command Name	watts mode
Description	This command sets the V3500A to watts mode.
Syntax	UMW<LF>
Response	OK
Comments	Send this command to express remote measurements in units of watts, regardless of the units displayed on the front panel. The front panel display will express measurements in units of watts, milliwatts, or microwatts, as appropriate.

Relative Offset Commands

Command Name Set relative offset

Description This command sets a relative offset value.

Syntax SETREL<Value><LF>

Command Name Check for the relative offset value

Description This command checks for and returns the set relative offset value.

Syntax RELVAL?<LF>

Command Name Turn relative offset on

Description This command sets the relative offset to ON.

Syntax RELON<LF>

Command Name Turn relative offset off

Description This command sets the relative offset to OFF.

Syntax RELOFF<LF>

Command Name Check status of the relative offset

Description This command checks the status of the relative offset. If it is ON, a "1" is returned, and if it is OFF, a "0" is returned. If it is in EDIT mode, a "2" is returned.

Syntax REL?<LF>

Miscellaneous commands

Command Name	Backlight on
Description	This command turns on the LCD display and keyboard backlight.
Syntax	BLON<LF>
Response	OK
Comments	The backlight will remain on for the length of time specified by the backlight timer. The timer is controllable from the front panel using the menu button (see “How to navigate the menu system” on page 13).

Command Name	Backlight off
Description	This command turns off the LCD display and keyboard backlight.
Syntax	BLOFF<LF>
Response	OK

Command Name	Get serial number
Description	This command returns the numeric serial number of the instrument.
Syntax	SN?<LF>
Response	<Value>

Command Name	Retrieve firmware revision
Description	This command returns the firmware revision.
Syntax	FWREV?<LF>

Examples

This section provides example programs that initialize the V3500A, make measurements, and close the V3500A. Examples are provided using the following programming language:

- [Microsoft Visual Studio.NET](#)
- [Microsoft Visual Basic 6.0](#)
- [Microsoft Visual C++ 6.0](#)

Microsoft Visual Studio.NET

The following examples are console applications. Follow the steps below to run in Microsoft Visual Studio.NET.

- 1 Create a new.NET console application project.
- 2 Delete the contents of the source file.
- 3 Copy the desired applicable example code into the source code file.
 - [“Example code using Microsoft C#.NET”](#) on page 58
 - [“Example code using Microsoft Visual Basic.NET”](#) on page 61
 - [“Example code using Microsoft Visual C++.NET”](#) on page 64
- 4 Add a reference to the DLL – refer to [“Adding a reference \(Microsoft Visual Studio.NET\)”](#) on page 39.

3 Driver Installation and Commands

Example code using Microsoft C#.NET

This sample program shows how to program the V3500A using Microsoft C#.NET 2003.

```
using System;
namespace ExampleV3500A
{
    class Class1
    {
        [STAThread]
        static void Main(string[] args)
        {
            string Reply;
            double MeasuredPower;
            // The namespace for the V3500A driver is AgilentV3500A_NS.
            // First, create the V3500A object.
            AgilentV3500A_NS.AgilentV3500A myPM =new
            AgilentV3500A_NS.AgilentV3500A();
            // Set the serial number and check that the meter is available
            int SN=10973300; // Set this to the numerical serial number of your V3500A (without
            prefix)
            int MeterAvailable=myPM.IsDeviceAvailable(SN);
            // A return value of 1 means the V3500A is available.
            // A value of -1 means it is absent, and a value of 0 means it is unavailable (for example, it
            may be in use by another program).
            if (MeterAvailable != 1)
            {
                Console.WriteLine("PowerMeter not available;
                status={0}",MeterAvailable); return;
            }
            Console.WriteLine("V3500A serial number {0} is available", SN);
            myPM.SerialNumber=SN;
```

```

// Initialize the V3500A
try
{
myPM.Initialize();
}
// If initialization fails:
catch(Exception e)
{
    Console.WriteLine("Error initializing PowerMeter: "+e.Message);
    return;
}
Console.WriteLine("V3500A initialized");
// Now we can communicate with the V3500A.
// Configure the V3500A for a measurement:
try
{
    Reply=myPM.SendString("*RST\n"); // Reset the power meter
    CheckForOK(Reply);
    Reply=myPM.SendString("FREQ1000\n"); // Set the frequency to 1000 MHz
    CheckForOK(Reply);
}
// If an error occurred:
catch(Exception e2)
{
    Console.WriteLine("Error communicating with PowerMeter:
"+e2.Message);
    return;
}
Console.WriteLine("V3500A configured");
// Take a reading:

```

3 Driver Installation and Commands

```
try
{
    Reply=myPM.SendString(" *TRG\n");
    MeasuredPower=Convert.ToDouble(Reply);
}
// If an error occurred:
catch(Exception e3)
{
    Console.WriteLine("Error reading power from the PowerMeter:
    "+e3.Message);
    return;
}
Console.WriteLine("Measured power was {0:F2} dBm",MeasuredPower);
}
static void CheckForOK(string Message)
{
    if (Message.Equals("OK"))
        return;
    else
    {
        Console.WriteLine("Expected an 'OK' from the V3500A; received:
        "+Message);
    }
}
}
```

Example code using Microsoft Visual Basic.NET

' This sample program shows how to program the Agilent V3500A PowerMeter using Microsoft Visual Basic .NET 2003

```

Module Module1
    Sub Main()
        Dim MeasuredPower As Double
        Dim Reply As String
        Dim SN As Integer
        Dim MeterAvailable As Integer

        ' The namespace for the V3500A driver is AgilentV3500_NS
        ' First, create the PowerMeter object
        Dim myPM As AgilentV3500A_NS.AgilentV3500A
        myPM = New AgilentV3500A_NS.Agilent3500A

        'Set the serial number and check that the meter is available
        SN = 10973300 'Set this to the numerical serial number of your V3500A (without prefix)
        MeterAvailable = myPM.IsDeviceAvailable(SN)
        ' A return value of 1 means the PowerMeter is available.
        ' A value of -1 means it is absent, and a value of 0 means it is unavailable (for example, it may
        be in use by another program).
        If (MeterAvailable <> 1) Then
            Dim Message As String
            Message = "PowerMeter is not available; status=" +
                MeterAvailable.ToString()
            Console.WriteLine(Message)
            Exit Sub
        End If
        Console.WriteLine("V3500A serial number {0} is available", SN)
        myPM.SerialNumber = SN
    
```

3 Driver Installation and Commands

```
' Initialize the PowerMeter
Try
    myPM.Initialize()
    ' If initialization fails:
Catch e As Exception
    Console.WriteLine("Error opening V3500A: " & e.Message)
    Exit Sub
End Try
Console.WriteLine("V3500A initialized")

' Now we can communicate with the PowerMeter.
' Configure the PowerMeter for a measurement:
Try
    Reply = myPM.SendString("*RST" & vbCrLf) 'Reset the PowerMeter
    CheckForOK(Reply)
    Reply = myPM.SendString("FREQ1000" & vbCrLf) 'Set the frequency to 1000 MHz
    CheckForOK(Reply)
    ' If an error occurred:
Catch e2 As Exception
    Console.WriteLine("Error sending to V3500A: " & e2.Message)
    Exit Sub
End Try
Console.WriteLine("V3500A configured")

' Take a reading:
Try
    Reply = myPM.SendString("*TRG" & vbCrLf) ' Trigger a power measurement
    MeasuredPower = Convert.ToDouble(Reply)
Catch e3 As Exception
    Console.WriteLine("Error reading power from V3500A: " & e3.Message)
    Exit Sub
```



```
End Try

Console.WriteLine("The measured power was " & MeasuredPower.ToString())
' Now that we're done, close the V3500A, making available for other users
myPM.Close()

End Sub

Private Sub CheckForOK(ByVal Message As String)
    If (Message.Equals("OK")) Then
        Exit Sub
    End If

    Console.WriteLine("Expected an 'OK' from the V3500A, received: " & Message)
End Sub

End Module
```

3 Driver Installation and Commands

Example code using Microsoft Visual C++.NET

// This sample program shows how to program the V3500A using Microsoft Visual C++.NET 2003

```
#include "stdafx.h"
#using <mscorlib.dll>
using namespace System;
using namespace AgilentV3500A_NS;
int _tmain()
{
    String * Reply;
    double MeasuredPower;
    void CheckForOK(String * Msg);
    // The namespace for the V3500A driver is AgilentV3500A_NS.
    // First, create the V3500A object.
    AgilentV3500A_NS::AgilentV3500A *myPM =new AgilentV3500A();
    // Set the serial number and check that the meter is available.
    int SN=10973300; // Set this to the numerical serial number of your V3500A
    (without prefix)
    int MeterAvailable=myPM->IsDeviceAvailable(SN);
    // A return value of 1 means the V3500A is available.
    // A value of -1 means it is absent, and a value of 0 means it is unavailable (for example, it may
    be in use by another program).
    if (MeterAvailable != 1)
    {
        Console::WriteLine(S"PowerMeter not available;
        status={0}", __box(MeterAvailable));
        return 0;
    }
    Console::WriteLine("V3500A serial number {0} is available", __box(SN));
    myPM->SerialNumber=SN;
    // Initialize the V3500A.
```

```

try
{
    myPM->Initialize();
}
// If initialization fails:
catch(Exception *e)
{
    Console::Write(S"Error initializing PowerMeter: ");
    Console::WriteLine(e->Message);
    return 0;
}
Console::WriteLine(S"V3500A initialized");
// Now we can communicate with the V3500A.
// Configure the V3500A for a measurement:
try
{
    Reply=myPM->SendString(" *RST\n"); // Reset the power meter
    CheckForOK(Reply);
    Reply=myPM->SendString("FREQ1000\n"); // Set the frequency to 1000 MHz
    CheckForOK(Reply);
}
// If an error occurred:
catch(Exception *e2)
{
    Console::Write(S"Error communicating with PowerMeter: ");
    Console::WriteLine(e2->Message);
    return 0;
}
Console::WriteLine(S"V3500A configured for power measurement");

```

3 Driver Installation and Commands

```
// Take a reading:
try
{
    Reply=myPM->SendString(" *TRG\n");
    MeasuredPower=Convert::ToDouble(Reply);
}
// If an error occurred:
catch(Exception *e3)
{
    Console::Write(S"Error reading power from the PowerMeter: ");
    Console::WriteLine(e3->Message);
    return 0;
}
Console::WriteLine(S"Measured power was {0:F2} dBm", __box(MeasuredPower));
return 1;
}

void CheckForOK(String * Message)
{
    if (Message->Equals("OK"))
        return;
    else
    {
        Console::Write(S"Expected an 'OK' from the V3500A; received: ");
        Console::WriteLine(Message);
    }
}
```

Microsoft Visual Basic 6.0

This example section contains a Windows Forms application. Follow the steps below to run in Microsoft Visual Basic 6.0:

- 1 Create a new Windows Forms project.
- 2 Delete the source code of the newly created Windows Forms project.
- 3 Copy the following code into the source code file.
- 4 Create three controls on the form:
 - A button named btnReadPower
 - A button named btnExit
 - A text box named txtMessages
- 5 Add a reference to the DLL – refer to [“Adding a reference \(Visual Basic 6.0\)”](#) on page 40.

Example code using Microsoft Visual Basic 6.0

This sample program shows how to program the V3500A using Microsoft Visual Basic 6.0.

```
Dim myPM As New AgilentV3500A.AgilentV3500A
Dim Message As String
Private Sub btnExit_Click()
    myPM.Close
End Sub
Private Sub btnReadPower_Click()
    Dim MeasuredPower As Double
    Dim Reply As String
    ' Now we can communicate with the V3500A.
    ' Configure the V3500A for a measurement:
    On Error GoTo Err_Failed_Setup
    Reply = myPM.SendString("*RST" & vbCrLf) ' Reset the V3500A
    CheckForOK(Reply)
```

3 Driver Installation and Commands

```
Reply = myPM.SendString("FREQ1000" & vbCrLf) ' Set the frequency to 1000 MHz
CheckForOK(Reply)
Message = Message & "V3500A configured." & vbCrLf
txtMessages.Text = Message
"Take a reading:
On Error GoTo Err_Failed_Read
Reply = myPM.SendString("*TRG" & vbCrLf)
Message = Message & "Measured power: " & Reply & " dBm." & vbCrLf
txtMessages.Text = Message
Exit Sub
Err_Failed_Setup:
Message = Message & "Error configuring V3500A for measurement: " &
Err.Description & vbCrLf
txtMessages.Text = Message
Exit Sub
Err_Failed_Read:
Message = Message & "Error reading power from V3500A: " & Err.Description &
vbCrLf
txtMessages.Text = Message
Exit Sub
Err_Failed_Send:
MsgBox("Error during send " & Err.Description)
End Sub
Private Sub CheckForOK(ByVal Msg As String)
Dim StringCompare As Integer
StringComp = StrComp(Msg, "OK")
If (StringCompare = 0) Then
Exit Sub
Else
```

```

    Message = Message & "Expected an 'OK' from the V3500A; received: " & Msg &
vbCrLf

    txtMessages.Text = Message

End If

End Sub

Private Sub Form_Load()

    Dim SN As Long

    Dim MeterAvailable As Integer

    Message = ""

    ' Attempt to register the V3500A DLL
    On Error GoTo Err_DLL_Not_Registered

    Message = Message & "Successfully created V3500A object." & vbCrLf
    txtMessages.Text = Message

    ' Set the serial number and check that the meter is available

    SN = 10973300 ' Set this to the numerical serial number of your V3500A (without prefix)

    MeterAvailable = myPM.IsDeviceAvailable(SN)

    ' A return value of 1 means the V3500A is available.

    ' A value of -1 means it is absent, and a value of 0 means it is unavailable (for example, it may be
in use by another program).

    If (MeterAvailable <> 1) Then

        Message = Message & "PowerMeter is not available; status=" & MeterAvailable &
vbCrLf

        txtMessages.Text = Message

        Exit Sub

    End If

    Message = Message & "V3500A serial number " & SN & " is available." & vbCrLf
    txtMessages.Text = Message

    myPM.SerialNumber = SN

    ' Initialize the V3500A

    On Error GoTo Err_Failed_Initialize

```

3 Driver Installation and Commands

```
myPm.Initialize  
Message = Message & "V3500A successfully initialized." & vbCrLf  
txtMessages.Text = Message  
Exit Sub
```

Err_DLL_Not_Registered:

```
' Check to see if error 429 occurs  
If Err.Number = 429 Then  
    Message = Message & "Failed To Register V3500A DLL" & vbCrLf  
Else  
    Message = Message & "Error creating V3500A object: " & Err.Description &  
vbCrLf  
End If  
txtMessages.Text = Message  
Exit Sub
```

Err_Failed_Initialize:

```
Message = Message & "Error initializing V3500A: " & Err.Description & vbCrLf  
txtMessages.Text = Message  
Exit Sub
```

End Sub

Microsoft Visual C++ 6.0

This example is a console application. Follow the steps below to run in Visual C++ 6.0:

- 1 Create a new Win32 Console Application.
- 2 Delete the source code of the newly created console application project.
- 3 Copy the following code into the source code file.

NOTE

Although Visual C++ 6.0 does not need any special steps to reference the DLL, make sure the code refers to the correct installation directory — refer to [“Adding a reference \(Microsoft Visual C++ 6.0\)”](#) on page 41. In the sample code below, the specific program statement regarding the driver file installation is in bold-face type style.

Example code using Microsoft Visual C++ 6.0

This sample program shows how to program the V3500A using Microsoft Visual C++ 6.0.

```
#include "stdafx.h"
#include <atlbase.h>
#include <atlconv.h>
#include <iostream.h>
#include <windows.h>
#include <stdio.h>

#pragma warning (disable: 4278)
#import "C:\Program Files\Agilent\Agilent V3500A Driver AgilentV3500A.tlb" \
no_namespace named_guids
void dump_com_error(_com_error &e);
void CheckForOK(BSTR Message);
```

3 Driver Installation and Commands

```
int main(int argc, char* argv[])
{
    PMInterface *myPM = NULL;
    BSTR Reply=NULL;
    int MeterAvailable=0;
    int SN;
    USES_CONVERSION; // Enables use of ATL string conversion macros
    CoInitialize(NULL); // Initializes the COM library on the current thread
    // Create an instance of the V3500A driver:
    HRESULT hr = CoCreateInstance(CLSID_AgilentV3500A,NULL, CLSCTX_INPROC_SERVER,
    IID_PMInterface, reinterpret_cast<void*>(&myPM));
    if (FAILED(hr))
    {
        printf("Couldn't create an instance of the V3500A driver!... 0x%x\n", hr);
        return 0;
    }

    // Set the serial number and check that the meter is available
    SN=10973300; // Set this to the numerical serial number of your V3500A (without prefix)
    try
    {
        MeterAvailable=myPM->IsDeviceAvailable(SN);
    }
    catch (_com_error& e)
    {
        cout << "COM error on IsDeviceAvailable"<<endl;
        dump_com_error(e);
        return 0;
    }
}
```

```

// A return value of 1 from IsDeviceAvailable() means the V3500A is available.
// A value of -1 means it is absent, and a value of 0 means it is unavailable (for example, it may be
in use by another program).
if (MeterAvailable != 1)
{
    cout << "V3500A PowerMeter is not available; status= "<<MeterAvailable<<endl;
    return 0;
}
cout<<"V3500A serial number "<< SN << " is available"<<endl;
myPM->SerialNumber=SN;

// Initialize the V3500A
try
{
myPM->Initialize();
}
// This catches errors with COM:
catch (_com_error& e)
{
    cout << "COM error initializing V3500A:"<<endl;
    dump_com_error(e);
}
// This catches all other errors.
catch (...)
{
    cout << "Error initializing" << endl;
    return 0;
}

```

3 Driver Installation and Commands

```
cout << "V3500A initialized" << endl;
// Setup the V3500A for a measurement:
try
{
    Reply=myPM->SendString("*RST\n"); // Reset the V3500A
    CheckForOK(Reply);
    Reply=myPM->SendString("FREQ1000\n"); // Set the frequency to 1000 MHz
    CheckForOK(Reply);
}
// This catches errors with COM:
catch (_com_error& e)
{
    cout << "COM error while programming V3500A:"<<endl;
    dump_com_error(e);
}
// This catches all other errors.
catch (...)
{
    cout << "Error programming V3500A" << endl;
}
cout << "V3500A configured for power measurement" << endl;

// Take a reading:
try
{
    Reply=myPM->SendString("*TRG\n");
    cout << "Measured power: " << W2A(Reply) << endl;
}
catch (_com_error& e)
```

```

{
    cout << "COM error while making a power measurement with V3500A"<<endl;
    dump_com_error(e);
}
catch (...)
{
    cout << "Error reading power from V3500A" << endl;
}
myPM->Release();
myPM=NULL;
CoUninitialize();
return 1;
}

void dump_com_error(_com_error &e)
{
    _tprintf(_T("COM Error Information:\n"));
    _tprintf(_T("Code = %08lx\n"), e.Error());
    _tprintf(_T("Code meaning = %s\n"), e.ErrorMessage());
    _bstr_t bstrSource(e.Source());
    _bstr_t bstrDescription(e.Description());
    _tprintf(_T("Source = %s\n"), (LPCTSTR) bstrSource);
    _tprintf(_T("Description = %s\n"), (LPCTSTR) bstrDescription);
}

void CheckForOK(BSTR Message)
{
    USES_CONVERSION; // Enables use of ATL string conversion macros
    char ExpectedReturn[]="OK";
    char *ActualReturn=W2A(Message);

```

3 Driver Installation and Commands

```
int Result=strcmp(ActualReturn,ExpectedReturn);  
if (Result)  
{  
cout << "Expected an 'OK' from the V3500A, received " << W2A(Message) << endl;  
}  
}
```



4 RF Measurement Basics

Power Definition	78
Units of Measurement	80
Watts	80
Decibels	80
RF power measurement	81
Low frequency method	81
High frequency method	81
Power of various types of signals	83
Continuous-wave signals	83
Modulated signals	83
Pulse-modulated signals	84
Measurement accuracy	85

This chapter describes the RF measurement basics of the V3500A Handheld RF Power Meter.



Power Definition

In electrical circuits, power delivered to an electrical load can be defined as:

$$P = \frac{V^2}{R}$$

where

P is the delivered power.

V is the voltage applied to the load.

R is the resistance of the load.

When the power is in the form of an AC waveform, a more complex definition is needed. The cyclic power from the AC waveform varies with time. Although the power of an AC waveform delivered at a specific time can still be defined using the above formula, this does not adequately describe the AC waveform power delivered to a load. Power of an AC waveform delivered to an electrical load is equal to the mean power delivered over the course of one cycle of the sinusoidal waveform defined by:

$$P = \int_0^T (V_{peak} \cos((2\pi t)/T))^2 / R dt$$

where

T is the period of the AC waveform.

Evaluating the integral, we can reduce this expression to:

$$P = \frac{V_0^2}{R}$$

where

V_0 is known as the root mean square (RMS) voltage of the sinusoid.

$$V_0 = \frac{V_{peak}}{\sqrt{2}}$$

Units of Measurement

RF power measurements can be expressed in either Watts or dBm. The V3500A can display results in either Watts or dBm.

Watts

Watts are the standard SI unit for power measurements. In electrical terms, one volt applied across a one-ohm resistor dissipates one watt of power.

Decibels

Decibels (abbreviated dB), are a logarithmic scale used to express power. Decibels are inherently a ratio measurement providing the relative magnitude of two different numbers.

For power measurements, the difference between two signals in decibels is:

$$10 \times \log_{10} \left(\frac{P_1}{P_0} \right)$$

where

P_1 and P_0 are the two power levels to be compared.

Absolute measurement can be made on the decibel scale by using a standard power level in place of P_0 . If P_0 is defined to be 1 milliwatt, the resulting units are called “dBm.” Power expressed in dBm is calculated with the formula:

$$P_{dBm} = 10 \times \log_{10} \left(\frac{P_1}{1mW} \right)$$

RF power measurement

Low frequency method

At low frequencies, power delivered from an AC source to a load can be measured with an AC voltmeter connected across the load terminals (see [Figure 4-1](#)). The voltmeter provides a high enough input resistance that at low frequencies, the effective value of load resistance is not changed.

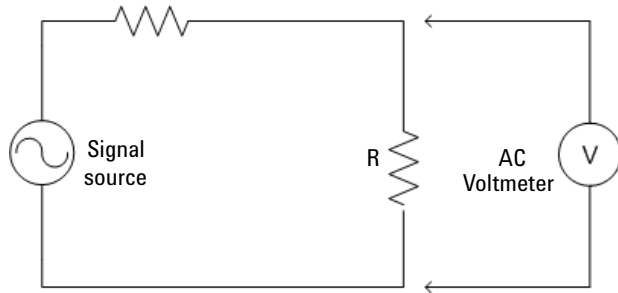


Figure 4-1 Low frequency power measurement

High frequency method

At high frequencies, the low frequency measurement technique produces inaccurate readings. To produce reliable results, a different method is required.

Inaccurate readings could be caused by parasitic capacitance in low frequency method. Parasitic capacitance causes the impedance of the shunt voltmeter to decrease, thereby behaving unpredictably with frequency.

The high frequency method replaces the AC Voltmeter (as described in the [Low frequency method](#)) with an RF power meter (the RF power meter has an internal, known load

resistance). This effectively replaces the circuit's load resistor (\mathbf{R}) with the characteristic impedance (\mathbf{Z}_0) built-in to the RF power meter (see Figure 4-2).

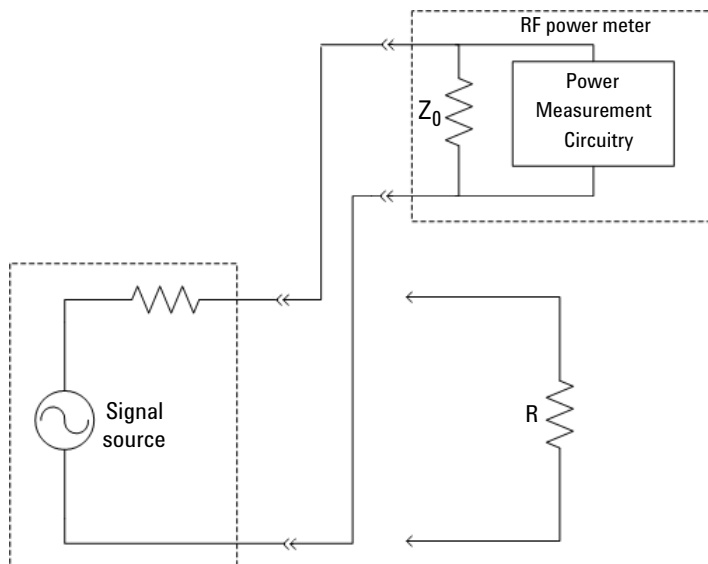


Figure 4-2 High frequency power measurement

RF circuits and systems are usually designed to work with a standard impedance value called the characteristic impedance (refer to \mathbf{Z}_0 in Figure 4-2). Typical signal sources are designed to work with a load of the same impedance, \mathbf{Z}_0 . Generally, the \mathbf{Z}_0 value for RF circuits is $50\ \Omega$ or $75\ \Omega$, with $50\ \Omega$ being the most common. The internal load resistance of the power meter is designed to equal \mathbf{Z}_0 .

Power of various types of signals

Continuous-wave signals

Continuous-wave (CW) signals are the simplest form of RF signal. CW signals consist of a constant sine wave. Power measurements on this type of wave result in a single numerical value.

Modulated signals

Modulated signals are sinusoids whose amplitude, phase, or frequency change with respect to time. Changes in either the phase or frequency do not change the power of the signal, but changes in amplitude causes change in the power level.

Two approaches can be taken to characterizing the power of modulated signals:

- Peak power meter

A peak power meter measures the power of the signal very rapidly (faster than the rate at which the modulation changes). The results can then be displayed in a graph of power versus time similar to an oscilloscope display. This approach has the advantage of displaying a great deal of information. One disadvantage is that the results can be difficult to interpret – especially for the complex modulation schemes in use today.

- Average power meter (the V3500A takes this approach)

An averaging power meter measures the power versus time of the signal, but then averages the result – condensing the measurement to a single number. The V3500A is an averaging power meter. In effect, the power meter performs the following calculation:

$$P_{avg} = \frac{1}{T} \int_0^T P(t) dt$$

where

$P(t)$ is the power of the modulated signal as a function of time.

In cases where the modulation format is known, the peak instantaneous power can be calculated from the average power.

Pulse-modulated signals

As an example, consider the pulse-modulated signal shown in Figure 4-3.

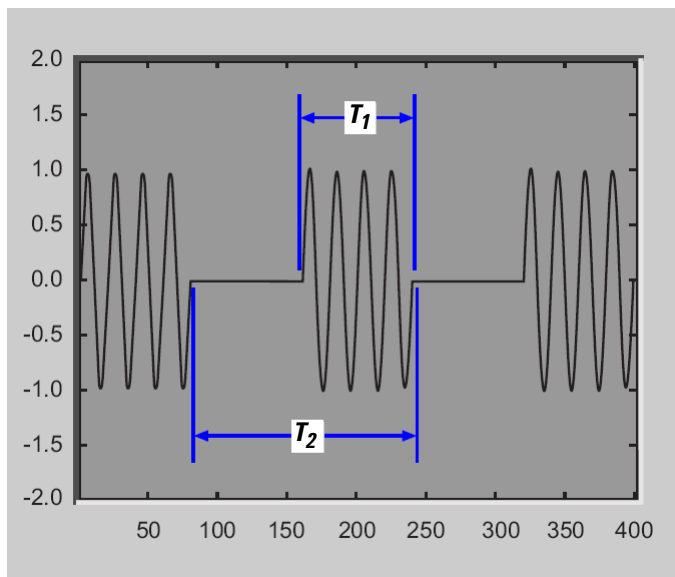


Figure 4-3 Example of pulse-modulated signals

T_1 is the pulse width of the signal – the time duration of the pulsed signal on state.

T_2 is the period of the waveform – how often the pulses occur.

Since the power is constant over the interval T_1 , and since the power is zero over the remainder of the interval T_2 , the average and peak power of pulse modulated signals are related by the equation:

$$P_{peak} = \frac{T_2}{T_1} P_{avg}$$

where

T_1 is the pulse width of the signal.

T_2 is the period of the waveform

In decibels, this would be expressed as:

$$P_{peak, dB} = 10 \times \log_{10}(T_2/T_1) + P_{avg, dB}$$

Measurement accuracy

Mismatch error

Mismatch error is one of the primary factors affecting power measurement accuracy. The goal is to measure the power that a source will deliver into a load of impedance Z_0 . The power meter is designed to have an impedance as close as possible to Z_0 . Since its impedance is not exactly Z_0 , the power delivered to the meter is not exactly equal to the power delivered to a perfect load.

Deriving the equations to calculate the mismatch error is beyond the scope of this document, but the results can be easily understood.

Consider the setup in [Figure 4-4](#). A source of output impedance Z_g is connected to a load of impedance Z_l .

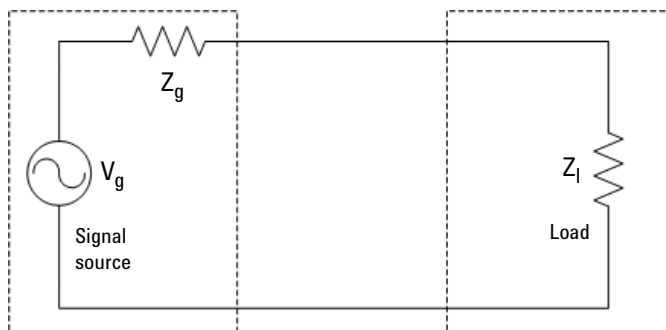


Figure 4-4 Mismatch in power measurements

The reflection coefficient of a device (Γ_g) is a measure of its impedance relative to Z_0 (Z_0 is the characteristic impedance of the system).

The reflection coefficient of the source (Γ_g) is defined as:

$$\Gamma_g = \frac{Z_g - Z_0}{Z_g + Z_0}$$

Similarly, the reflection coefficient (Γ_l) of the load is defined as:

$$\Gamma_l = \frac{Z_l - Z_0}{Z_l + Z_0}$$

If the source or load impedance is exactly equal to Z_0 , the corresponding reflection coefficient is zero. For simplicity, let's assume V_g is defined as:

$$V_g = \frac{Z_g + Z_0}{Z_0} \sqrt{Z_0}$$

With V_g defined as in the above equation – the source will deliver one watt to a load of impedance Z_0 . The power delivered to the actual load is then defined by:

$$P_{load} = \frac{1 - |\Gamma_l|^2}{|1 - \Gamma_g \Gamma_l|^2}$$

Into a perfect load of impedance Z_0 , the power delivered to the load is:

$$P_{load, Z_0} = 1$$

The mismatch error in the power measurement, then, is the ratio between P_{load, Z_0} and the power delivered to the actual load presented by the power meter is defined by:

$$\frac{P_{load, meter}}{P_{load, Z_0}} = \frac{1 - |\Gamma_{meter}|^2}{|1 - \Gamma_g \Gamma_{meter}|^2}$$

If the magnitude and phase of the source and load reflection coefficient are known, this mismatch error can be calculated and compensated for – completely eliminating mismatch uncertainty and an error term.

Alternatively, if just the magnitude of the power meter reflection coefficient is known, we can then exactly calculate the term in the numerator of the previous equation and remove its effect on measurement uncertainty. In that case, the equation becomes:

$$P_{load, Z_0} = |1 - \Gamma_g \Gamma_{meter}|^2 \times \frac{P_{load, meter}}{1 - |\Gamma_{meter}|^2}$$

The error term $|1 - \Gamma_g \Gamma_{meter}|^2$ depends on both the magnitude and phase of the source and load reflection coefficients. Frequently, the magnitude of the reflection coefficient is known or specified, but the phase is unknown. The error term will reach its maximum value when both reflection coefficients are real and 180° out of phase. This maximum error ratio is described by the equation:

$$MaximumErrorRatio = (1 + |\Gamma_g| |\Gamma_{meter}|)^2$$

The error term will reach its minimum when both reflection coefficients are real and in-phase. This minimum error ratio is described by the equation:

$$MinimumErrorRatio = (1 - |\Gamma_g| |\Gamma_{meter}|)^2$$

With this information – and knowing or estimating the reflection coefficient of the device under test – estimation of the mismatch measurement uncertainty is possible.



5 Characteristics and Specifications

Product Characteristics 90

Product Specifications 92

This chapter describes the instrument characteristics and specifications of the V3500A Handheld RF Power Meter.



Product Characteristics

POWER

Equipped with auto-shutoff

- Two 1.5 V alkaline AA batteries (Typical battery life: 17.5 hours^[1] with low battery indicator)
- USB interface cable (Standard-A to Type-B)^[2]
- Optional external DC power supply^[3] (V3500A-PWR)

DISPLAY

- 4-digits with backlight and auto-shutoff feature
- Hold feature — most recent reading is shown on the display and is no longer updated

CONNECTOR

- USB 2.0 interface with a mini-B USB connector^[4]
- Type-N male RF connector (50 Ω characteristic impedance)

OPERATING ENVIRONMENT

- 0 °C to 50 °C
- 80% RH for temperature up to 35 °C, non-condensing
- Altitude up to 2000 meters

STORAGE COMPLIANCE

- -10 °C to 70 °C
- Non-operating maximum humidity: 90% at 65 °C, non-condensing

EMC COMPLIANCE

Certified with

- IEC 61326-2-1:2005/ EN 61326-2-1:2006
- Canada: ICES-001:2004
- Australia/New Zealand: AS/NZS CISPR11: 2004

POLLUTION DEGREE

Pollution Degree 2

DIMENSIONS (W × H × D)

- 79 mm × 134 mm × 49 mm (without N-connector)

WEIGHT

- 0.5 kg

WARRANTY

- 3 years for the V3500A Handheld RF Power Meter
- 3 months for the standard shipped and optional accessories

CALIBRATION CYCLE

Recommended 1 year

- [1] Typical battery life was measured in default conditions at 500 MHz with backlight off and without USB communications. With backlight on, the typical battery life is 2.5 hours.
- [2] With the USB cable connected to provide power and the optional external power disconnected, the external power supply (V3500A-PWR) will be powered from the USB cable — regardless of whether batteries are present.
- [3] If the V3500A-PWR power supply is connected, it will be powered by the external supply — regardless of whether the USB power or batteries are present.
- [4] The interface is USB 2.0 compatible with an interface speed of 12 Mbps.

Product Specifications

The following specifications are based on performance at a temperature of $23\text{ }^{\circ}\text{C} \pm 5\text{ }^{\circ}\text{C}$ unless stated otherwise.

Category	Specifications	
Frequency range	10 MHz to 6 GHz	
Power range	-60 dBm to +20 dBm	
Maximum power	+23 dBm, 5 VDC	
Power accuracy	At $23\text{ }^{\circ}\text{C} \pm 5\text{ }^{\circ}\text{C}$ ^[1]	At $0\text{ }^{\circ}\text{C} - 50\text{ }^{\circ}\text{C}$
Frequency range	+20 dBm to +6 dBm	+20 dBm to +6 dBm
10 MHz to 3.75 GHz	$\pm 0.23\text{ dB}$	$\pm 0.33\text{ dB}$
3.75 GHz to 6 GHz	$\pm 0.20\text{ dB}$	$\pm 0.44\text{ dB}$
Frequency range	+6 dBm to -9 dBm	+6 dBm to -9 dBm
10 MHz to 3.75 GHz	$\pm 0.26\text{ dB}$	$\pm 0.33\text{ dB}$
3.75 GHz to 6 GHz	$\pm 0.40\text{ dB}$	$\pm 0.55\text{ dB}$
Frequency range	-9 dBm to -29 dBm	-10 dBm to -29 dBm
10 MHz to 3.75 GHz	$\pm 0.18\text{ dB}$	$\pm 0.29\text{ dB}$
3.75 GHz to 6 GHz	$\pm 0.19\text{ dB}$	$\pm 0.34\text{ dB}$
Frequency range	-29 dBm to -39 dBm	-30 dBm to -40 dBm
10 MHz to 3.75 GHz	$\pm 0.22\text{ dB}$	$\pm 0.32\text{ dB}$
3.75 GHz to 6 GHz	$\pm 0.25\text{ dB}$	$\pm 0.44\text{ dB}$
Frequency range	-39 dBm to -50 dBm	-39 dBm to -50 dBm
10 MHz to 3.75 GHz	$\pm 0.36\text{ dB}$	$\pm 0.48\text{ dB}$
3.75 GHz to 6 GHz	$\pm 0.39\text{ dB}$	$\pm 0.65\text{ dB}$
Frequency range	-50 dBm to -55 dBm	-50 dBm to -55 dBm
10 MHz to 3.75 GHz	$\pm 1.37\text{ dB}$	$\pm 1.47\text{ dB}$
3.75 GHz to 6 GHz	$\pm 1.81\text{ dB}$	$\pm 1.97\text{ dB}$

Category	Specifications
Linearity	At 23 °C ±5 °C At 0 °C – 50 °C
–40 dBm to +6 dBm	±0.1 dB ±0.2 dB
–50 dBm to –40 dBm	±0.4 dB ±0.5 dB
–50 dBm to –55 dBm	±1.0 dB ±1.1 dB
Noise floor	At 0 °C – 50 °C –61 dBm
Speed	<ul style="list-style-type: none"> • Normal <ul style="list-style-type: none"> ~2 readings per second (> –30 dBm approximately) ~1 readings per second (≤ –30 dBm approximately) • High-speed <ul style="list-style-type: none"> ~23 readings per second (> –30 dBm approximately) ~10 readings per second (≤ –30 dBm approximately)

[1] Customer spec after warm up time of 30 minutes

$$X = (x,f) + K(= 2) \cdot \delta(x,f) + \Delta_E(x,f[18^\circ - 28^\circ C]) + \mu$$

where

X is mean of the data taken in the frequency range stated (x,f) .

δ is standard deviation of the data taken in the frequency range stated (x,f) .

x is measured value at test frequencies.

f is frequency range over which data was taken for specification.

μ is measurement uncertainty.

Δ_E is change associated temperature variation.

18 – 28 °C is the statistics generated separately at these temperatures and larger statistical value used in setting spec.

SWR

The SWR performance graph is shown in Figure 5-1.

Table 5-1 SWR performance for different frequency band

Frequency band	SWR (0 °C – 50 °C)
10 MHz to 3.75 GHz	1.13
3.75 GHz to 6 GHz	1.22

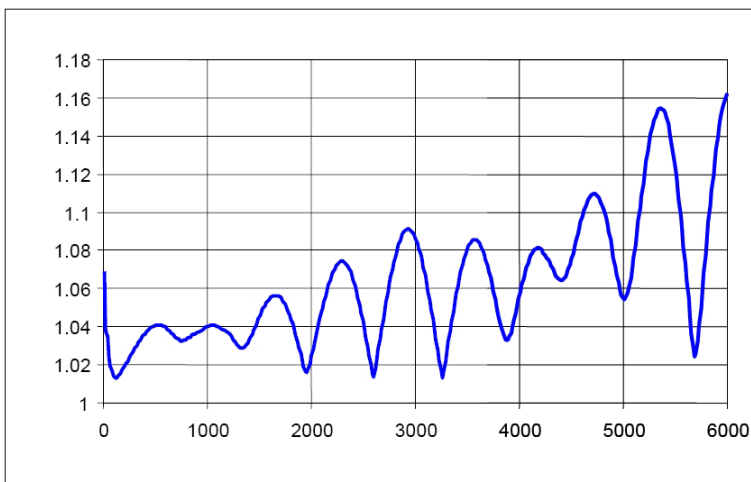


Figure 5-1 Typical SWR performance

Index

A

average
 power meter, 83
 RF power, 3
 averaging, 14

B

backlight, 12, 14, 22
 basic, 45, 51
 battery, 90
 bus connections, 43

C

commands
 averaging control, 52
 basic driver, 45
 basic V3500A, 51
 measurement speed control, 53
 miscellaneous, 56
 remote USB, 44
 unit of measurement, 54
 connectivity, 5
 connector
 external power, 8
 RF, 5
 Type-N, 5

D

dBm, 21
 decibels, 80
 dimensions, 10

E

error ratio
 maximum, 88
 minimum, 88
 examples, 15, 55

F

features, 3
 frequency
 range, 92

H

high frequency method, 81
 high-speed, 93
 mode, 19

I

inspection, 3
 instrument state
 recalling, 20
 saving, 20

K

keypad, 11

L

low frequency method, 81

M

measurement, 80
 accuracy, 85
 speed, 19, 53
 unit, 14

menu map, 13
 mismatch error, 85

O

offset, 11, 23
 operation
 front panel, 17

P

power
 connector, 8
 definition, 78
 limitations, 6
 measurement, 81
 supply, 8
 pulse, 84
 purchase items
 optional, 4
 standard, 3

R

relative, 23, 80, 86
 requirements, 26
 RF
 connector, 5
 measurement basics, 77
 power measurement, 81

S

safety, III, IV

Index

setting, 16

 backlight auto-shutoff interval, 22

 input frequency, 18

 instrument, 5

 measurement speed, 19

 units, 21

signals, 83

specifications, 92

SWR, 94

U

units, 14, 21

USB, 7, 27, 33, 43, 44, 90

W

watts, 21, 80

Z

zeroing, 11, 18

www.agilent.com

Contact us

To obtain service, warranty, or technical assistance, contact us at the following phone or fax numbers:

United States:

(tel) 800 829 4444 (fax) 800 829 4433

Canada:

(tel) 877 894 4414 (fax) 800 746 4866

China:

(tel) 800 810 0189 (fax) 800 820 2816

Europe:

(tel) 31 20 547 2111

Japan:

(tel) (81) 426 56 7832 (fax) (81) 426 56 7840

Korea:

(tel) (080) 769 0800 (fax) (080) 769 0900

Latin America:

(tel) (305) 269 7500

Taiwan:

(tel) 0800 047 866 (fax) 0800 286 331

Other Asia Pacific Countries:

(tel) (65) 6375 8100 (fax) (65) 6755 0042

Or visit Agilent World Wide Web at:

www.agilent.com/find/assist

Product specifications and descriptions in this document are subject to change without notice. Always refer to Agilent Web site for the latest revision.

© Agilent Technologies, Inc., 2010–2013

Fifth Edition, April 5, 2013
V3500-90001



Agilent Technologies