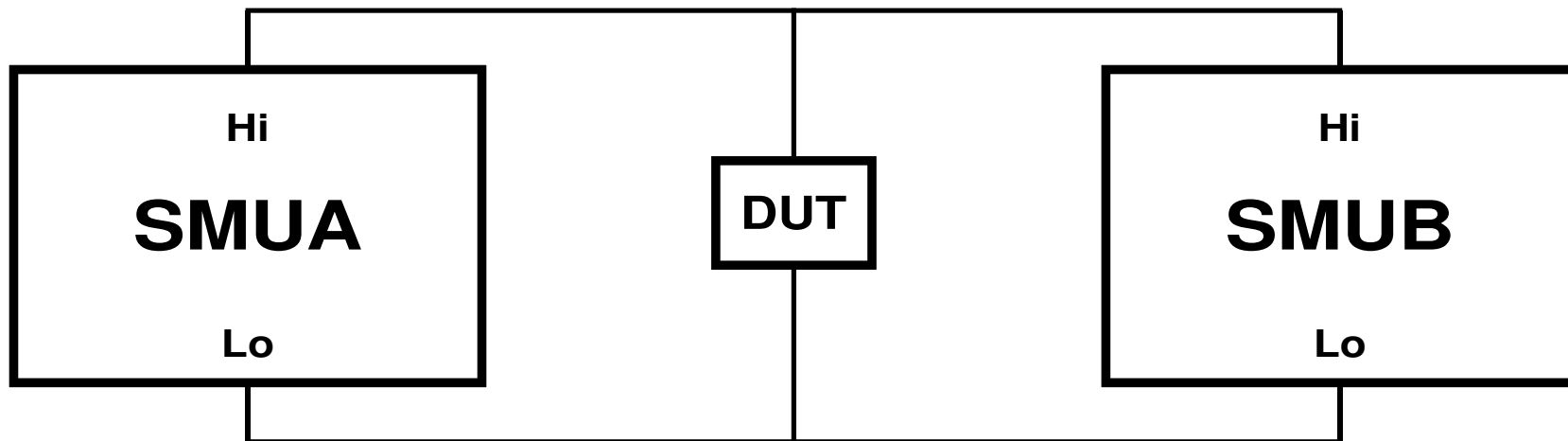


Keithley 2602 Example Program: High Current from Parallel SMU's

This example program demonstrates doubling the current output of the Model 2602 using both SMU channels wired in parallel and configured as current sources.



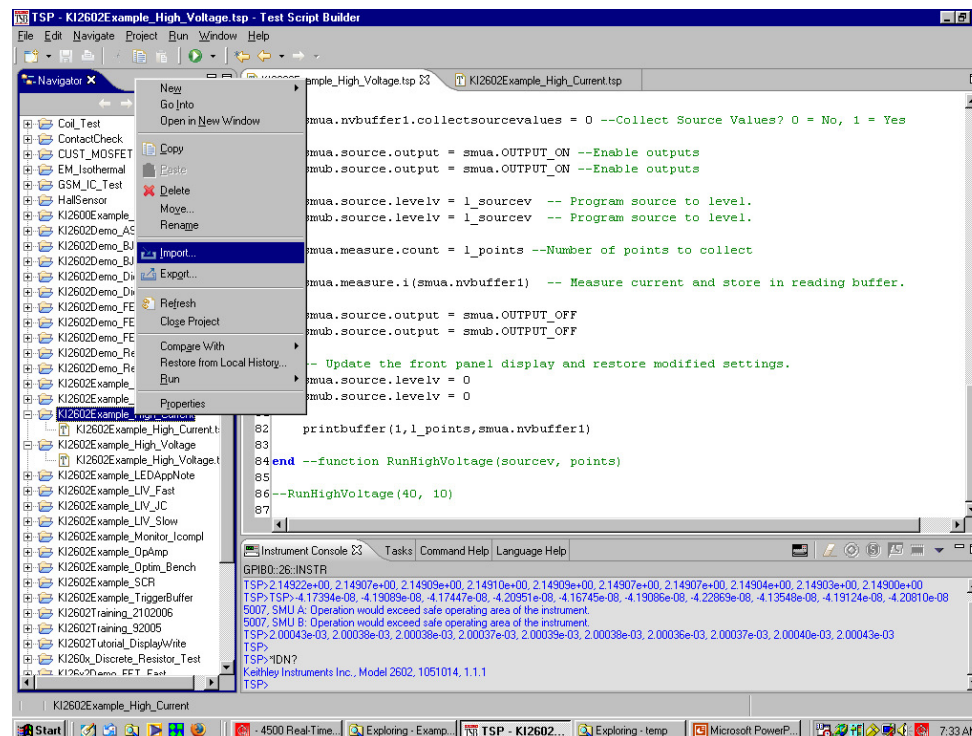
Test Schematic

**KEITHLEY**

A GREATER MEASURE OF CONFIDENCE

Installation

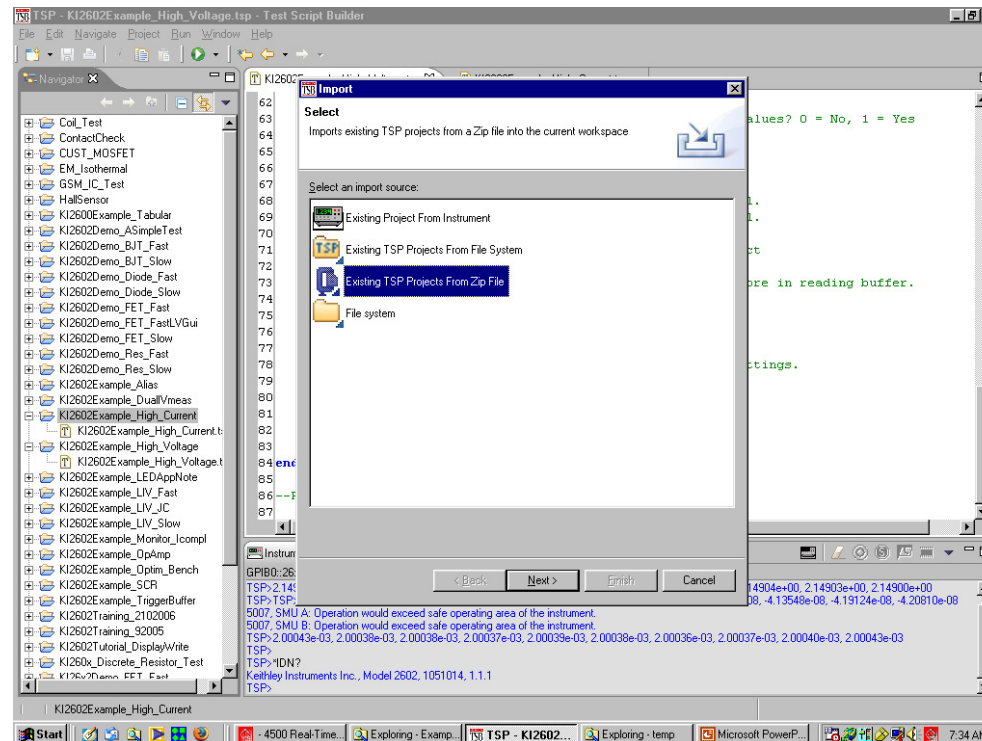
- Import and unzip file to Navigator Window



KEITHLEY

Installation

- Import from Zip

**KEITHLEY**

Connect and Run

- Connect to instrument
- Select project
- Right Click “Run as TSP” in active Window
- Send `RunHighCurrent (sourceI, points)`
- Each 2602 will deliver the programmed sourceI value. Setting this to 1A will deliver 2A at the DUT.
- For example, sending `RunHighCurrent (1, 2)` will source 2A to the DUT and collect 2 readings.



Test Considerations

- Compliance for Both SMU's should be set to the maximum value. If either SMU reaches a compliance state, damage to the instrument and DUT may result.
- **WARNING:** This configuration can deliver harmful signal levels. Please take precautions to avoid exposure to hazardous currents/voltages.

