

# Align All LCD, CRT, DLP and Plasma Video Displays to Match Industry Specifications and to Deliver Peak Performance with the CP5000 All-Display ColorPro Color Analysis System



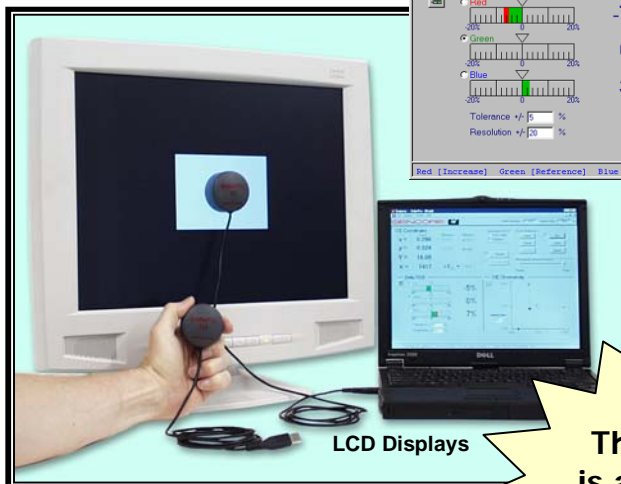
Plasma Displays



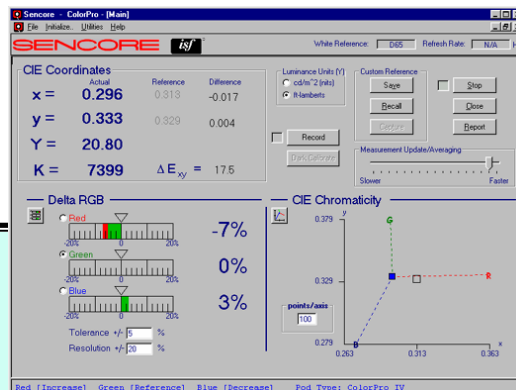
CRT Displays



DLP Displays



LCD Displays



The CP5000 is available in USB or Serial Version.

## The CP5000 Color Analysis System Features:

- Align color tracking on any video display to give you the confidence that the display is aligned to perform its best and to industry specifications.
- Continuously updated readings let you calibrate video displays with flexibility not found with the 'single-shot' reading capabilities of a spectroradiometer.
- The easy-to-use graphical interface greatly decreases calibration time with easy to follow measurement screens. The CIE and RGB screens make calibration simple by illustrating exactly which colors need adjusting.
- Portable operation makes it easy to align displays wherever displays are found.
- The measurement specifications are similar to those found on lab-grade instruments and are NIST traceable. Patented light-pipe system provides a narrow light acceptance angle for accurate measurement of LCD displays.
- Custom software lets you store calibration information and print it out in an easy to interpret report.
- Optional software DLL package lets you integrate the CP5000 All-Display ColorPro into your specific color analyzer application.
- Attractive, durable carrying case protects your CP5000 between calibration jobs.
- Available in either USB or standard serial version.

**Call Today! 1-800-736-2673 or 1-605-339-0100**

# CP5000 'ColorPro' Specifications

## General

Measurements: xyY, Luminance (Foot Lamberts or cd/m<sup>2</sup>), ΔRGB, Color Temperature, ΔE<sub>xy</sub>

Measurement Update Rate/Averaging: Adjustable

White References: D65, D50, E, D55, D75, C, 3000K to 12000K in 500 K steps, Custom, Custom Capture. An unlimited number of custom references can be stored to disk.

Host System: Pentium-class PC running Windows 95 or higher.

Operating Temperature: 10 to 25°C

Operating Relative Humidity: 10 — 80% (non-condensing)

Operating Altitude: Sea level to 10,000 ft

Accuracy Specifications: @ 20°C, D65, relative to NIST certified reference

## ColorPro III

Accuracy: xy: ± 0.002  
Y: ± 4%  
(@ 65 cd/m<sup>2</sup> minimum)

Repeatability: xy: ± 0.002  
Y: ± 1%  
(same-sensor/no-dismount)

Luminance Range: 0.05 — 800 cd/m<sup>2</sup>

## ColorPro IV

Accuracy: xy: ± 0.004  
Y: ± 4%  
(@ 65 cd/m<sup>2</sup> minimum)

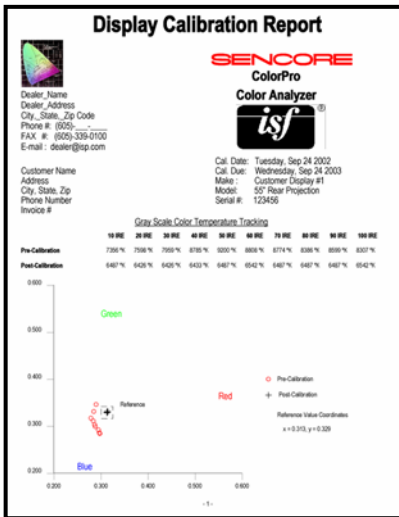
Repeatability: xy: ± 0.002  
Y: ± 1%  
(same-sensor/no-dismount)

Luminance Range: 3 — 350 cd/m<sup>2</sup>

Sensor Field of View: 10°

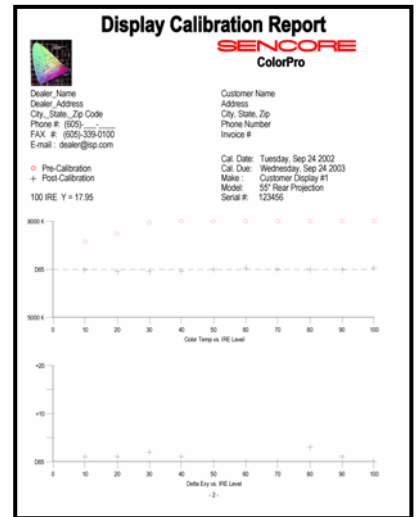
## Display Calibration Report:

The CP5000 ColorPro All-Display Color Analyzer creates a report printout of the pre-and post-calibration xy and color temperature readings. Your company information logo can be inserted in the printout. The report documents the display performance and provides a record for calibration.



**The CP5000 Aligns An Array Of Displays and Display Types:**

- LCD
- Plasma
- CRT
- DLP
- And more
- Front Projectors
- Rear Projectors
- Direct View



## CP5000 ColorPro Supplied Accessories:



**Color Pod Holder**  
Holds the Color Analyzer in position for adjusting front and rear projection systems.



**Extension Cable**  
Use with the Color Analyzer when calibrating front projection systems.



**Carrying Case**  
Protective carrying case for safe transporting of the Color Analyzer.

**Call Today! 1-800-736-2673 or 1-605-339-0100**

3200 Sencore Drive  
Fax: 605-339-0317  
Form7316B

Sioux Falls, SD 57107  
www.sencore.com

