

STRAINBLOG

THE ESSENTIAL BLOG FOR ENGINEERS

2016

JANUARY

	Su	Mo	Tu	We	Th	Fr	Sa
						1	2
1	3	4	5	6	7	8	9
2	10	11	12	13	14	15	16
3	17	18	19	20	21	22	23
4	24	25	26	27	28	29	30
5	31						

FEBRUARY

	Su	Mo	Tu	We	Th	Fr	Sa
							5
6	7	8	9	10	11	12	13
7	14	15	16	17	18	19	20
8	21	22	23	24	25	26	27
9	28	29					

MARCH

	Su	Mo	Tu	We	Th	Fr	Sa
						1	2
3	4	5	6	7	8	9	10
11	12	13	14	15	16	17	18
19	20	21	22	23	24	25	26
27	28	29	30	31			

APRIL

	Su	Mo	Tu	We	Th	Fr	Sa
						1	2
3	4	5	6	7	8	9	
10	11	12	13	14	15	16	
17	18	19	20	21	22	23	
24	25	26	27	28	29	30	

MAY

	Su	Mo	Tu	We	Th	Fr	Sa
	1	2	3	4	5	6	7
8	9	10	11	12	13	14	
15	16	17	18	19	20	21	
22	23	24	25	26	27	28	
29	30	31					

JUNE

	Su	Mo	Tu	We	Th	Fr	Sa
						1	2
3	4	5	6	7	8	9	10
11	12	13	14	15	16	17	18
19	20	21	22	23	24	25	
26	27	28	29	30			

JULY

	Su	Mo	Tu	We	Th	Fr	Sa
						1	2
3	4	5	6	7	8	9	
10	11	12	13	14	15	16	
17	18	19	20	21	22	23	
24	25	26	27	28	29	30	
31	31						

AUGUST

	Su	Mo	Tu	We	Th	Fr	Sa
	1	2	3	4	5	6	
7	8	9	10	11	12	13	
14	15	16	17	18	19	20	
21	22	23	24	25	26	27	
28	29	30	31				

SEPTEMBER

	Su	Mo	Tu	We	Th	Fr	Sa
						1	2
3	4	5	6	7	8	9	10
11	12	13	14	15	16	17	
18	19	20	21	22	23	24	
25	26	27	28	29	30		

OCTOBER

	Su	Mo	Tu	We	Th	Fr	Sa
						1	
2	3	4	5	6	7	8	
9	10	11	12	13	14	15	
16	17	18	19	20	21	22	
23	24	25	26	27	28	29	
30	31						

NOVEMBER

	Su	Mo	Tu	We	Th	Fr	Sa
						1	2
3	4	5	6	7	8	9	10
11	12	13	14	15	16	17	18
19	20	21	22	23	24	25	26
27	28	29	30				

DECEMBER

	Su	Mo	Tu	We	Th	Fr	Sa
						1	2
3	4	5	6	7	8	9	10
11	12	13	14	15	16	17	
18	19	20	21	22	23	24	
25	26	27	28	29	30	31	

SB

strainblog.com

Also follow us at:



@strainblog



www.linkedin.com/in/strainblog



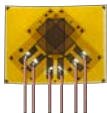
youtube.strainblog.com

SUPER STOCK STRAIN GAGES – 5 PER PACK

Linear Gages

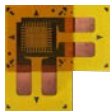


EA-06-015DJ-120	CEA-13-125UN-350	CEA-00-250UW-350
CEA-06-062UW-350	CEA-06-125UW-350	CEA-06-250UW-350
CEA-13-062UW-350	EA-06-250BG-120/LE	CEA-13-250UW-350
CEA-06-062UW-350/P2	CEA-00-250UN-350	CEA-06-250UW-120
CEA-06-125UN-350	CEA-06-250UN-350	CEA-06-500UW-350



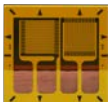
Stacked Rosettes

CEA-06-062WT-350
CEA-13-062WT-350
WA-06-120WR-350/W



Rect. Rosettes

CEA-06-062UR-350
CEA-13-062UR-350
CEA-06-125UR-350
CEA-13-125UR-350
CEA-06-250UR-350



Tee Rosettes

CEA-06-062UT-350
CEA-06-125UT-120
CEA-06-125UT-350
SK-06-250TM-350
CEA-06-250UT-350



Dual Shear

EA-06-062TV-350
CEA-06-062UV-350
CEA-06-187UV-350



Residual Stress

CEA-06-062UL-120



Full Bridge

CEA-06-250US-350



Weldable Gages

LWK-06-W250B-350

GAGE DESIGNATION SYSTEM



STC should match the coefficient of thermal expansion of the specimen (in ppm/°F) when test temperatures will vary.