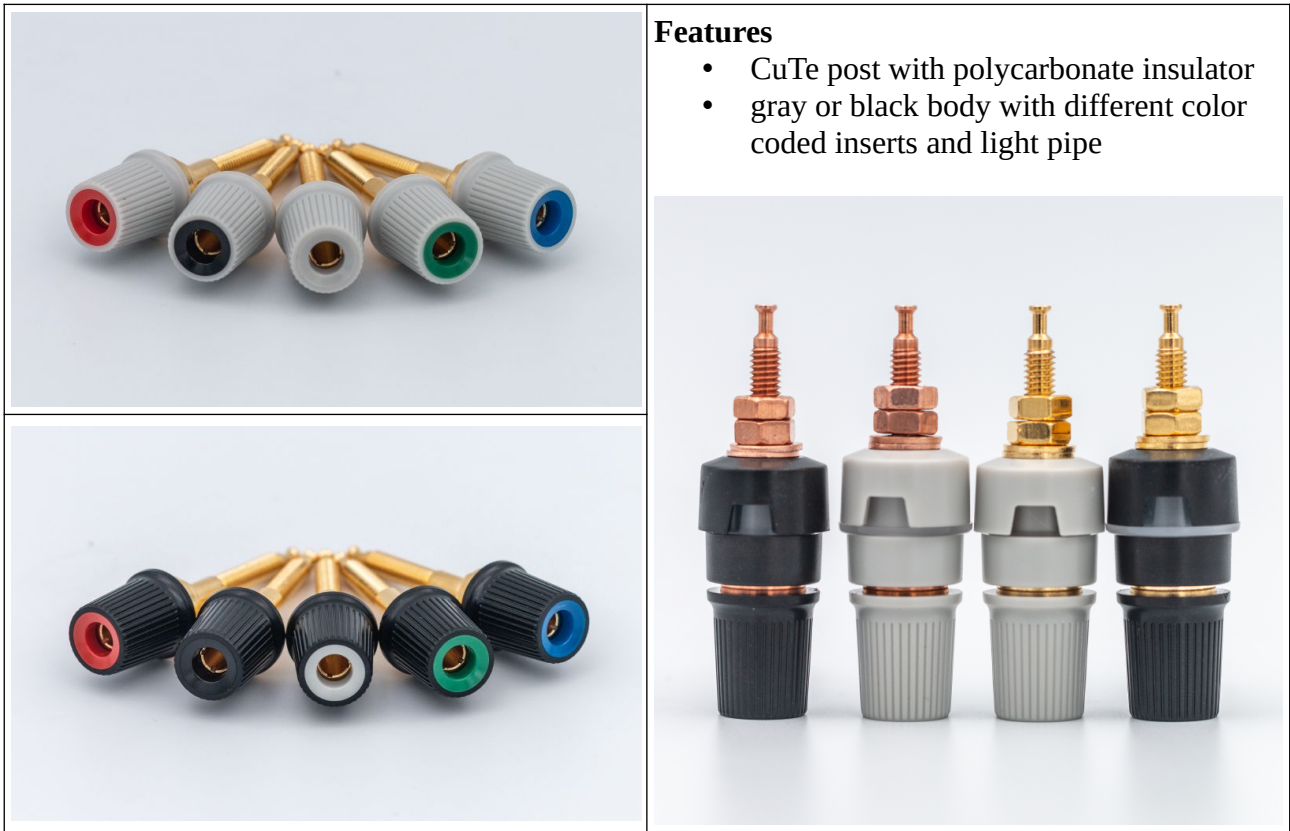


# Low Thermal E.M.F. Binding Post TBP3



**Features**

- CuTe post with polycarbonate insulator
- gray or black body with different color coded inserts and light pipe

**Description**

The TBP3 is a 5-way low thermal e.m.f. binding post with D tube and/or light pipe for LED backlight applications. The binding posts are available in gray or black with different color coded inserts. The post is made of tellurium copper, the lock washers and nuts of copper, all with optional nickel/gold plating. The plastic parts are manufactured in low leakage polycarbonate, making them ideal for high-insulation applications, standards and precision test equipment.

**Models and ordering information**

Standard colors are black or gray bodies with black, white, red, blue, or green colored coded inserts. All binding post come with both D tube and light pipe.

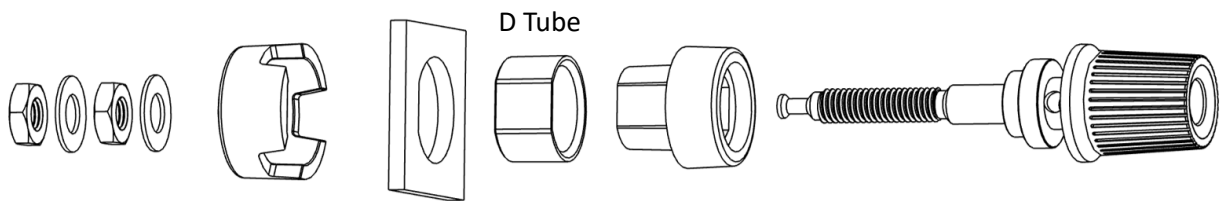
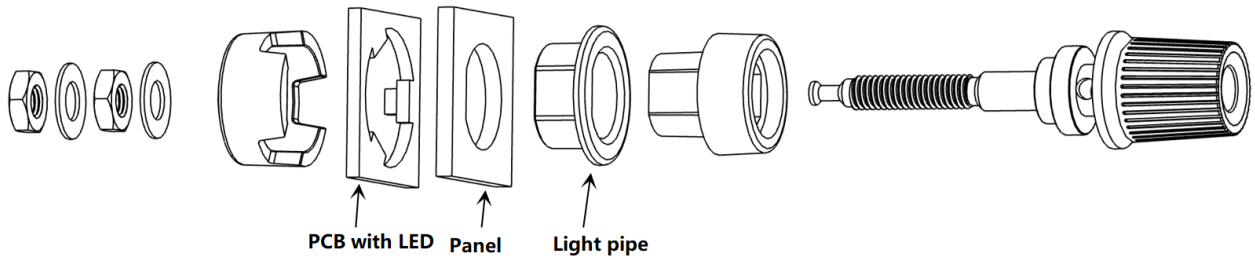
## TBP3-A-B-XX

<b>A</b>
0 - CuTe
1 - CuTe with Ni/Au plating

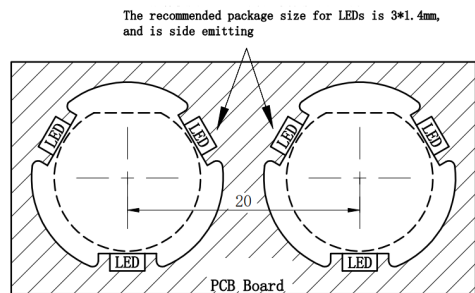
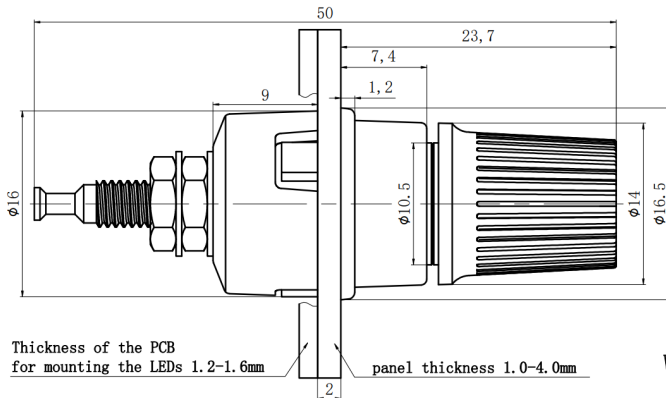
<b>B</b>
0 - Black insulation
1 - Gray insulation

<b>XX</b>
00 - Black insert
01 - White insert
02 - Red insert
03 - Blue insert
04 - Green insert

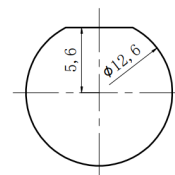
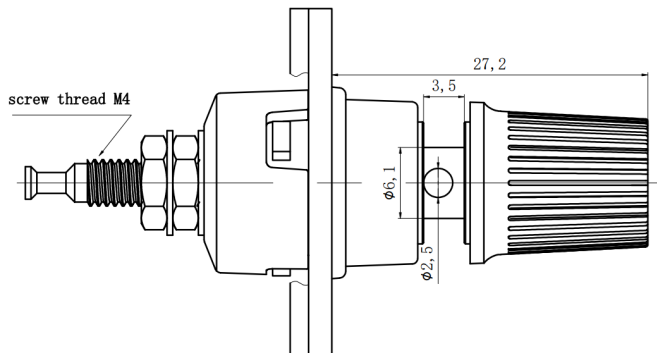
## Dimensions and mounting information



Insulated Cative Thumb Nut: CuTe  
 Insulation: Polycarbonate  
 Mounting Base: Polycarbonate  
 Insulator: Polycarbonate  
 Lock washer: Cu  
 Hex Nut: M4, Cu  
 Binding Post: CuTe



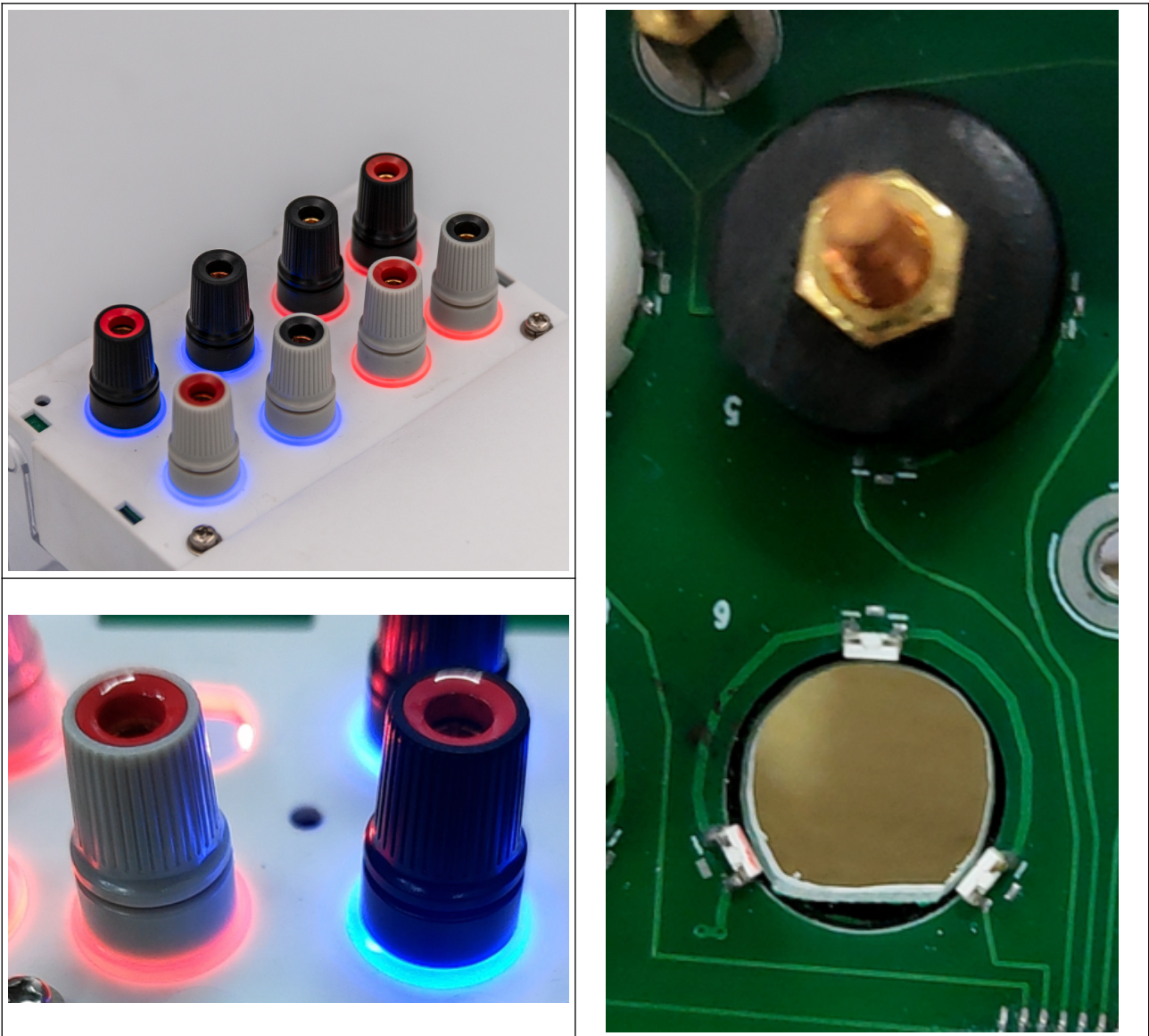
With LED lights, minimum intermediate spacing is 20mm



Panel cutout diagram

### Example of using LED backlight

The binding posts can be used with LED backlight. Therefore, three side LED's are arranged in 120° angle to enlight the light pipe.



### Accessories

Additional accessories made of T2 copper, that are compatible with TBP3 binding posts, are available on request.

Description	Part number
Low thermal e.m.f. fork terminal/spade lug	Spade lug 12-14 T2 Copper
Low thermal e.m.f. fork terminal/spade lug	Spade lug 22-16 T2 Copper
Low thermal e.m.f. ring terminal	O ring tongue 16-22 T2 Copper
Low thermal e.m.f. hex nut	#8-32 T2 Copper Hex Nuts