

2A SOURCE/SINK TERMINATION REGULATOR**PRELIMINARY DATA SHEET****DESCRIPTION**

NX1720 is a 2A source and sink Low Dropout Regulator designed for DDRI and DDRII termination application. Current limit circuitry in both sink and source side plus internal thermal shutdown protects the device under short circuit condition. NX1720 can be disabled by pulling down the Reference Pin below 0.2V using external small signal transistor or a MOSFET.

The NX1720 can also be used as an adjustable output voltage regulator using an external reference.

NX1720 is available in power SOIC8 package as well as TO-252 package for better thermal capability.

FEATURES

- Support DDR I (1.25V VTT) and DDRII (0.9V VTT)
- 2A Source and Sink current capability
- Shut down by pulling RefEN pin low
- Current Limit
- Thermal Shut down
- SOIC8 and TO-252 package

APPLICATIONS

- DDR Memory Termination Supply
- Desktop Motherboard or Notebook applications
- Graphic Card
- Set Top Box
- Active Terminal Bus Termination

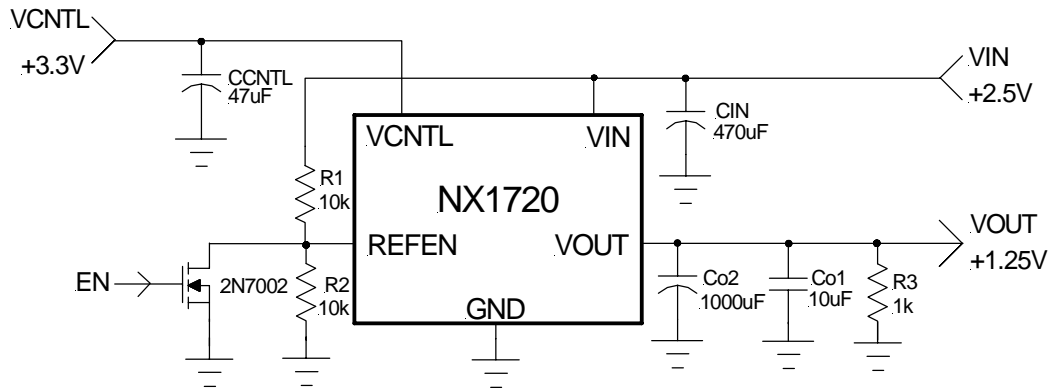
TYPICAL APPLICATION

Figure1 - Typical application of 1720

ORDERING INFORMATION

Device	Temperature	Package
NX1720CSTR	0 to 70°C	SOIC-8L
NX1720CDTR	0 to 70°C	TO-252-5L