

# AlaVar generated report

D:\\_\_\_\_\fx4\_test\_nplc100.csv

File 'D:\\_\_\_\_\fx4\_test\_nplc100.csv' created on 1/19/2018 11:52:38 AM

Column # 2 was processed

Data length N = 2048 points.

The mean Value of the processed data = 10.0001

The Stanadrd Deviation of the processed data = 6.55916e-07

The number of removed outliers is 11

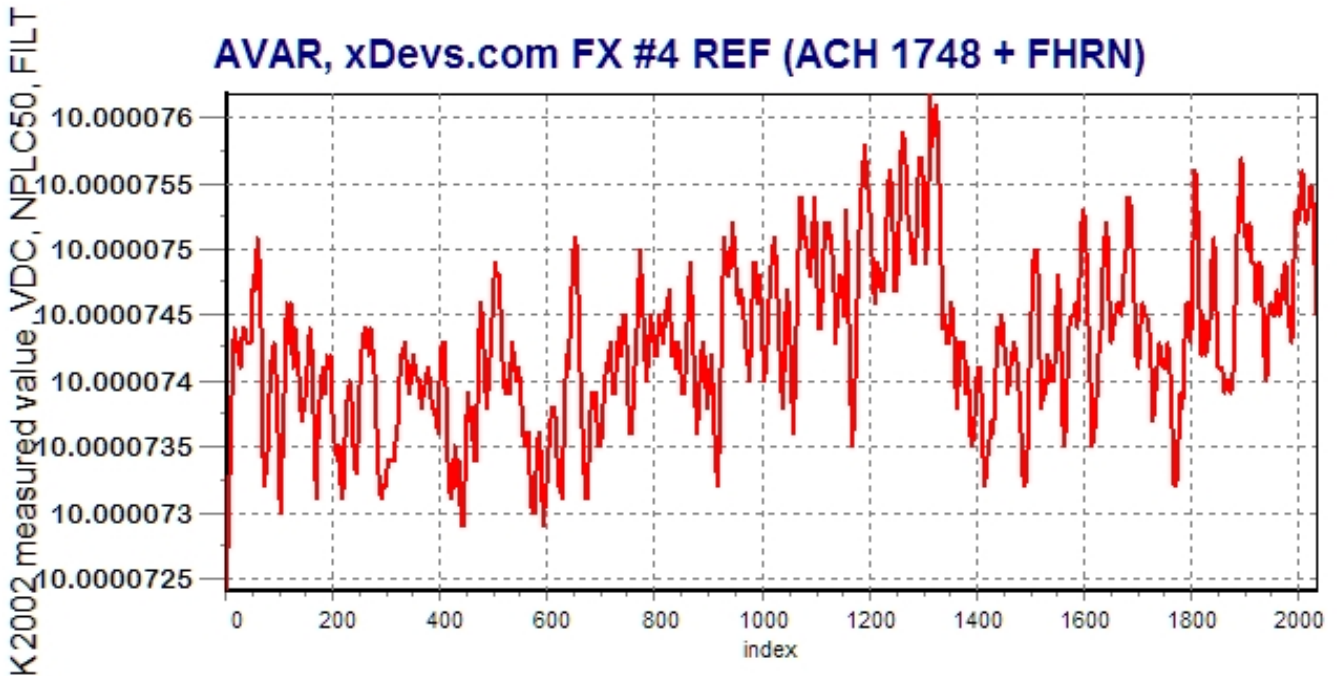


Figure 1 : Processed Data

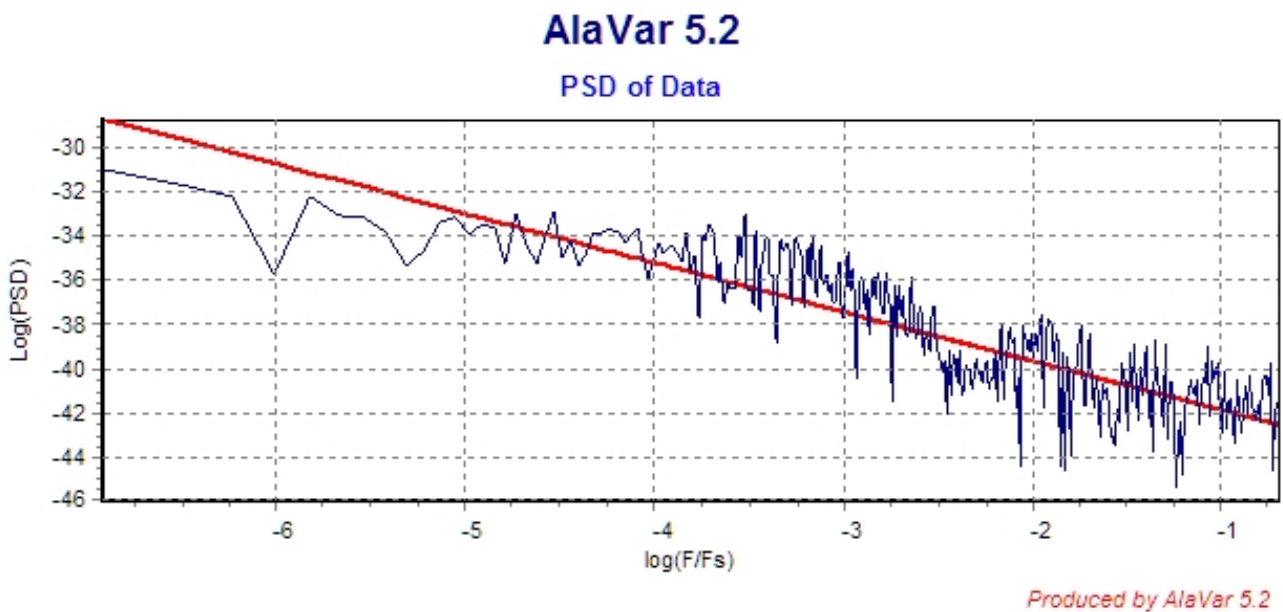


Figure 2 : Data PSD

The computation of the 3 ALLAN STD DEVs lasted 0.021000 seconds  
 The error bars were computed for a : Flicker FM  
 The computation of the Error bars lasted 0 seconds

ADEV(tau) was fitted to a line :  
 The Slope of the line is =0.1778  
 The fit result is ADEV(tau=1) = Stability =1.23677e-08

Tau = average Time  
 ADEV = Overlapping ALLAN STD DEV.  
 ADEV\_Min = ADEV lower bound.  
 ADEV\_Max = ADEV upper bound.  
 MDEV = Modified ALLAN STD DEV.  
 TDEV = Time ALLAN STD DEV.  
 HDEV = Overlapping HADAMARD STD DEV.

Tau	ADEV	ADEV_Min	ADEV_Max	MDEV	TDEV	HDEV
2	8.8356e-09	8.5725e-09	9.1156e-09	8.8356e-09	1.0203e-08	6.1239e-08
4	1.2993e-08	1.2452e-08	1.3583e-08	1.235e-08	2.8521e-08	7.6028e-08
8	2.0916e-08	1.9704e-08	2.2288e-08	1.9697e-08	9.0977e-08	1.2624e-07
16	3.1551e-08	2.9021e-08	3.4569e-08	2.7681e-08	2.557e-07	2.6314e-07
32	3.4398e-08	3.0605e-08	3.9273e-08	2.7766e-08	5.1298e-07	3.2498e-07
64	3.1042e-08	2.6372e-08	3.7738e-08	2.4976e-08	9.2286e-07	2.8765e-07
128	2.8436e-08	2.2646e-08	3.8228e-08	2.2725e-08	1.6794e-06	2.7021e-07
256	2.7022e-08	1.9627e-08	4.3354e-08	2.2313e-08	3.2979e-06	2.4758e-07
512	2.7902e-08	1.7694e-08	6.477e-08	2.5211e-08	7.4526e-06	2.6053e-07
1024	3.5558e-08	1.8488e-08	2.2582e-07	3.1781e-08	1.8789e-05	3.3968e-07

xDevs.com FX #4 proto (K2002, LTZ1000ACH 1748, FHRN #1), 10V output  
Allan STD DEV

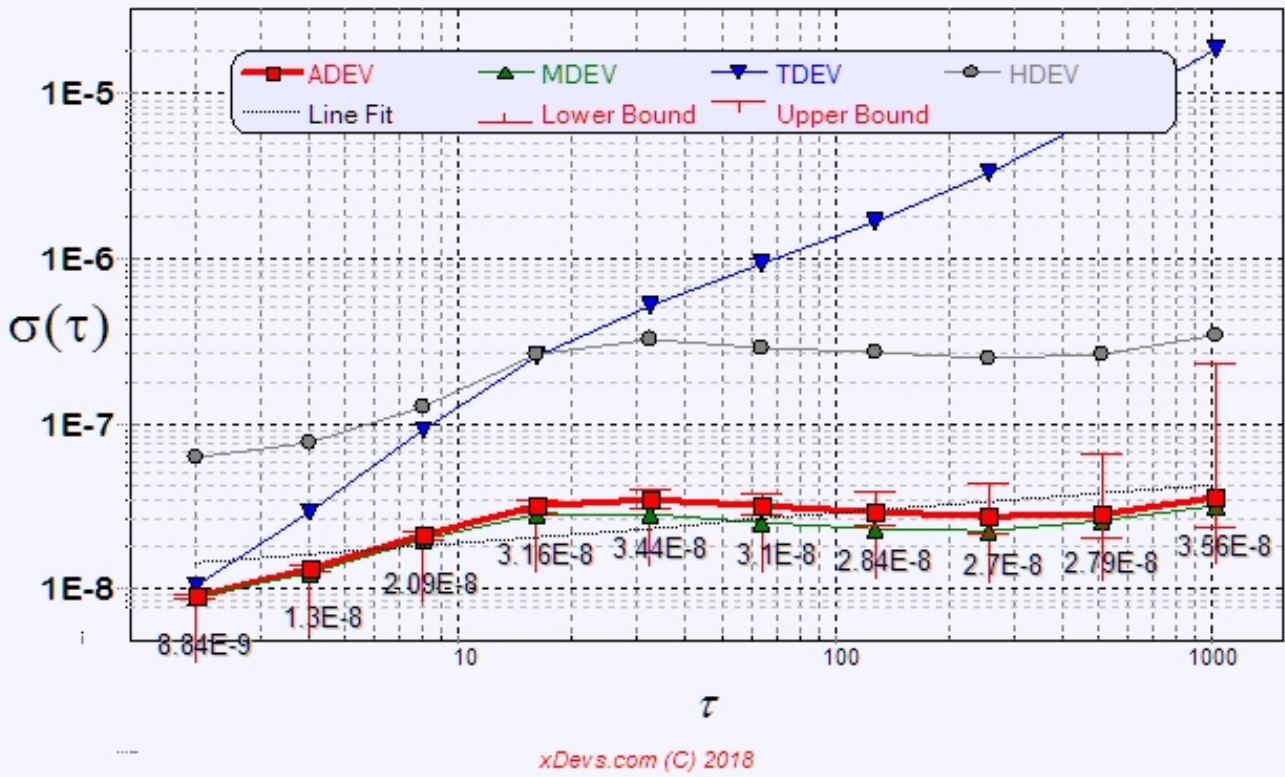


Figure 3 : Allan Standard Deviation